

# LAND PARTITION

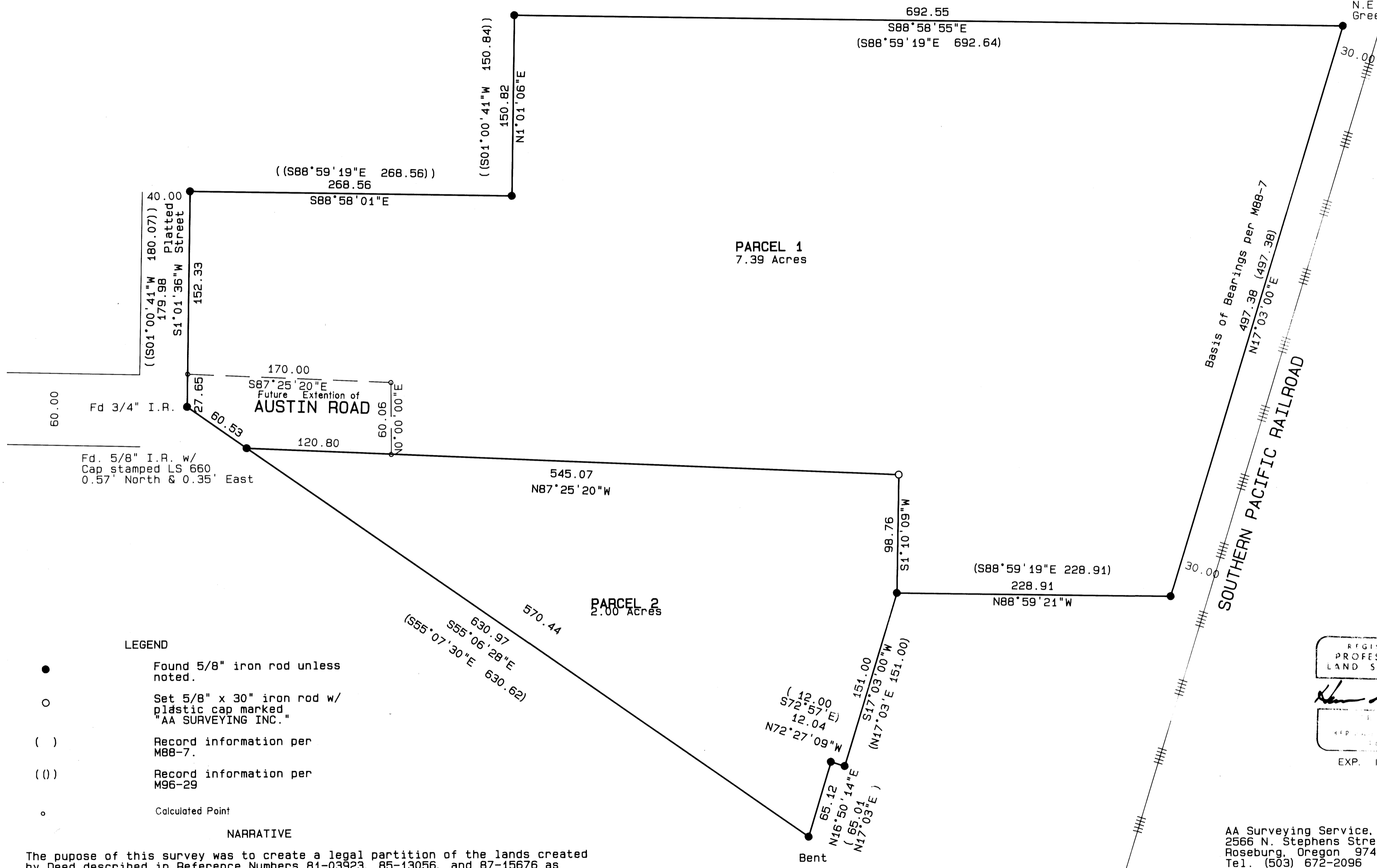
IN THE S 1/2 SECTION 2 AND N 1/2, SECTION 11  
TOWNSHIP 28 SOUTH, RANGE 6 WEST, W.M.  
24 AUG 1993 SCALE: 1 inch : 60.0 feet

FILED *JP*

AUG 26 1993 *JP*

COUNTY SURVEYOR  
DOUGLAS COUNTY, OREGON  
*JP*

N.E. Corner, Lot 20  
Green Valley Orchard Tracts



REGISTERED  
PROFESSIONAL  
LAND SURVEYOR

*Ken A. Puse*

EXP. 12/31/94

AA Surveying Service, Inc.  
2566 N. Stephens Street  
Roseburg, Oregon 97470  
Tel. (503) 672-2096

**COUNTY SURVEYORS FILE DATA  
DO NOT REMOVE FROM OFFICE**



1993 - 0057 A

1993 - 0057 A