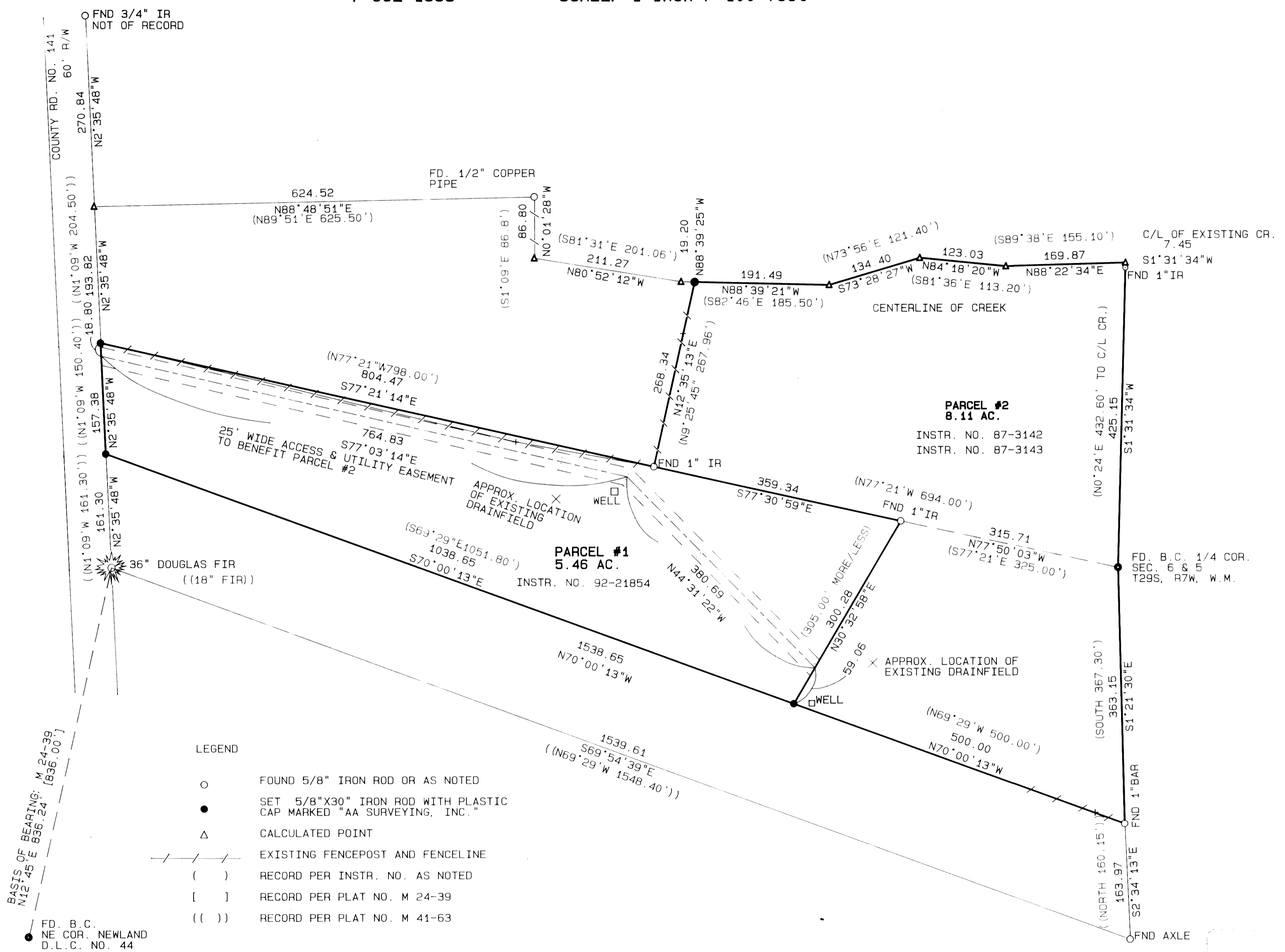


1993 - 0051 B

1993 - 0051 B

LAND PARTITION  
 LOCATED IN THE NE & SE 1/4 OF SECTION 6,  
 TOWNSHIP 29 SOUTH, RANGE 7 WEST, W.M.  
 7 JUL 1993 SCALE: 1 inch : 100 feet

FILED 88  
 AUG 10 1993 JC  
 COUNTY SURVEYOR  
 DOUGLAS COUNTY, ORE  
 JC



BASIS OF BEARING:  
 N12°45'E 836.24'  
 M 24-39 [836.00']

FD. B.C.  
 NE COR. NEWLAND  
 D.L.C. NO. 44

- LEGEND
- FOUND 5/8" IRON ROD OR AS NOTED
  - SET 5/8"X30" IRON ROD WITH PLASTIC CAP MARKED "AA SURVEYING, INC."
  - △ CALCULATED POINT
  - EXISTING FENCEPOST AND FENCELINE
  - ( ) RECORD PER INSTR. NO. AS NOTED
  - [ ] RECORD PER PLAT NO. M 24-39
  - (( )) RECORD PER PLAT NO. M 41-63

COUNTY SURVEYORS FILE DATA  
 DO NOT REMOVE FROM OFFICE

*Mark R. Steinberger*

