

MINOR LAND PARTITION
OF LOT 15, WECKS TRACT

IN SW 1/4 OF SECTION 33
TOWNSHIP 29 SOUTH, RANGE 5 WEST. W.M.

FILED 56
AUG 30 1993 JP
COUNTY SURVEYOR
DOUGLAS COUNTY, ORE
JC

SURVEYOR'S CERTIFICATE

I, WILLIAM J. RUPPERT CERTIFY THAT I SURVEYED AND MARKED WITH PROPER MONUMENTS THE LAND SHOWN ON THE ACCOMPANYING PLAT, AND DESCRIBED AS FOLLOWS:

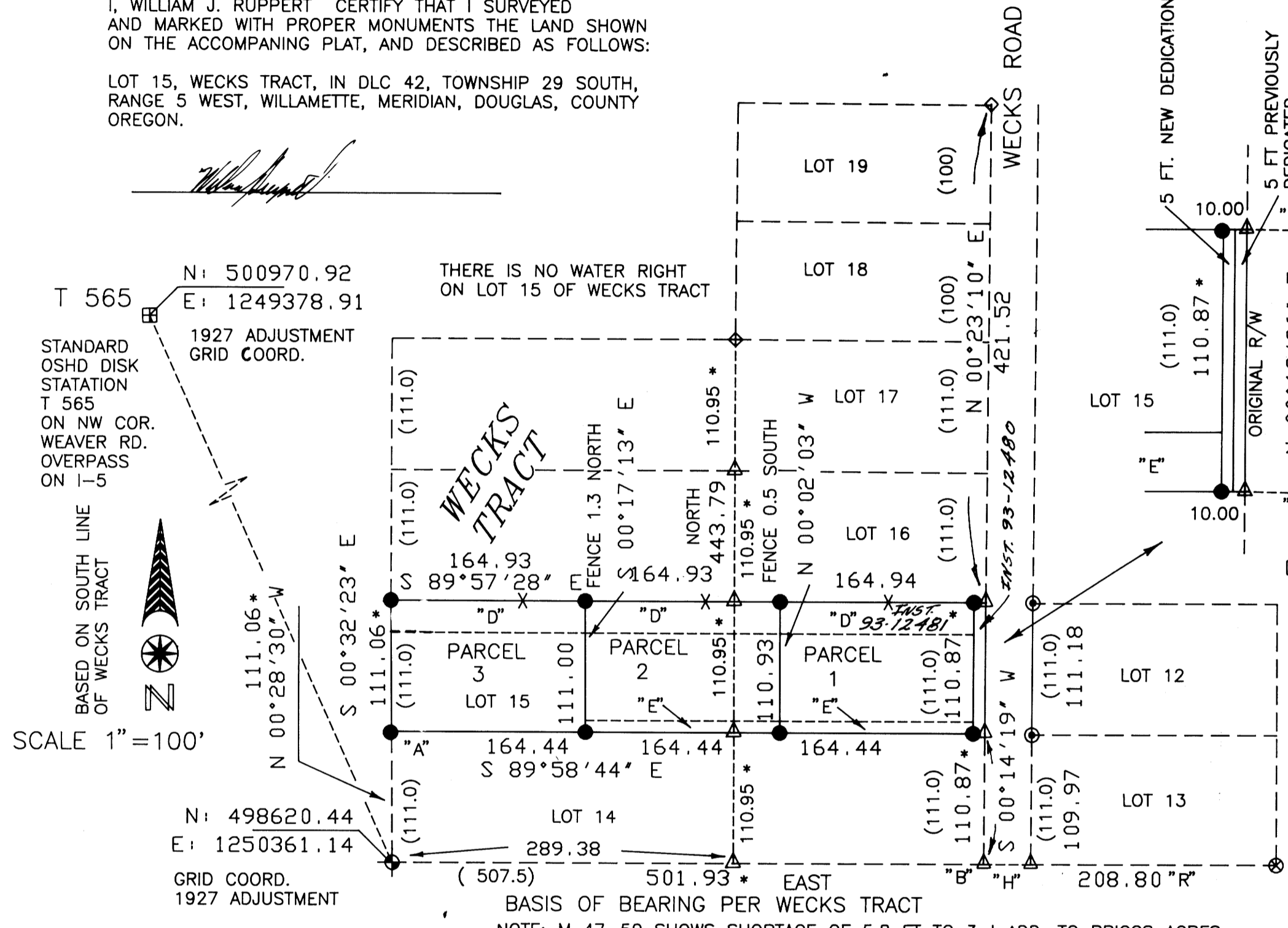
LOT 15, WECKS TRACT, IN DLC 42, TOWNSHIP 29 SOUTH, RANGE 5 WEST, WILLAMETTE, MERIDIAN, DOUGLAS, COUNTY OREGON.

STATE OF OREGON) SS
COUNTY OF DOUGLAS)

ON THE 21 DAY OF May, 1993 BEFORE ME APPEARED
WILLIAM J. RUPPERT

WHO BEING DULY SWORN DID SAY THAT HE IS THE OWNER OF THE LAND SHOWN ON THE ANNEXED PLAT AND HE HAS CAUSED THE SAME TO BE SURVEYED AND PLATTED.

THIS INSTRUMENT WAS ACKNOWLEDGED BEFORE ME ON May 27, 1993
Dianne Johnson, NOTARY PUBLIC FOR OREGON, MY COMMISSION EXPIRES DEC 29, 1994



SURVEY NARRATIVE:

SURVEY PROCEDURE: THE ONLY ORIGINAL MONUMENTS I FOUND PER WECKS TRACT ARE THE SOUTHWEST CORNER AND THE SOUTHEAST CORNER OF THE SUBDIVISION. I SEARCHED FOR ORIGINAL MONUMENTS ALONG THE WEST LINE OF LOTS 14 TO 17. I HELD ONLY NON-RECORD MONUMENTS THAT BEST FIT RECORD DISTANCES OF WECKS TRACT.

THE SOUTH LINE OF WECKS TRACT WAS ESTABLISHED FROM THE S.W. CORNER OF DLC 42 TO THE S.E. CORNER OF THE SUBDIVISION.

FROM THE LOCATION OF WECKS ROAD PER MONUMENTS ON THE EAST SIDE OF THE ROAD AND POSSESSION LINES IN THE AREA, THE SHORTAGE ALONG THE SOUTH LINE OF WECKS TRACT WAS DETERMINED TO BE CONFINED TO THE LOTS WEST OF WECKS ROAD; THEREFORE I HELD RECORD DISTANCE ALONG THE SOUTH LINE OF WECKS TRACT FROM THE S. E. CORNER OF LOT 13 TO THE S. E. CORNER OF LOT 14.

NEXT, THE RATIO OF MEASURED DISTANCE TO RECORD DISTANCE WAS CALCULATED ALONG THE SOUTH LINE OF LOT 14 (501.93 MEASURED/ 507.5 RECORD). THIS RATIO WAS USED TO CALCULATE THE PROPORTIONED LENGTH OF THE NORTH AND SOUTH LINES OF LOT 15.

DISTANCES WERE PROPORTIONED FROM THE CALCULATED S. E. CORNER OF LOT 14 TO THE N.E. CORNER OF LOT 19 (663.26 MEASURED/ 664.0 RECORD), WHILE HOLDING THE RECORD DISTANCE OF 40 FEET FROM MONUMENTS ON THE EAST SIDE OF WECKS ROAD.

DISTANCES WERE PROPORTIONED ALONG THE LINE FROM THE S. W. CORNER OF LOT 18 TO THE SOUTH LINE OF WECKS TRACT (443.79 MEASURED/ 440.0 RECORD). THE DIRECTION OF THE NORTH AND SOUTH LINES OF LOT 15 WERE ESTABLISHED FROM THE PROPORTIONED EASTERLY CORNERS OF LOT 15 THROUGH PROPORTIONED POINTS ON THE LINE SOUTH FROM LOT 18.

INSTRUMENTS: LIETZ, T60D THEODOLITE, MAC II EDM, 100 FT. STEEL TAPE:

STATE OF OREGON) SS
COUNTY OF DOUGLAS)
I, GAY FIELDS, COUNTY CLERK AND REGISTER OF CONVEYANCES, DO HEREBY CERTIFY THAT THIS INSTRUMENT WAS RECORDED
93 JUL -1 AM 9:00
GAY FIELDS
DOUGLAS COUNTY CLERK
IN THE OFFICIAL RECORDS OF DOUGLAS COUNTY
DOUGLAS COUNTY, OREGON

PARTITIONER
MICHAEL MAZALEK
P.O. BOX 1969
MYRTLE CREEK, OR 97457
PLANNING DEPT FILE 91-155
ZONE: RS R1
COMP. PLAN DESIG.: RMD, RLD
WATER SUPPLY: TRI-CITY WATER DIST.
SEWAGE DISPOSAL: TRI-CITY SANITARY DIST.

SURVEYED BY: WILLIAM J. RUPPERT
P.O. BOX 1564
MYRTLE CREEK, OR 97457
MARCH 1993

MY REGISTRATION EXPIRES
DECEMBER 31, 1994



FILED THIS 15TH DAY OF JULY 1993 93-13481
BY GAY FIELDS, County Clerk DOUGLAS COUNTY CLERK

APPROVALS: Keith L. Cubie 6/24/93 PLANNING COMM. DATE
Janey E. Manner 6-30-93 COUNTY SURVEYOR DATE
DEPUTY

AREAS:
PARCEL 1, 0.419 AC.
PARCEL 2, 0.419 AC.
PARCEL 3, 0.420 AC.

- LEGEND
- SET 5/8"X30" IRON ROD WITH 3/4" BRASS WASHER MARKED LS 866
 - *-*- FENCE LINE
 - △ CALCULATED POINT
 - ⊕ FOUND SW CORNER DLC 42, STONE WITH 3/4" IRON PIPE 1.3 FT NORTHERLY
 - ⊙ FOUND 1.5" IRON PIPE
 - ⊗ FOUND 2" IRON PIPE
 - ◇ FOUND 3/4" IRON PIPE
 - * PROPORTIONED DISTANCE
 - "R" HELD RECORD DISTANCE
 - "H" HELD 40 FT. STREET WIDTH PER SUBDIVISION
 - () RECORD
 - "E" 10 FT. WIDE EASEMENT CREATED BY THIS PARTITION FOR UTILITIES
 - "A" FOUND 3/4" IRON PIPE S 49° 52' W 1.35
 - "B" FOUND 5/8" IRON ROD PER M 47-50 S 68° 10' W 1.40
 - "D" 27 FT. ACCESS AND UTILITY EASEMENT ALONG WITH IRREVOCABLE OFFER TO DEDICATE

1993 - 0040

1993 - 0040

COUNTY SURVEYORS FILE DATA
DO NOT REMOVE FROM OFFICE