

FINAL PARTITION PLAT FOR

ELK RIVER ENTERPRISES, INC.

FILE NO. 90-298

MAP NO. 22 5 18 & INDEX, TAX LOT 200
MAP NO. 22 5 18B, TAX LOT 1200
MAP NO. 22 5 18C, TAX LOT 900

NW 1/4 & SW 1/4 SEC. 18, T22S, R5W, WM.
WITHIN THE "THOMAS STILLWELL DLC. NO. 39"

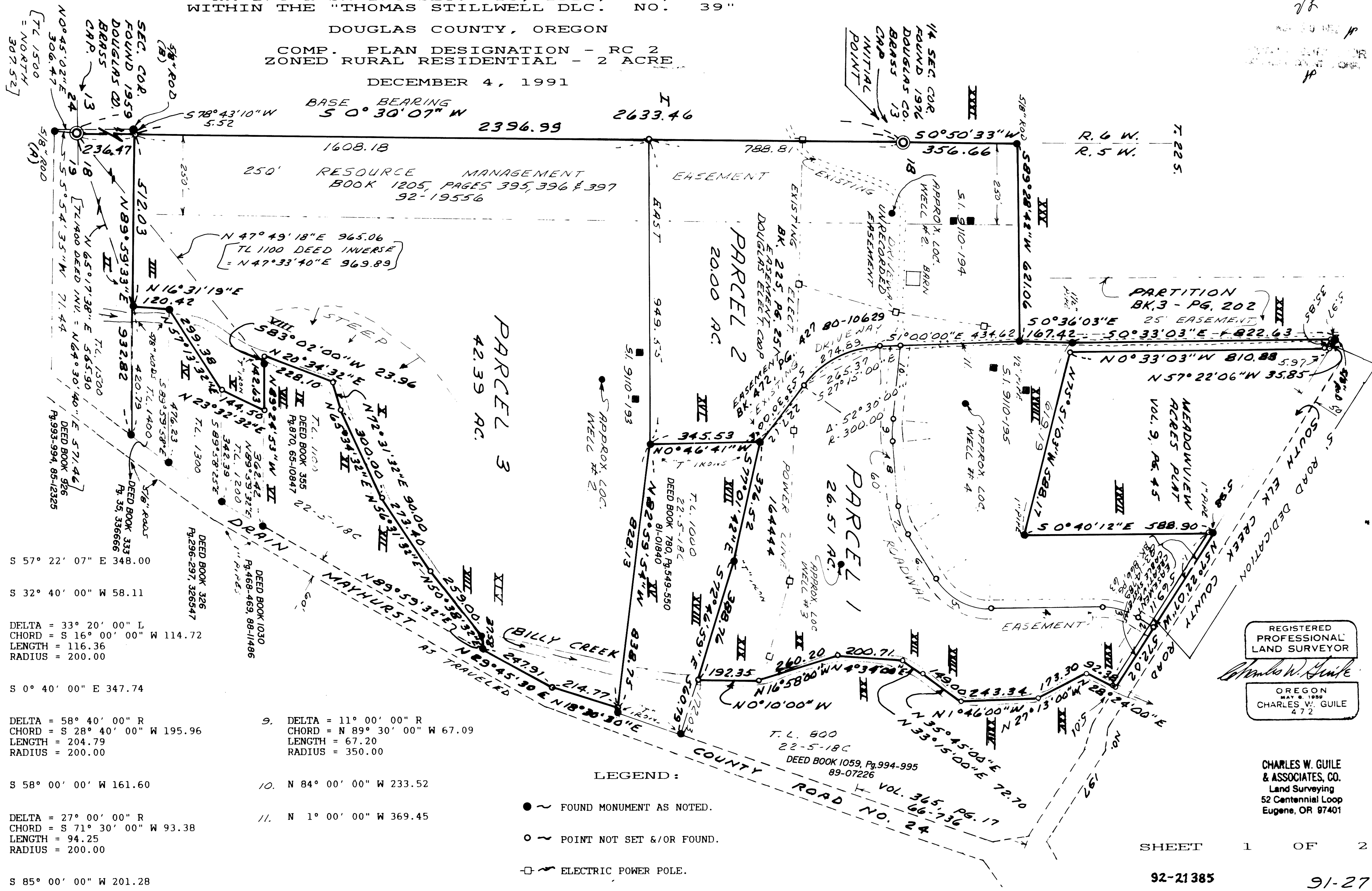
DOUGLAS COUNTY, OREGON

COMP. PLAN DESIGNATION - RC 2
ZONED RURAL RESIDENTIAL - 2 ACRE

DECEMBER 4, 1991

BASE BEARING
5° 0' 30" 07" W

SCALE
1" = 200'
BEARINGS
BASED ON
A SOLAR
OBSERVATION



- S 57° 22' 07" E 348.00
- S 32° 40' 00" W 58.11
- DELTA = 33° 20' 00" L
CHORD = S 16° 00' 00" W 114.72
LENGTH = 116.36
RADIUS = 200.00
- S 0° 40' 00" E 347.74
- DELTA = 58° 40' 00" R
CHORD = S 28° 40' 00" W 195.96
LENGTH = 204.79
RADIUS = 200.00
- S 58° 00' 00" W 161.60
- DELTA = 27° 00' 00" R
CHORD = S 71° 30' 00" W 93.38
LENGTH = 94.25
RADIUS = 200.00
- S 85° 00' 00" W 201.28
- DELTA = 11° 00' 00" R
CHORD = N 89° 30' 00" W 67.09
LENGTH = 67.20
RADIUS = 350.00
- N 84° 00' 00" W 233.52
- N 1° 00' 00" W 369.45

LEGEND :

- ~ FOUND MONUMENT AS NOTED.
- ~ POINT NOT SET &/OR FOUND.
- ~ ELECTRIC POWER POLE.

REGISTERED PROFESSIONAL LAND SURVEYOR

Charles W. Guile

OREGON
MAY 6, 1999
CHARLES W. GUILLE
472

CHARLES W. GUILLE & ASSOCIATES, CO.
Land Surveying
52 Centennial Loop
Eugene, OR 97401

SHEET 1 OF 2

92-21385 91-27