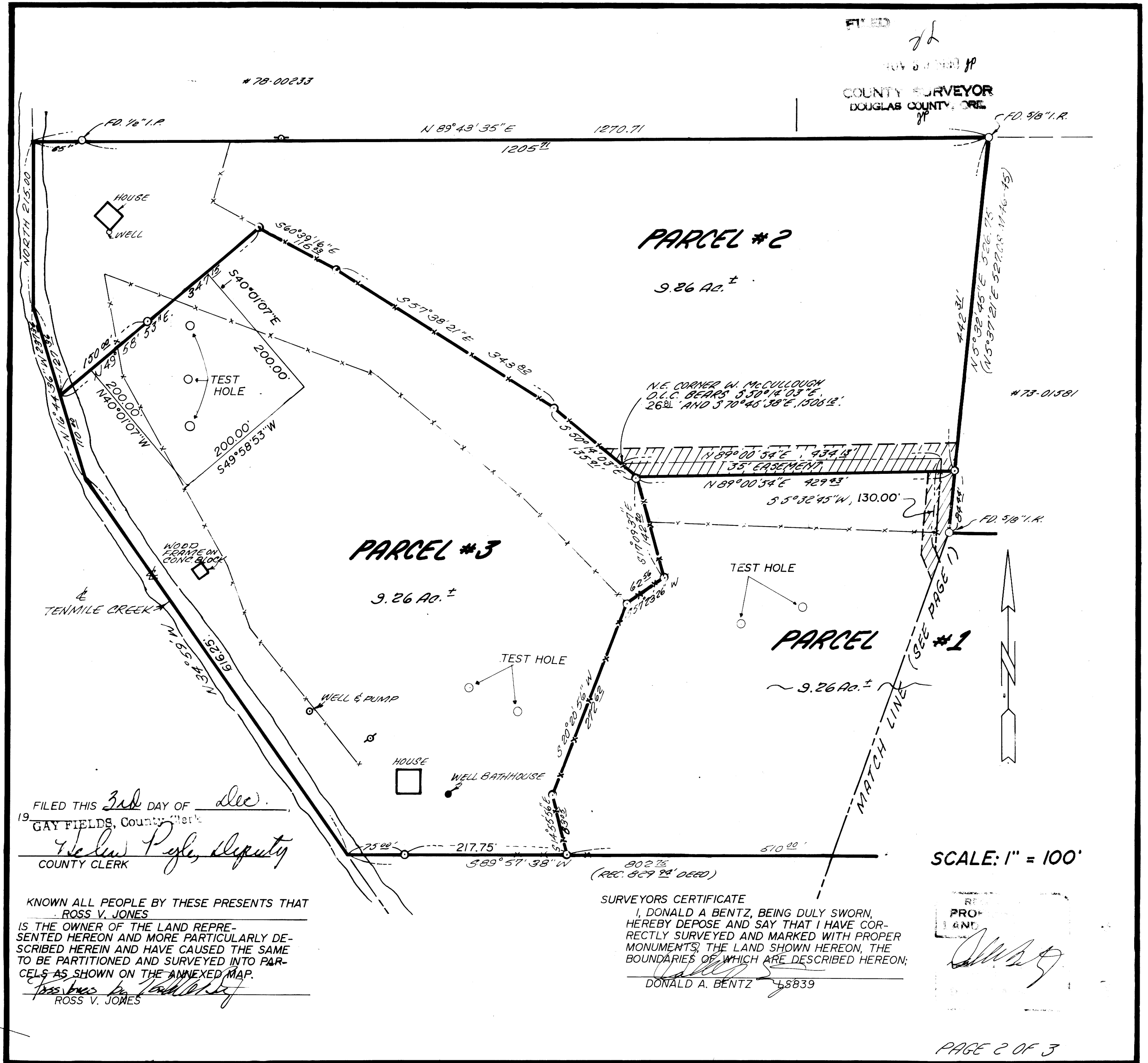


COUNTY SURVEYORS FILE DATA
DO NOT REMOVE FROM OFFICE

FILED

COUNTY SURVEYOR
DOUGLAS COUNTY, ORE.



FILED THIS 3rd DAY OF Dec.
19 1990 GAY FIELDS, County Clerk
Helen Peyle, Deputy
COUNTY CLERK

KNOWN ALL PEOPLE BY THESE PRESENTS THAT
ROSS V. JONES
IS THE OWNER OF THE LAND REPRESENTED HEREON AND MORE PARTICULARLY DESCRIBED HEREIN AND HAVE CAUSED THE SAME TO BE PARTITIONED AND SURVEYED INTO PARCELS AS SHOWN ON THE ANNEXED MAP.
Ross V. Jones
ROSS V. JONES

SURVEYORS CERTIFICATE
I, DONALD A. BENTZ, BEING DULY SWORN, HEREBY DEPOSE AND SAY THAT I HAVE CORRECTLY SURVEYED AND MARKED WITH PROPER MONUMENTS THE LAND SHOWN HEREON, THE BOUNDARIES OF WHICH ARE DESCRIBED HEREON:
DONALD A. BENTZ 68839

SCALE: 1" = 100'

PRO-
ANT
[Signature]

PAGE 2 OF 3

90-113

1990-0073 B

1990-0073 B

1990-0073 B