

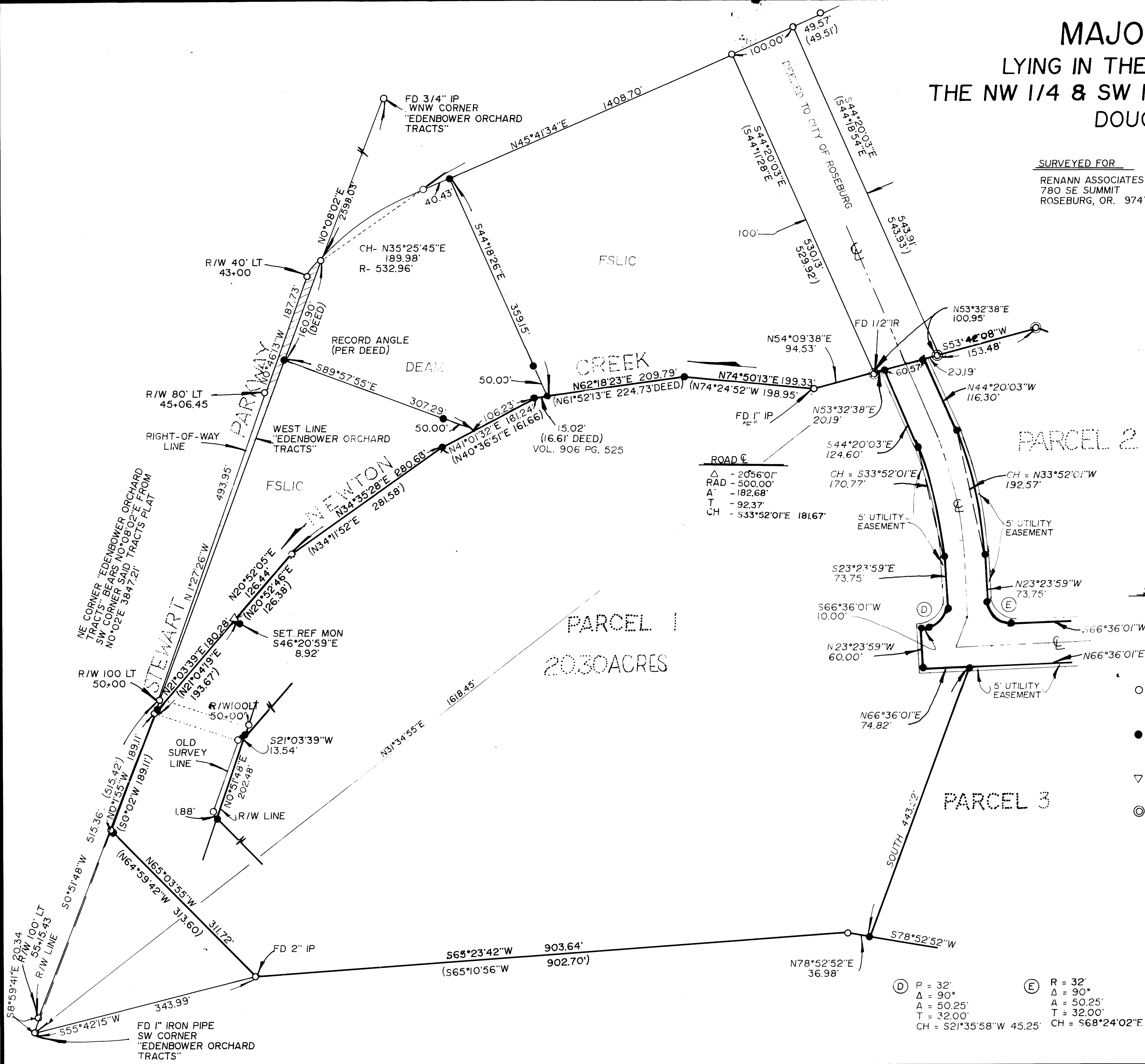
1990-0023B

MAJOR LAND PARTITION LYING IN THE NE 1/4 & SE 1/4 OF SEC. 11 & THE NW 1/4 & SW 1/4 OF SEC. 12, T27S, R6W, W.M. DOUGLAS COUNTY, OREGON

SURVEYED FOR
RENANN ASSOCIATES
780 SE SUMMIT
ROSEBURG, OR. 97470

SURVEYED BY
DONALD A. BENTZ INC.
1205 SE COURT
ROSEBURG, OR 97470
(503) 673-0166

FILED
JUN 1990 TF



ROAD C

Δ	-20°56'01"
RAD	-500.00'
A	-182.68'
T	-92.37'
CH	-533°52'01"E 181.67'

SCALE 1" = 100'
FEB 1990

- LEGEND
- FOUND 5/8" IR UNLESS OTHERWISE NOTED
 - SET 5/8" x 30" IRON ROD WITH PLASTIC CAP MARKED "BENTZ SUR. INC"
 - ▽ COMPUTED POINT
 - ⊙ FD. 3/4" I.P. OVER 5/8" IR.

REGISTERED PROFESSIONAL LAND SURVEYOR

DONALD A. BENTZ
839

Ⓧ	P = 32'	Ⓧ	R = 32'
	Δ = 90°		Δ = 90°
	A = 50.25'		A = 50.25'
	T = 32.00'		T = 32.00'
	CH = S21°35'58"W 45.25'		CH = S68°24'02"E 45.25'

COUNTY SURVEYORS FILE DATA
DO NOT REMOVE FROM OFFICE

1990-0023B