

# COUNTY SURVEYOR'S RECORD, DOUGLAS COUNTY, OREGON

BUSHONG & CO. PORTLAND, ORE. 87545

<p><i>Survey No.</i>                      <i>Made on</i>    August 13, 1948</p> <p><i>In Town.</i>    27 S    <i>Range</i>    5 W        <i>Sec.</i>    18</p> <p><i>Made for</i> - H. K. Gardiner</p> <p><i>Purpose of</i> to cut off South 60 ft. of Lots 1 &amp; 2, Block 28, Kinney's Improved Plat, Roseburg, Oreg.</p> <p style="text-align: center;"><i>Drawer 39    File 189</i></p>	<p><i>Survey No.</i>                      <i>Made on</i></p> <p><i>In Town.</i>                      <i>Range</i>                      <i>Sec.</i></p> <p><i>Made for</i></p> <p><i>Purpose of</i></p>
--	--

(See Attached Map)

Centerlines of East First Ave. North and East Second Street were established from the standard street monuments shown on the map. The North and East boundaries of Block 28 established by offsetting 30 ft. ( $\frac{1}{2}$  the street width) from these centerlines.

The South boundary of Lots 1 and 2, Block 28, was established by proportional distance on East Second St. from the centerlines of East First Ave. North and Commercial Ave. after deducting width of streets and alley.

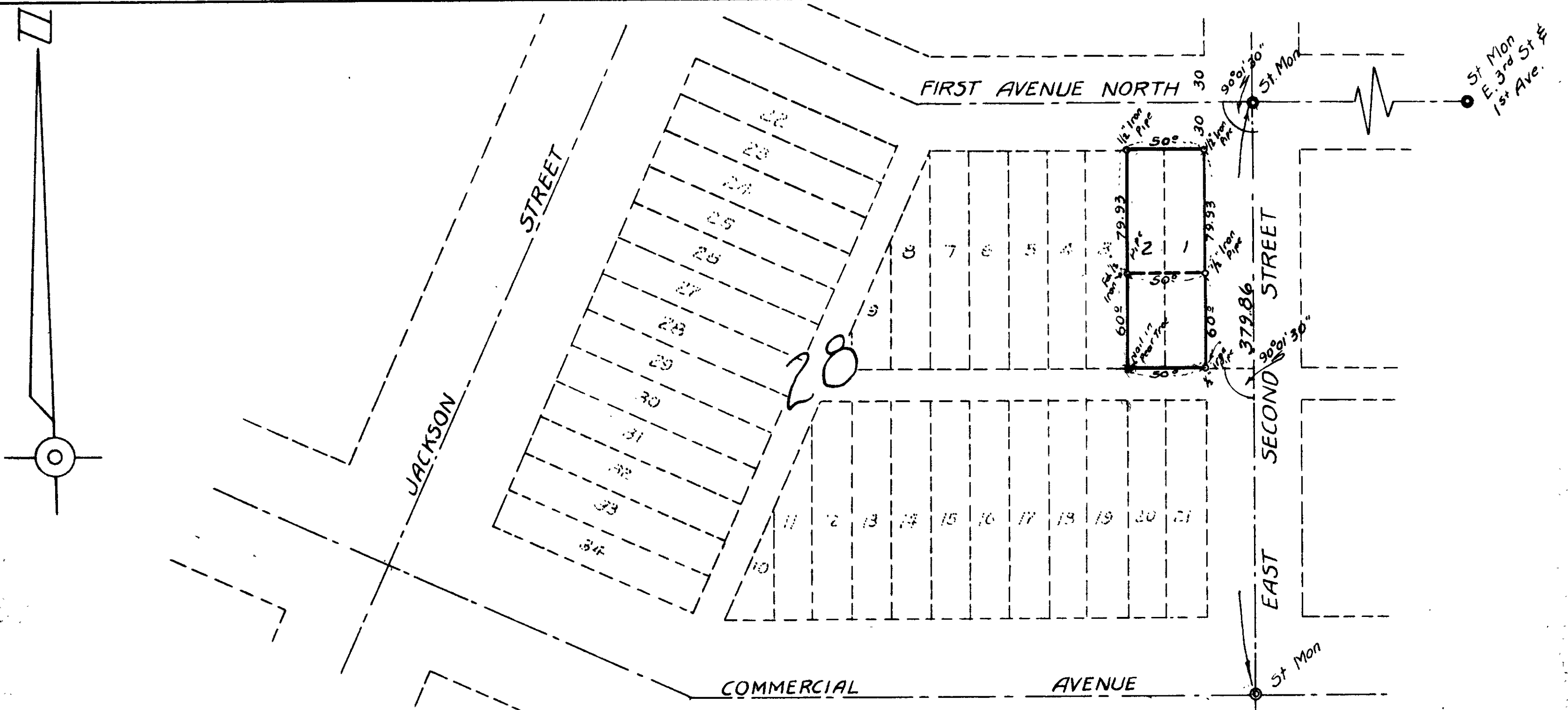
Owing to insufficiency of controls to establish the angle in East First Ave. North the West boundary of Lot 2 was established at the record distance from the East boundary of Lot 1.

All corners were monumented and all angles and distances are indicated on the map.

Descriptions of the two parcels are in the file.

*N. E. Richardson*

N. E. Richardson  
Deputy County Surveyor



COUNTY SURVEYOR'S OFFICE  
DOUGLAS COUNTY OREGON

SURVEY OF LOTS 1 & 2, BLOCK 28  
KINNEY'S IMPROVED PLAT  
ROSEBURG OREGON

BEN. B. IRVING COUNTY SURVEYOR  
SURVEYED AUGUST 13 1948 BY  
N.E. RICHARDSON DEPUTY

SCALE 1" = 60'

OREGON  
LAND SURVEY  
N.E. Richardson  
JULY 7 1944  
N. E. RICHARDSON  
35

TRACING  
MAP  
C.S. 28/100