

# COUNTY SURVEYOR'S RECORD, DOUGLAS COUNTY, OREGON

BUENOS & CO. PORTLAND, ORE. 87545

CS 34/47 ACS 42/61

Survey No. Made on April 25, 1941

In Town. 27 S. Range 6 W. Sec. 13

Made for Mrs Susan R Alexander

Purpose of, to locate line between Lots 2 & 3, Block 12, Amended Map Jones Addition to Roseburg.

Legal Survey

Arthur Boyer & R. Ch. Arthur Alexander } helpers  
 "Doc." Gilliam H " Merl "

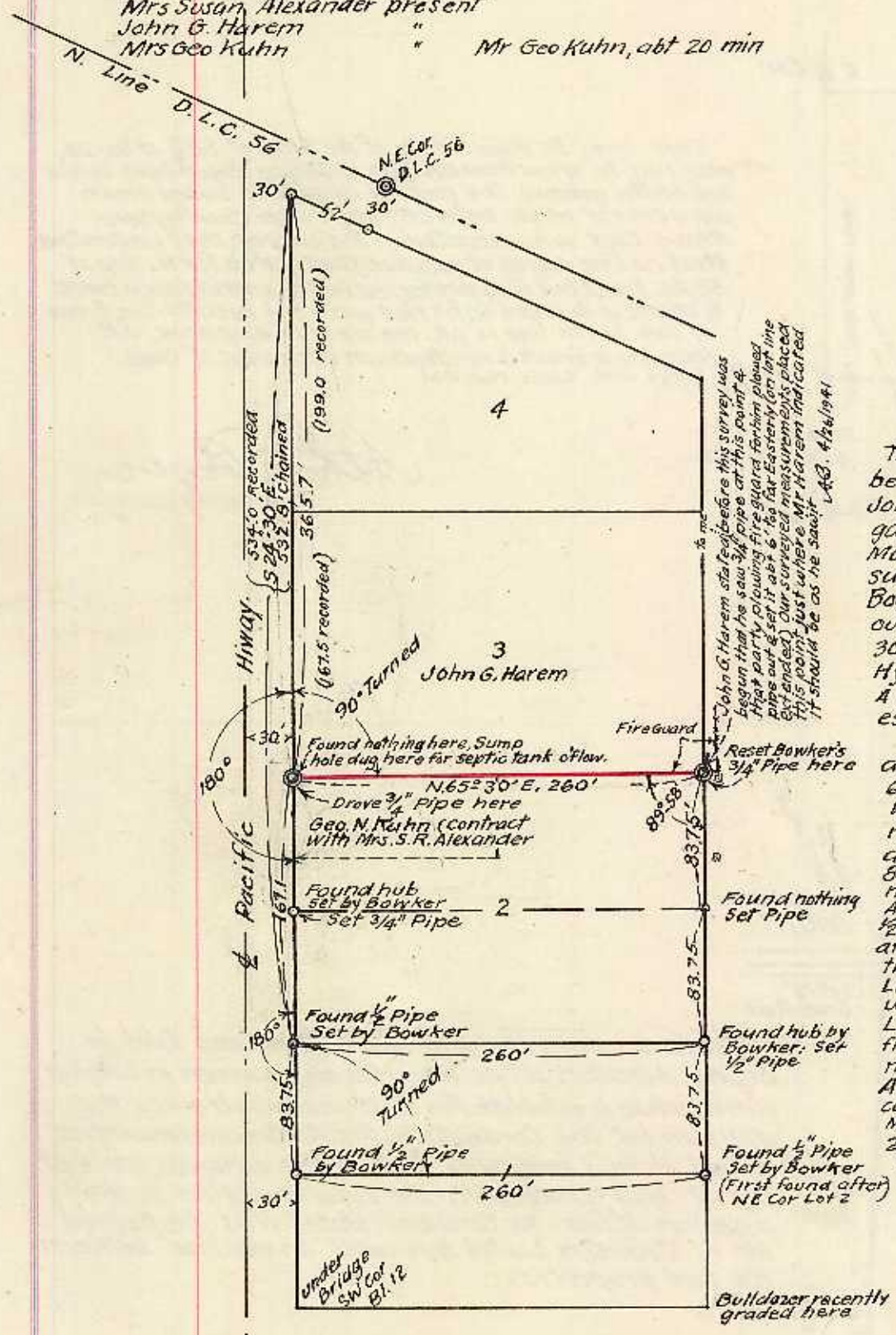
Survey No. Made on

In Town. Range Sec.

Made for

Purpose of

Mrs Susan Alexander present  
 John G. Harem "  
 Mrs Geo Kuhn " Mr Geo Kuhn, abt 20 min



This Survey was made to determine the Lot Line between Lots 2 & 3, Block 12, Amended Map Jones Add. Before starting survey an investigation was made of a previous survey, made by Morris Bowker, working under direction of county surveyor, & which is recorded in County Surveyor's Book No 3, Pg. 264. The N. line D.L.C. 56 was run out & an intersection made with a parallel line 30' S. & a line 30' E. & parallel to the & Pacific Hy. thus establishing W. Line Block 12 & NW. Cor. Bl. 12. A line parallel to & 260' E. of W. Line Bl. 12 was then established (for the E line Blk 12)

From information furnished by John G. Harem, a 3/4" pipe was found which he stated he observed 6' westerly but it was plowed out & set wrong. This was for the SE. Cor Lot 3. From this point a 251.25' measurement was made along the E. line Blk. 12 and a 1/2" pipe found & a 1" sq hub was found 83.75' N. (on E. line Block) & 1675' further N. 1 measured to 3/4" pipe referred to by Mr Harem. A 30° angle was turned from W. line Bl. 12 to the 1/2" pipe found first & thus a 1/2" pipe was found at a point to be 83.75' N. of SW. Cor Bl. 12; 83.75' N. of this latter point a 1/2" pipe was found for NW. Cor. Lot 1 & 83.75' further N. a partly decayed hub was found. A msmt. from 1/2" pipe at NW. Cor. Lot 1 to NW. Cor. Block, of 532.8' was made & from this the NW. Cor. Lot 2 was set, by proportionate measurements, 365.7' from NW. Cor. Block 12. A 1° angle was then turned from point at NW. corner Lot 2 & it checked on 3/4" pipe set from Mr Harem's information & from msmt. from 1/2" pipe 251.25' S. (to the south). True bearing on Line bet. Lots 2 & 3.

*Arthur Boyer*  
 Dep. Co. Surveyor

For Bowker Survey refer to Survey Record Book No. 3, Pg. 264, County Surveyor's Office.

Bearings, True scale, 1" = 100' ft.  
 V 34 E 41