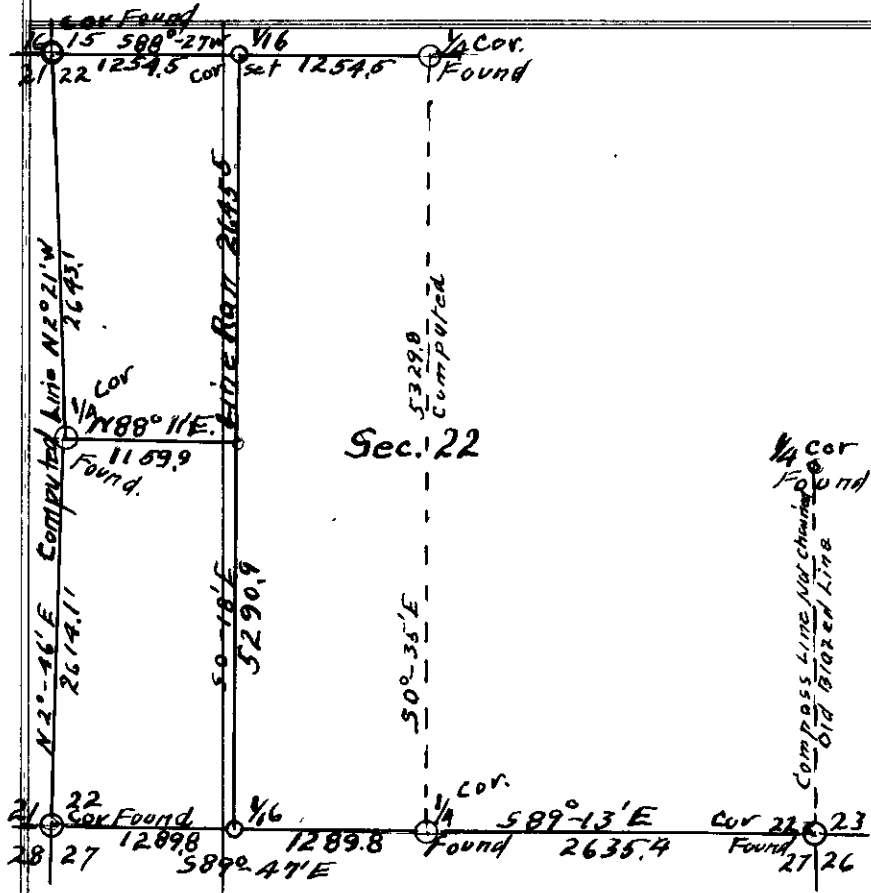


# COUNTY SURVEYOR'S RECORD, DOUGLAS COUNTY, OREGON

BUSHONG & CO. PORTLAND, ORE. 87545

Survey No.	Made on	July	1937.	Survey No.	Made on			
In Town.	32 S.	Range	4 W.	Sec.	22	In Town.	Range	Sec.
Made for	Clare Lumber Company.			Made for				
Purpose of	To establish Corners.			Purpose of				



Survey made with a transit, all angles turned and a 300 foot chain used on slope measurements.

Began at the  $\frac{1}{4}$  corner on the North side of section 22 and ran West by needle and at 2509.0 feet found the section corner common to sections 15-16-21&22. The true line being S. 88° - 27' W. At a point N. 88° - 27' E. 1254.5 feet set the 1/16 corner on true line. Turned off of the random line West 91° - 26' and ran S. 1° - 26' E. a random line to a poi point, from which point ran West 1544.4 f

feet to the corner of sections 21-22-27-28 and also ran East 1033.9 feet to  $\frac{1}{4}$  corner on the South side of Section 22. The true line between the Corner of section 21-22-27&28 and the  $\frac{1}{4}$  corner on the South side of section 22 is S. 89° - 47' E 2579.6 feet of the 1/16 Corner on the South side of section 22 to ~~the~~ West of the  $\frac{1}{4}$  corner is N. 89° - 47' W. 1289.8 feet. This line was tied on to the random line ran S. 1° - 26' E. from 1/16 corner set on the North side of Section 22; or the true line was S. 0° - 18' E. 5290.9 feet At the mid point on this line ran West on random line and found the  $\frac{1}{4}$  Corner on the West-side of section 22. This true line was found to be N. 88° - 18' E 1159.9 feet from the  $\frac{1}{4}$  corner on West to the 1/16 corner line ran through the Section 22.

From the  $\frac{1}{4}$  Corner on the South side of Section 22 ran East and at 2635.7 feet found the Corner of Sections 22-23-26&27, making the true line N. 89° - 13' W. 2635.9 feet. From this corner to sections 22-23-26& 27 ran a compass line North along a blazed line and found the  $\frac{1}{4}$  corner on the East side of Section 22, line not chained. As these Corners were the main points wanted by Mr. Clare the survey was not continued.

Surveyed by Bert A. Lane,  
Written up by

*H. L. Epstein*  
County Surveyor.