

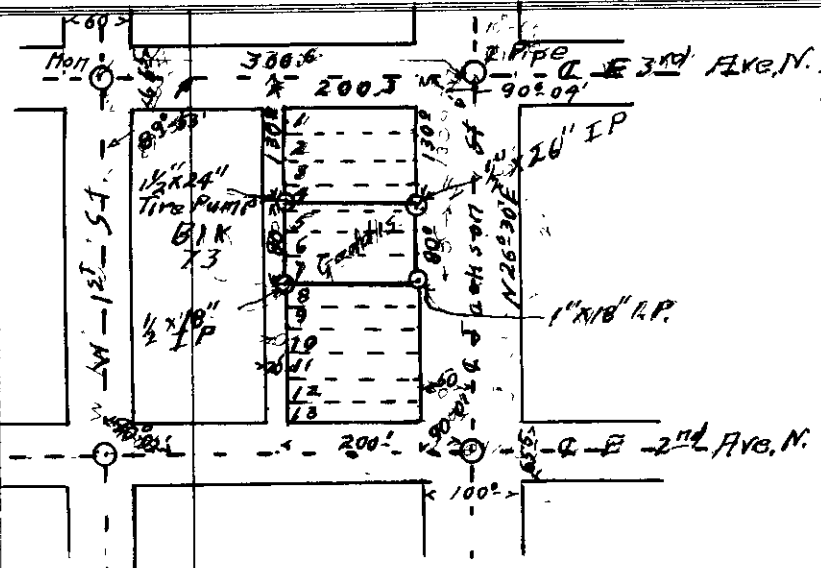
COUNTY SURVEYOR'S RECORD, DOUGLAS COUNTY, OREGON

BUSHONG & CO. PORTLAND, ORE. 87545

Survey No. 63 Made on April 28th. 1937.
 In Town. 27 S. Range 5 W. Sec. 18
 Made for A. J. Weddis
 Purpose of To find lots lines.
 Chainmen: N. E. Richardson & Bert A. Lane.

Survey No. 64 Made on March 3rd. 1937
 In Town. 27 S. Range 6 W Sec. 24
 Made for Johns & Vinson
 Purpose of dividing lot 13 Block 55 Railroad addition in half.
 Chainman: Bert A. Lane & N. E. Richardson
 Recorded in V 15 E 19

Recorded V 15 E 18



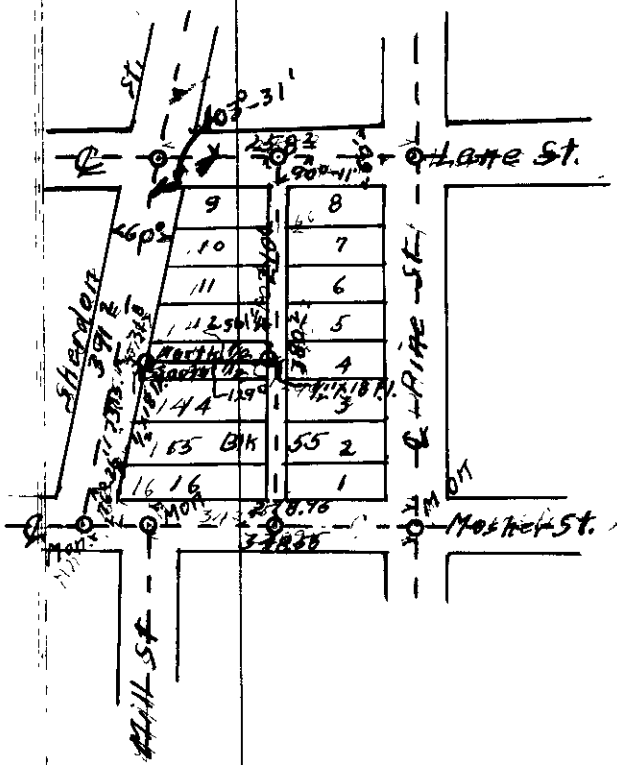
Beginning survey at street monument at Jackson Street and W. 2nd Ave. N. ran N. 26°30'E 392.2 feet to intersection Pipe marking intersection of Jackson street with W. 3rd Ave. North, thence ran N. 63-30 W. 380.6 feet to street monument at intersection of W 1st St. & W 3rd Ave. North Set a point 200.3 feet west of Intersection pipe at intersection of W. 3rd Ave. North and Jackson St.

Also ran from St. Monument on Jackson St. and W. 2nd Ave. N. to intersection of W 2nd Ave. N And W 1st Street 380.0 feet set A post at 200.0 feet N 63-30 W of the street monument at Jackson St. and W. 2nd Ave. N.

Set an iron pipe at intersection of Jackson Street and W 3rd. Ave North. Ran South 26-30 W. 130° feet set point, also 210.0 feet set point. Thence set on point in the center of W. 3rd Ave North and center line of alley Block 73 produce North as previously set, and run S. 26°30 W 130° and also 210° set points. Set a point on

Jackson Street 130° feet South 26-30' W Of Street intersection on Jackson St with W 3rd and N. sighted on 130 feet on point in alley and set N. W. and N. E. corner of Geddes property on point for the North line of 5 feet of South side of lot 4, they did same on 210° point and set S E and S W Corner of lot 7 block 73.

H. L. Epstein
Co. Sur.



Survey made to establish the boundary line on splitting lot 13 Block 55 Railroad Addition.

Beginning survey at street monument at the street monument of Mosher & Pine street and ran N 61° West on center line of Mosher st. 278.95 to street monument of Mosher & Mill street, thence at 348.56 feet to street monument at intersection of Mosher & Sheridan Street turned an interior angle of 76° 26' to center line of Sheridan street and ran N 42° 19' E. 391.2 feet to the intersection of Sheridan St. with Lane Street. Thence turn 103° 31' interior to the center line of Lane street of ran 61° 12' E 258.2 feet to intersection of Lane with Pine street. At a point 147.6 N 61-12 W 90°-11' and for Lane street east and ran through alley 380.2 feet to center line of Mosher street at point 147.6 N. 61°-15 W of street Monument at intersection of Mosher & Pine Streets. Also at point 210.1 S. 28-59 W. from point on Lane street set a point also at a point 175.13 feet N. 42-19 E. of street monument at intersection of Sheridan & Mosher street. Ran from this point on Sheridan street to Point in alley previous set. Setting 1/2" X 18" iron pipe on East line of Sheridan street on center line of lot 13 and ran 129.0 feet through lot to 1/2" X 18" pipe on West line of alley. And center line of Lot 13. This splits Lot 13 Block 55 Railroad Addition in half completing survey.

H. L. Epstein
Co. Surveyor