

COUNTY SURVEYOR'S RECORD, DOUGLAS COUNTY, OREGON

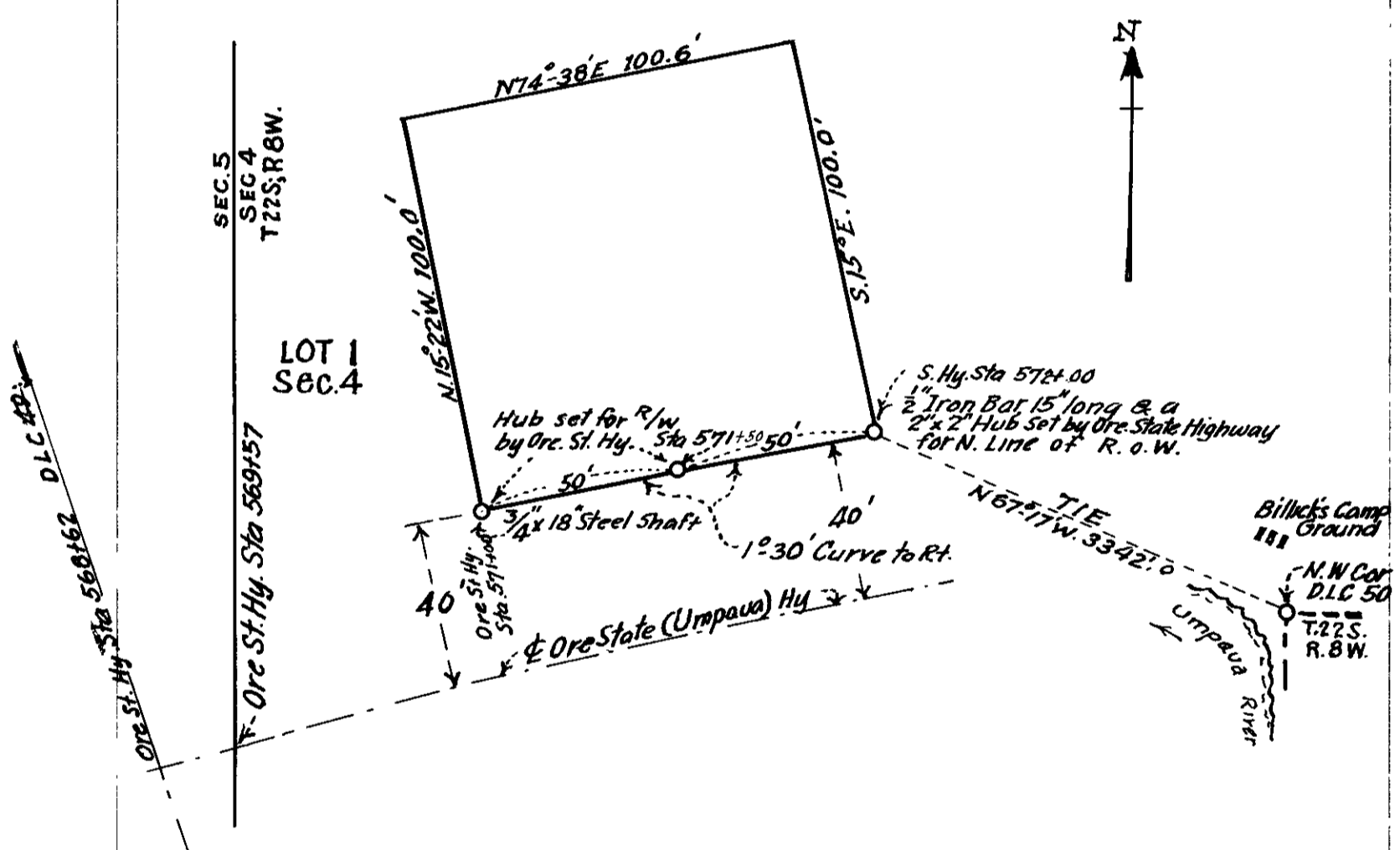
BUSHONG & CO. PORTLAND, ORE. 87545

Survey No. 31 Made on May 9th 1936
 John Byron
 In Town. 29S Range 7 W Sec. D.L.C. 38
 Made for John Culver Est. by Harold Bellows Adm.
 Purpose of To determine the N. line D.L.C. 38
 by Arthur Boyer, Dep.

Survey No. 32 Made on July 28. ;936
 In Town. 22 S. Range 8 W. Sec. 4
 Made for W. Billick & F.A. Thomas
 Purpose of For Deed Description and Corners

I started the survey from the N.W. corner of the John Byron D.L.C. No. 38 which is a 1" steel eye bar with bearing trees renewed by F.C. Frear, from orig. tree, in April, 1936. I then ran East, on a random line, 2214.8 ft to a point opposite and 49.3 ft North of the N.E. corner of said D.L.C. which is a rock with the original tree which is now a stump which is the tree which is shown in the gov't notes as being N.70°W. 23 links from the corner; offsets were then measured by proportionate distances, over to the south of the random line to the true North line of the D.L.C. thus establishing this line; three quarter inch by thirty inch G.I pipe were driven on the true line at points 64.9 ft; 315.1 ft; 566.3 ft. and 760.8 ft from the N.W. corner of this claim on the true line.

Arthur Boyer
 Dep. Co. Surveyor.



For Billick & Thomas

This survey was started from the N.W. corner of Donation Land Claim No. 50, T.22 S., Rg. 8 W. N.M. which I renewed from one B.T. the Myrtle Bearing Tree having been cut down. Traversed a tie line from this D.L.C. corner to a point N.87°-17'W. 3342.0 ft. which is at a 2" x 2" wooden hub set by the State Highway Dept for the N. R/W stake opp. sta 572 ± 00, set a 1/2 inch by 15 inch iron bar here, then ran around the North right of way line of the state highway on a 1°-30' curve (which is a curve to the right @ to stationing) a distance of 100.0 ft to another state highway right of way hub, 2" x 2" and set a 3/4 inch by 18 inch steel shaft here at the stake, these hubs are 40.0 ft from the center of the highway. thence I ran N.15°-22'W; 100.0 ft. to a point, thence N.74°-38'E. 100.6 ft to a point, thence S.15°E. 100.0 ft to the place of beginning. The hub at the S.W. corner of this tract is opposite the state highway center line station No. 571 ± 00

Arthur Boyer
 Deputy County Surveyor.