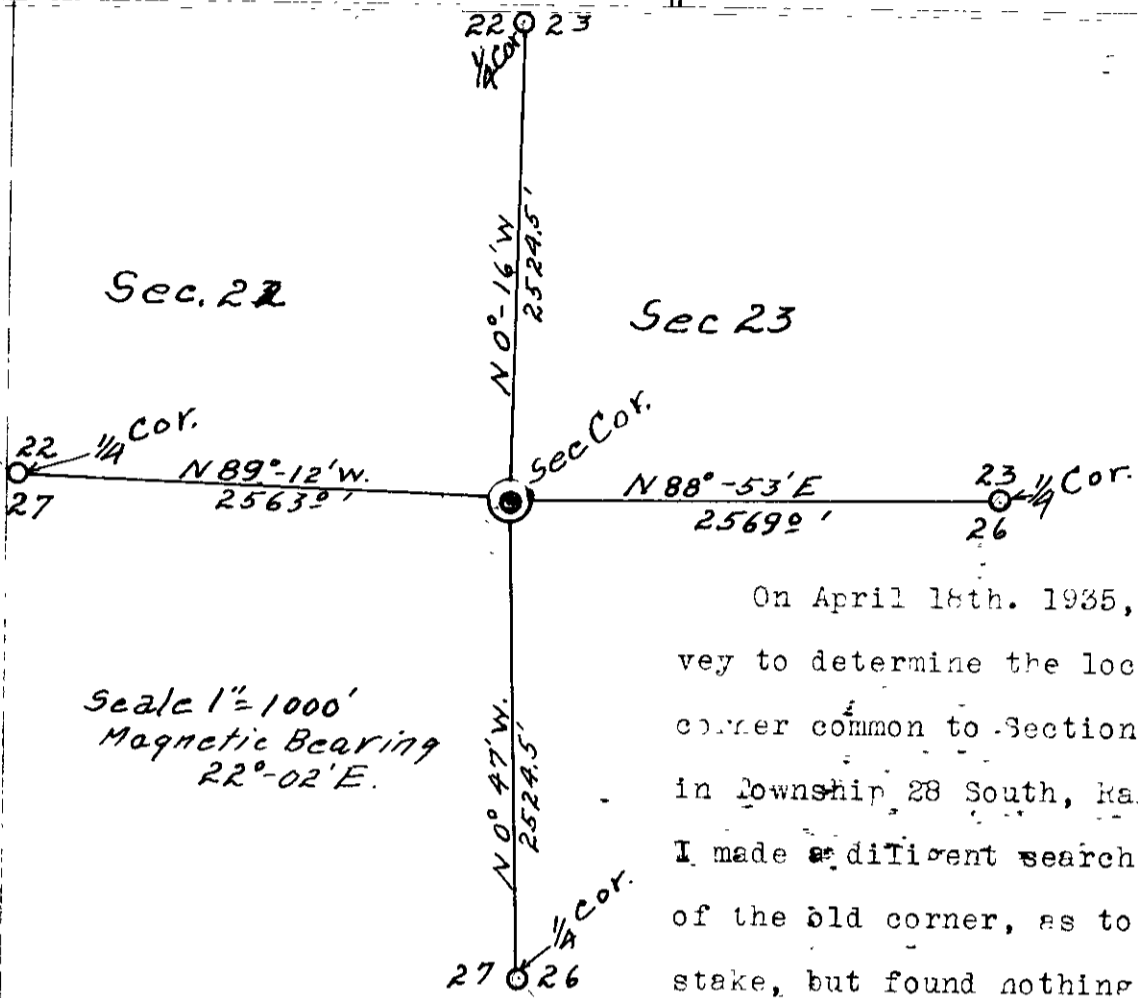


COUNTY SURVEYOR'S RECORD, DOUGLAS COUNTY, OREGON

BUSHONG & CO. PORTLAND, ORE. 87545

Survey No. 26 Made on Apr. 18, 19 & May 10, 1935.
 In Town. 28 S. Range 4 W. Sec. 22, 23, 26, & 27
 Made for Conley, Theckery, Steuer.
 Purpose of establishing the section corner to Sections 22, 23, 26, & 27.
 Chsinmen, Lane, Cain, and Jack Mooris, Transitmen, Lane, Cain & Eppstein.
 Light Mountain Gurley Transit. used.

Survey No. Made on
 In Town. Range. Sec.
 Made for
 Purpose of



Scale 1" = 1000'
 Magnetic Bearing
 22° - 02' E.

On April 18th. 1935, I started the survey to determine the location of the Section corner common to Sections 22, 23, 26, & 27, in Township 28 South, Range 4 West, T. M. I made a diligent search for any evidence of the old corner, as to bearing trees or stake, but found nothing. Mr. Conley said

he had seen a pipe near an old fence corner at one time, but I could find no evidence at this time.

I then go to the 1/4 section corner between sections 22 & 23, which had been set by Ben B. Irving, Deputy County Surveyor, from the old bearing trees and run a transit line Southerly, using deflection angles, and true bearing from a direct solar observation, Magnetic bearing 82° - 02' E. and chaining with a 300. foot steel tape, slope measurement, reduced to horizontal, to the 1/4 section corner between sections 26 & 27, which I establish from one old bearing tree, namely a laurel, bearing S. 55° E. 6.6 feet, and I compute the true line to be S. 0° - 32' E. 5049.0 feet.

I then go to the 1/4 section corner between sections 23 & 26, which I establish from old bearing trees, and run Westerly, same method as North & South Line, tying into my N. & S. line and continue westerly to 1/4 Section Corner between Secs. 22 & 27, but could not find same at this time, so continue Westerly and find the Sec. cor. common to Secs. 22, 23, 26, & 27, a stake in place. I then retrace and make search for the 1/4 sec. cor. bet. secs. 22 & 27 and find one lod bearing tree with scribe marks plain, other tree down. The line between 1/4 section corner of secs. 23 & 26 to the 1/4 section Corner between Sections 22 & 27 is S. 89° - 50' W.

Then by double proportionate measurement, which gives the North & South Line as Follows:

5080. : 5049.0 as 2640 : x making x equal to 2524.5 feet.
 Also the East & West Line as Follows:
 5293.86 : 5131.2 as 2649.9 : y. Making distance y equal to 2568.5 feet.

Now I set the corner to Sections 22, 23, 26 & 27 from my points on the true lines between the 1/4 corners both N. & S. and E. & W. Lines; moving my point West 11.5 feet from the N. & S. line & South 42.6 feet from E & W. line. as to the method of Double proportionate measurement. The lines from the Sections corner to the 1/4 section corners have the following bearing and distance;

- Sec. Cor. North to 1/4 Sec. Cor 22 & 23, N. 0° - 16' W. 2524.5 feet.
- " " South " " " " 26 & 27 S. 0° 47' E. 2524.5 feet.
- " " East " " " " 23 & 26 N. 88° - 53' E. 2569.0 feet.
- " " West " " 1/4 Sec. Cor 22 & 27, N. 89° - 12' W. 2563.0 feet.

This Corner fit the Government field notes as to the streams both East and South of corner.

H. L. Eppstein
 Co Surveyor

Note V23 E1