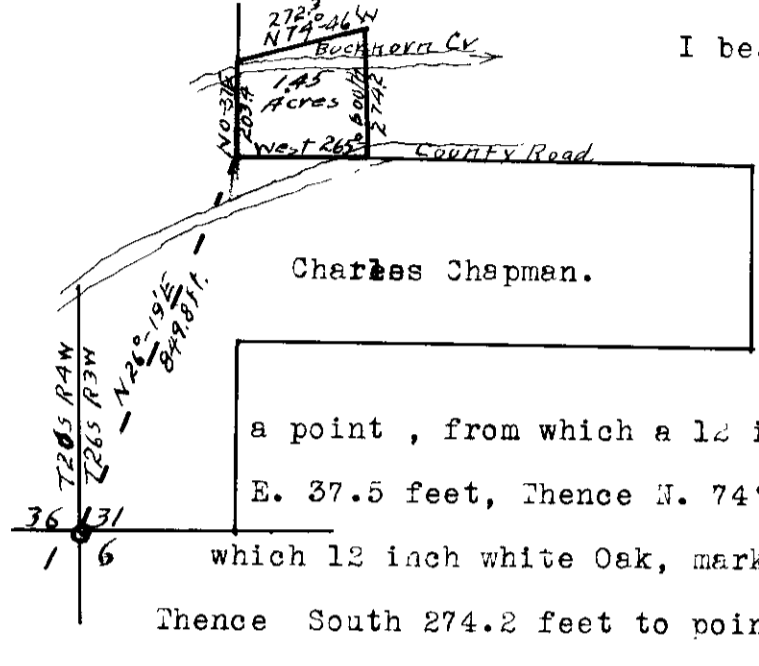


# COUNTY SURVEYOR'S RECORD, DOUGLAS COUNTY, OREGON

BUSHONG & CO PORTLAND, ORE. 87545

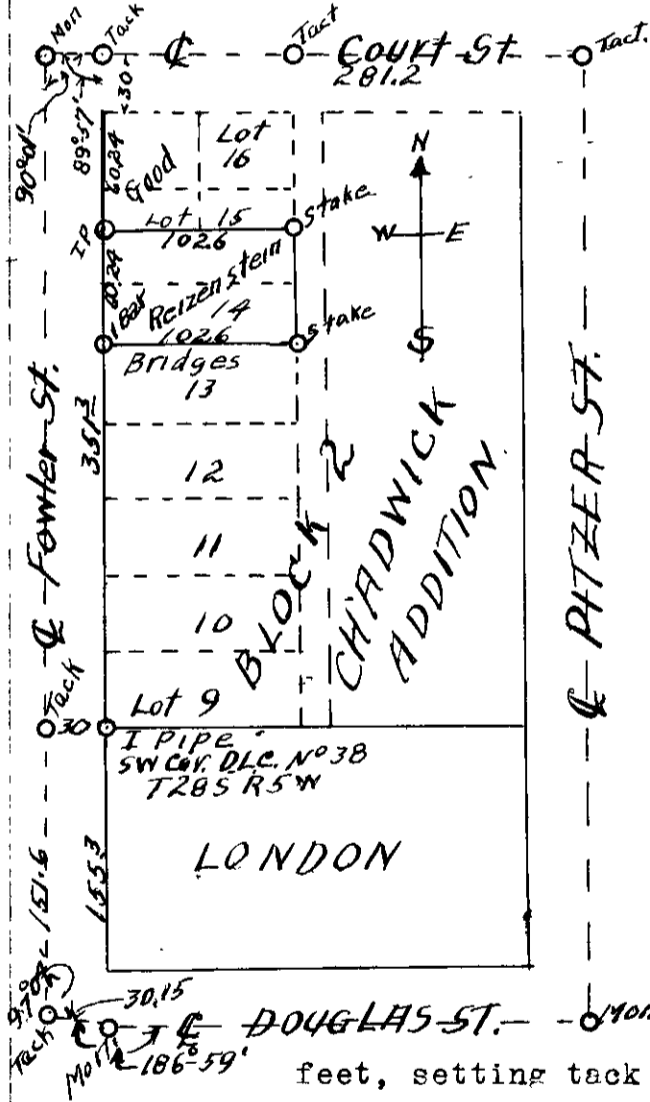
Survey No. 22 Made on June 21 1935.  
 In Town. 26 S. Range 3 W. Sec. 31  
 Made for Charles Chapman  
 Purpose of Deed Description  
 Chainman H. E. Richardson  
 Notes Loose Leaf. V19E43 - CS 14/43

Survey No. 23 Made on Aug. 23 1935.  
 In Town. 27 S. Range 5 W. Sec. 19  
 Made for Louis Reizenstein  
 Purpose of establishing lot lines of Lot 14 & South 1/2 lot 15 Chadwick Addition.  
 Chainmen Richardson & Lane.  
 V23, E2



I began the survey at a point, from which the Section Corner common to sections 31, 36. 1 and 6 of Township 26 & 27 South, Ranges 3 & 4 West, bears S. 26° - 19' W. 849.8 feet; Thence I ran N. 0° - 37' E. 203.4 feet to a point, from which a 12 inch white Oak, marked R.P. bears N. 88° E. 37.5 feet, Thence N. 74° - 46' E. 272.3 feet to point, from which 12 inch white Oak, marked R.P., bears S. 57° W. 52.3 feet, Thence South 274.2 feet to point in County road, Thence West 265.0 feet to the place of beginning. Containing 1.45 acres more or less.

*H. L. Reizenstein*  
 County Surveyor



I began survey at the street monument at an angle in Douglas Street, backed sighted on Street mon. at intersection of Pitzer & Douglas Streets, turned an exterior angle of 186° - 59' to a St Mon. on Douglas St. West, and set straddle tacks on center line of Fowler St. I then turned North and chained 155.3 feet, where I found a pipe, the SW. corner of lot 9, which is also the SW. Cor. of D.L.C. No 38. T. 27 S. R. 5 W. I set on this cor. and turn 90° to the West, chain 30 feet and set a tack on the Center of Fowler St. I then go to a St. Mon. at the intersection of Fowler & Court St. & sight on tack in place on Pitzer and Court St and chain same a distance 281.2 feet, setting tack 30 feet on center line and also 132.6 feet on center line of Court St. I then sight on tack 30 feet west of the Sw. cor. of D.L.C.L. NO. 38, making interior angle with Court St. of 90° - 01' and then set intersection of Fowler st. with Douglas St. chaining from tack 30 feet west of Sw. Cor of Cl. No 38, distance 151.6 feet. The angle interior at intersection of Fowler St. with Douglas St. is 97° - 04', measured from tack to st. Mon. on Douglas as 30.15 feet.

I then go to tack 30 feet East of St. Mon. at intersection of Fowler and Court St. and sight on Donation Cl. Cor and chain distance of 351.3 feet which makes each Lot 40.16 ft. wide. I set I pipe on center of lot 15 & also I Bar at Sw. Cor lot 14. turned angle 89° 57' off lot line to st Mon. Fowler & Court St. I go to tack 132.6 ft East of Mon. on center line Court St. turn 89° 57' ~~left~~ to left off Mon. on E of Court and set stake center lot 15 and also SE. corner of Lot 14