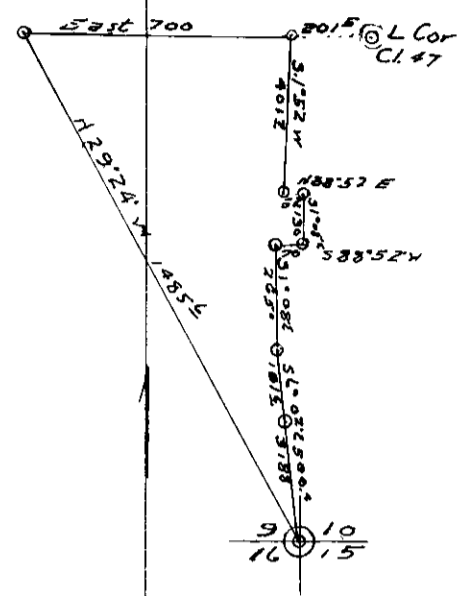


COUNTY SURVEYOR'S RECORD, DOUGLAS COUNTY, OREGON

BURHORN & CO. PORTLAND, ORE. 87545

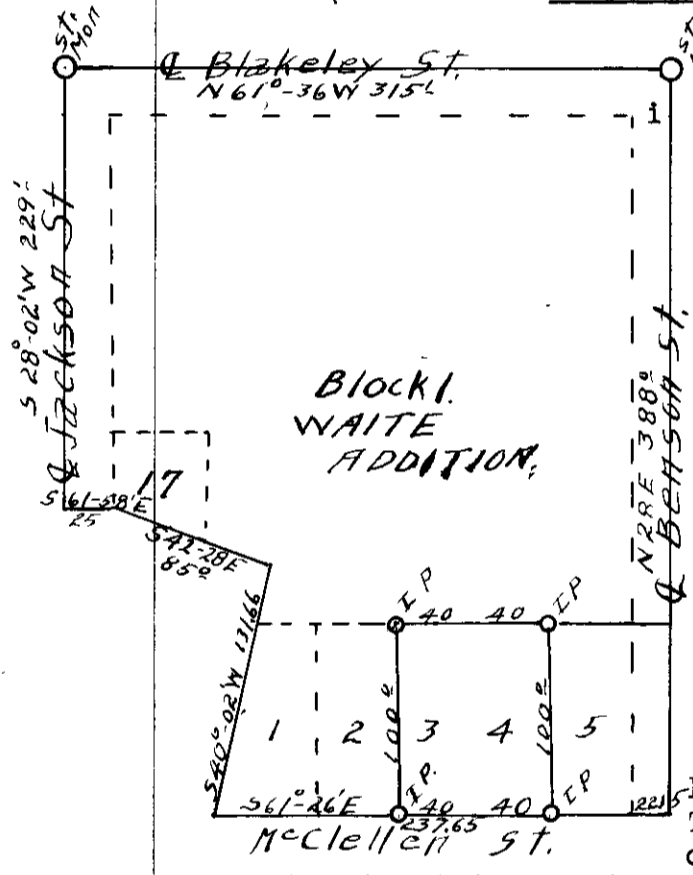
Survey No. 20 Made on June 12 1935
 In Town. 30 S. Range 4 N. Sec. 9
 Made for C. C. Hill
 Purpose of For making description for deed
 Gene Richardson chainman,
 SEE ALSO C.S. 18/63

Survey No. 21 Made on March 23 1935.
 In Town. 27 S. Range 6 W. Sec. 24.
 Made for Mrs. Edith Kelly.
 Purpose of To set the Corners of Lots 3 & 4
 Block 1, Waite Addition to Roseburg.
 Chainmen B.A. Lane & N.E. Richardson.



Beginning at the corner common to Sec'9,10,15 & 16
 Tp. 30 S R 4 N.
 Thence, N. 29° 24' W. 1485.6 feet, (line in river) to
 a 3/4" X 24" iron pipe, 24" in the ground, on the south line
 of the Geo. T. Day D.L.C. No. 47 in above Tp and Range
 Thence East 700 feet to a 3/4" X 24" iron bolt, from which
 the L cor of the Day Cl 47, bears East, 201.5 feet,
 Thence S. 1° 52' W. 401.7 feet to 3/4" X 24" iron pipe,
 " N. 88° 52' E. 52.0 " " " " " "
 " S. 1° 08' E. 130.0 " " " " " "
 " S. 88° 52' W. 70.0 " " " " " "
 " S. 1° 08' E. 265.0 " " " " " "
 " S. 6° 02' E. 181.6 " " " " " " on
 the right bank of the South Umpqua River.
 " S. 6° 02' E. 318.8 feet to the place of beginning.
 Note- the section cor is tied in to the W.C. No. 5 East
 of the Sec Cor. Cont 10, 3188 Ac

Frank Cain
Surveyor



#21
 I began the survey at the Street Monument
 at the intersection of Jackson Street with
 Blakeley Street, sighted on the street monument
 at the intersection of Blakeley Street and
 Benson Street and chained the distance between
 monument as 315.1 feet. Thence I sighted on a
 monument on Jackson Street, North, and chained
 205.5 feet and set a point. I turned of 90°
 from previous line to the right 25.0 feet to a
 point, marking the North-east Corner of Lot 17
 of Block 1, Waite Addition, Thence turned 70° -
 30' off the West property line of Jackson Street
 and ran 85.0 feet, Thence turned 82° - 30' defle
 deflection angle and ran 131.66 feet to a point,
 marking the North-East Corner of Lot 1, Waite Ad
 dition.
 I then return to the Street monument at
 Blakeley and Benson Streets and turned an inter
 ior angle of 90° - 24' and ran N. 28° E. on Ben
 son Street, 388.0 feet, Thence turned 89° - 06' i
 interior angle to the North-East Corner of Lot 1
 Block 1 Waite Addition, a distance of 237.65 feet.
 This distance was 2.15 feet to far for distance
 called for on the South property line of McClellen
 Street, although the survey closed up. I the chain from the North-East C
 Corner of Lot 1 Block 1, Waite Addition along the South line of Mc
 Clellen Street and set the North-East Corner of Lot 3 and North-west
 Corner of Lot 4, Block 1 of said Addition and Thence I set the South
 East Corner of Lot 3 and the South-West Corner of Lot 4 of Block 1
 Waite Addition to the City of Roseburg, At the said Corners I
 drove Iron Pipe. Survey done carefully and Chaining was good.

H.L. Lippstein
 Co. Surveyor, Douglas Co.