

COUNTY SURVEYOR'S RECORD, DOUGLAS COUNTY, OREGON

BUSHONG & CO. PORTLAND, ORE. 87545

Survey No. 11 Made on Nov. 7th. 1933.

In Town. 30 S. Range 3 W. Sec. 25

Made for Mrs. Mary Furlong

Purpose of ; To give the Approx. location of the NW. Corner of the SW 1/4 of NE 1/4 of Sec. 25 T. 30 S. R 3 W.

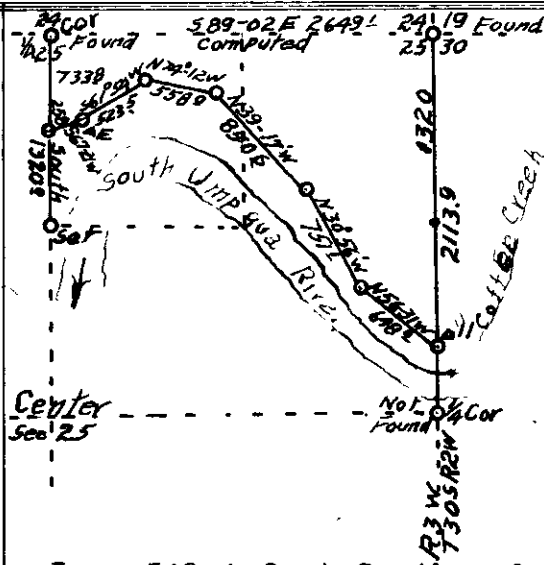
Chainman C. W. Crocker.

Survey No. 12 Made on March 14th. 1934.

In Town. 25 S. Range 5 W. Sec. 12

Made for Chas W. Hartley

Purpose of To establish the West line of Lot 4, Block 3, Plat "J" Southerlin Land and Water Co.



I started at the Corner of Sections 24 , 25 19 & 30 on the Range line between Ranges 2 & 3, W Township 30 South, and ran South ( Needle bear.) with traverse, chained on slope, and at 1320,0 feet set a point for the 1/16 corner, and conti ued South on traverse to the county road at Sta ll; coordinates of this sta. were South 2113.9 feet and East 17.4 feet. Thence South to apoint 2640.0 feet South of the Section Corner, where I make a diligent search for the 1/4 Corner on the East side of Section 25, but could find no evidence of the 1/4 Corner. Mrs. Furlong did not wish to go to the expence of replacing this Corner. So I return to Station 11 and continue the traverse down the county road in a Westerly direction to Station "E" and compute the coordinates for same and find, that

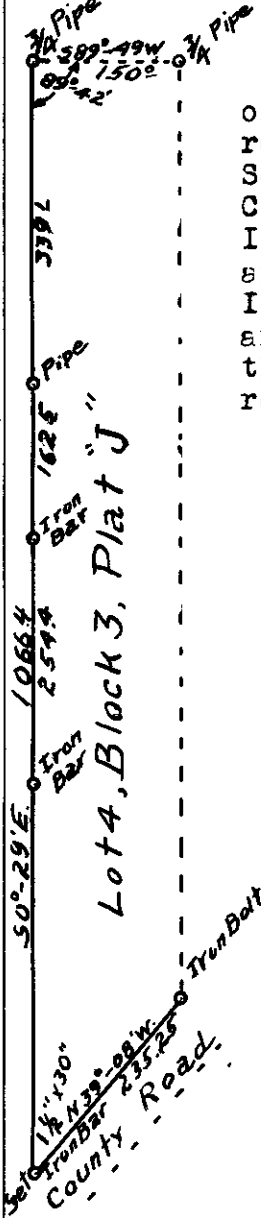
I am 549.4 feet South and 2473.2 feet West of the Starting Corner. Thence I look for the 1/4 Corner between Sections 24 & 25 and find same. I then ran S. 1° - 09' W. and tie on the other traverse at Station "E", and compute the section line from 1/4 Corner between Sections 24 & 25 to the Sections 24.25, 19 & 30 to be S. 89° - 02' E. 2649.1 feet. Thence I continue line S. 1° - 09' W. and at 1320.0 feet I setover 26.5 feet East for the NW. CORNER of the SW 1/4 of NE 1/4 of Section 25. Said point being on rock on the West side of the South Umpque River or on Right bank. Mrs. Furlong not desiring to go to any more expence on the survey and this showing the approximate Corner, I did not continue the survey.

*H. L. Epstein*  
County Surveyor.

Notes V 18 E 40

Hartley Survey NO. 12

T 25 - 5 S. 12



I began survey at an iron bolt, marking the South-East Cor. of Lot 4, Block 3, Plat "J"; on the right of way of the County road, taking bearing S. 39° - 08' E., I ran 235.25 feet to the South-West Corner of said Lot 4. Thence I went to the North-West Corner of Lot 4 and with the transit on the North- West Corner I sighted on the North-East Corner of Lot 4 and turned an interoir angle of 89° - 42' to the right on the West line of Lot 4. Thence I ran S. 0° - 29' E. and at 339.1 feet set a pipe, at 501.6 feet a an iron bar, at 756.0 feet and iron bar, and at 1066.4 feet I hit the previous set South-West Corner of Lot 4, where I set a 1 1/2" x 30 round iron bar.

*H. L. Epstein*  
County Surveyor.

Notes V 14 E 57