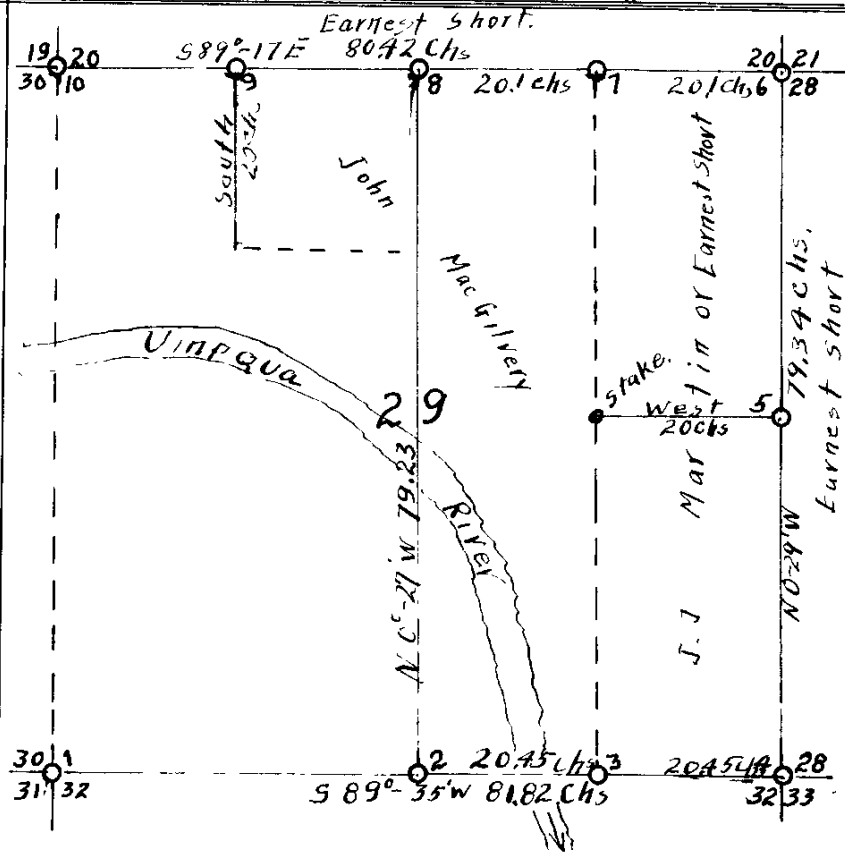


# COUNTY SURVEYOR'S RECORD, DOUGLAS COUNTY, OREGON

BUSHONG & CO. PORTLAND, ORE. 87545

C.S. 14/36

<p>Survey No. <b>2</b> Made on Mar. 1926 &amp; Nov. 1929</p> <p>In Town. 24 S. Range 7 W. Sec. 29</p> <p>Made for Ernest Short, John MacGilvery, and J. J. Martin</p> <p>Purpose of establishing Boundary Lines of Property.</p> <p>Chainmen { Rudolph Ritzman Bert A. Lane</p> <p>Present Short, Debolt, MacGilvery,</p>	<p>Survey No. _____ Made on _____</p> <p>In Town. _____ Range _____ Sec. _____</p> <p>Made for _____</p> <p>Purpose of _____</p>
---	--



Corners Set	
1	2x2x20" sq I.P. B.O. 14" N41W 631ks W012" S22E 701ks W015" S52W 951ks
2	1/2" x 20" I.P. Fir 80W 2451ks " N63E 126 "
3	1/16 Cor Oak 16" N52W 441ks.
4	2x2x20" sq I.P. W0NB1W 351ks W015" N62E 831ks Fir 15S43E 98
5	1/2" x 20" I.P. Fir 18 N17W 281ks Fir 15 S83E 32 "
6	1/2" Buggy Axle Fir 48 S44E 271ks Fir 12" N63W 571ks Fir 12" S60W 54 "
7	1/16 Cor Oak 16" East 81ks.
8	1/2 Buggy Axle Fir 8" N42W 341ks " 12" S72-30E 201ks
9	1/16 Cor Fir 18" S55W Fir 12" S. 16 E.
10	AUTO AXLE Fir 15" N89E 431ks

I began the survey at the South-west Corner of Section 29, which I replace from old bearing tree, thence I ran East and at 40.00 chains I make a search for the 1/4 Corner between Section 29 & 32, but old witness trees gone, thence I continue East to the right bank of the Umpqua River at 48.7 chains, here I make a search for the meander Corner but could find no evidence. Thence East across river 7.1 chains and search for meander corner on the left bank of the Umpqua River but found no evidence. Thence I continued East and at 81.82 chains I found the Section Corner to Section 28-29-32 & 33, which I reset from an old witness tree. My line fell 58 links South of Corner. Thence I ran S. 89° 35' W. and at 204.85 chains I set the South-West Corner of SE 1/4 of Section 29, Thence I continued S. 89° 35' W. and at 40.00 chains I set the 1/4 Corner between Sections 29 & 32. Thence I continued on line and at 81.82 chains to the Corner of Sections 29-30-31 & 32.

Thence I returned to the corner of Sections 28-29-32 & 33 and ran North and at 39.67 chains I fell 33 links East of the 1/4 corner, which I set from one old witness tree, Thence I continued N. 0° - 29' W. and at 79.34 chains hit the Section Corner common to Sections 20-21-28 & 29, which I set in from old bearing trees. This line I find to run N. 0° - 29' W. 79.34 chains.

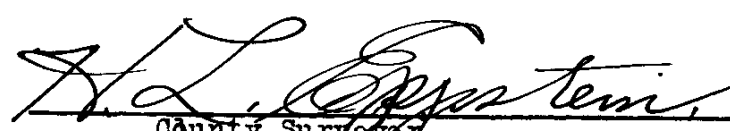
Thence I ran West and at 40.00 chains I hunt for the 1/4 Corner between Section 20 & 29 but could not find, so I continued West and at 80.42 chains I found the witness tree to the corner common to Sections 19-20-29 & 30 which I set. I found 80.42 chains and I was 101 links North of the corner. Thence N. 89° 17' E. and at 20.1 chains I set the 1/16 corner or the NW. Corner of NE 1/4 of NW 1/4 of Section 29. Thence on the same bearing and at 40.2 chains I set the 1/4 corner between Sections 20 & 29. Thence continued on same line and at 60.3 chains set the NE. Corner of NW 1/4 of NE 1/4 of Section 29, thence on the same course to the section corner to Sections 20-21-28 & 29.

Thence I returned to the 1/4 Corner between Sections 29 & 32 and ran N. 0° 27' W and at 79.23 chains I intersected the 1/4 Section Post between Sections 20 & 29.

Thence I went to the 1/16 corner, making the NW. Corner of the NE 1/4 of the NW 1/4 of Section 29 and ran South 20.00 chains and set a stake for the SW Corner of the NE 1/4 of the NW 1/4 of Section 29.

Thence I returned to the 1/4 Corner between Sections 28 & 29 and ran West and at 20.00 chains I set a stake for the NW. Corner of the NW 1/4 of the SE 1/4 of Section 29.

Due to the expence the interest parties agreed to the setting of the two last corners in this manner.

  
 County Surveyor.