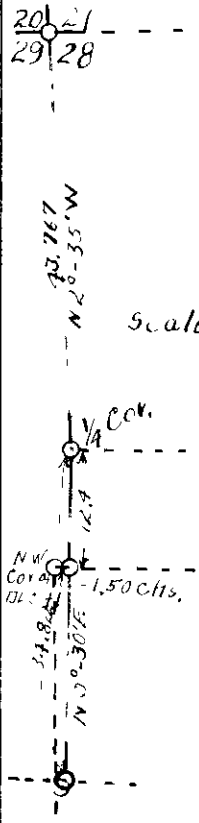


193 COUNTY SURVEYOR'S RECORD, DOUGLAS COUNTY, OREGON

BUSHONG & CO. PORTLAND, ORE. 87545

| | |
|--|---|
| Survey No. V14E19 Made on Sept. 16th. to 30th. 1929. In Town. 29 S. Range 5 W. J.M. Sec. 28. Made for P. E. Hale. Purpose of establishing section line between sections 29 and 28. B. A. Lane & N. E. Richardson, Chainmen. J. T. Black axeman. | Survey No. _____ Made on _____ In Town. _____ Range _____ Sec. _____ Made for _____ Purpose of _____ |
|--|---|

FN. 26'



Legal survey for P. E. Hale in section 28, T 29 S. R. 5 W. of the Willamette Meridian. B. A. Lane and N. E. Richardson, Chainmen; J. T. Black, Axeman. A. Gurley transit used in making survey, transit line run and all angles turned and read on the vernier. A 5 chain steel tape was used in making all measurement, on slope and the vertical angles read, and reduced to the horizontal distance.

I began the survey at the corner of Sections 20 - 21 - 28 - 29 in T. 29 S. R. 5 W. M., which corner had been set by G. G. Stewart on a previous survey from the old witness trees. Thence I ran South and at 40.00 chains I made a diligent search for the $\frac{1}{4}$ Section corner, but could not find same. Thence I continued South and at the North West Corner of D. L. C. No. 41. I search and find a black oak tree, which shows evidence of being the corner, and which tree, Mr. J. T. Black said " he had seen scribe marks on for this corner; Thence I ran South on my line , first having tied it to the D. L. C. corner, and at 78.58 chains I find the stump of an old witness tree for the corner of sections 28 - 29 - 32 - 33, which stump was a black oak, which bears N. 45° W. 290 links, From this stump I set the corner of Sections 28 - 29 - 32 - 33.

I ask Mr. Black, if he knew where the $\frac{1}{4}$ corner between section 28 & 29 was located. He said, " he did", and on going there I find an old stake in place and two oak tree down but with axe marks on them, and no scribe marks, which Mr. black said were the witness trees and that he had seen scribe marks on same. The old stake had evidently been set from these trees, so I tie my line to this corner and assumed it as good on Mr. Black testimony.

Thence I correct my line, finding after a Solar observation that the line from the Section corner common to Sections 20 - 21 - 28 - 29 to the $\frac{1}{4}$ corner between Sections 28 & 29 to run S. 2° - 35' E. 43.767 chains, and I set the 1/16 corner 21.883 chains N. 2° - 35' W of the $\frac{1}{4}$ Section Corner between Sections 28 & 29. From the $\frac{1}{4}$ corner to the sections corner common to sections 28 - 29 - 32 - 33, I find the line to run S. 0° - 30' W. 34.822 chains. I find that the Northwest corner of D. L. C. No. 41 to be South 12.45 chains and West 1.600 chains. instead of South 12.21 chains and West 1.63 chains, as called for in the field notes.

Thence I go to the $\frac{1}{4}$ corner between sections 28 & 29 and tie the trees, over 10 inches in diameter, cut down on the P. E. Hale's property to this corner and I find the trees cut, amounts to 30,050 board feet from the stumpage scale.

J. L. Spitzer
 County Surveyor.