

292

# COUNTY SURVEYOR'S RECORD, DOUGLAS COUNTY, OREGON

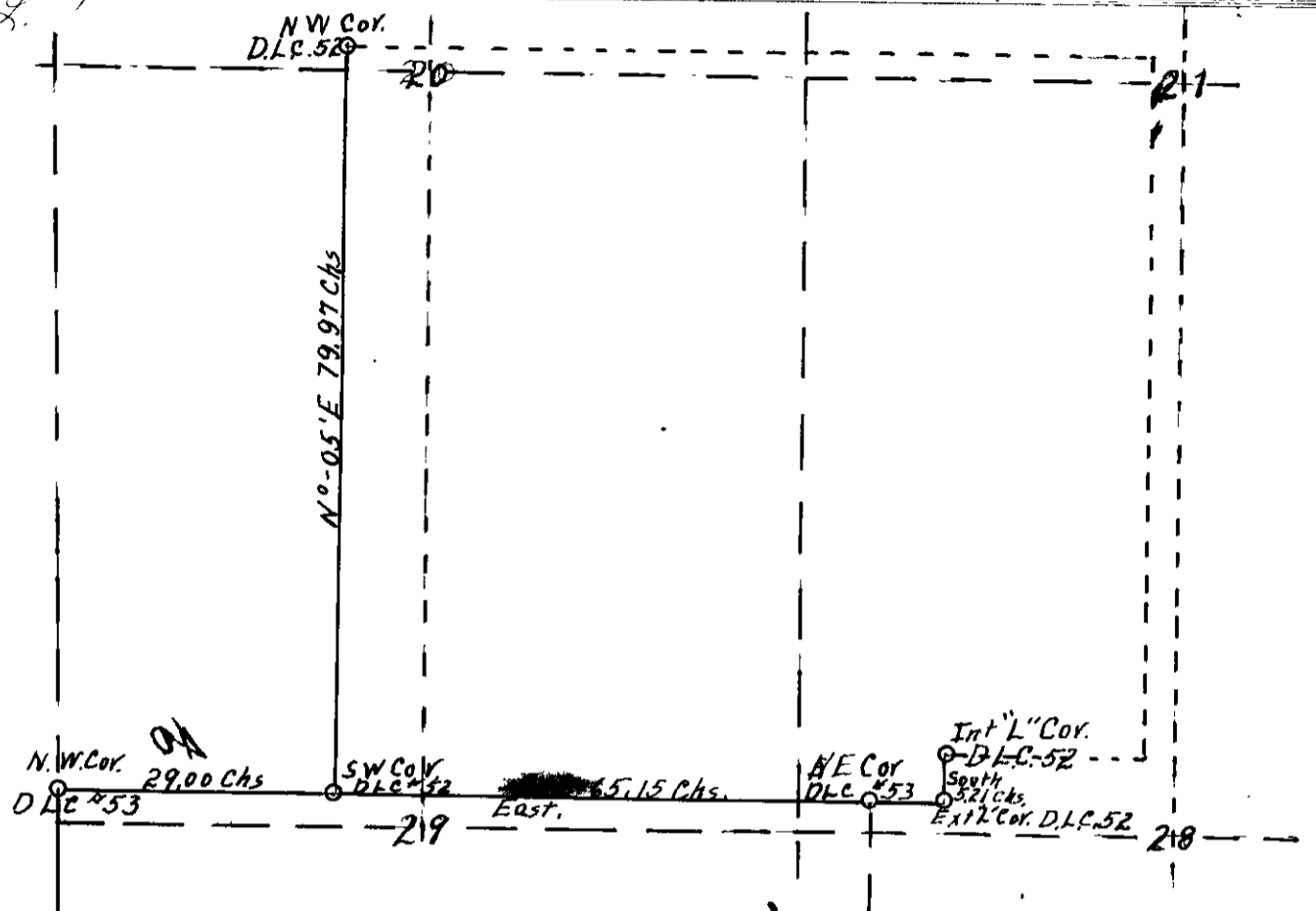
BUSHONG & CO. PORTLAND, ORE. 87545

Survey No. Made on Feb. 25 to 28 1929.  
 In Town. 27.S. Range 7 W. Sec. 20, 28 & 29  
 Made for N. L. Conn.  
 Purpose of Establish West & South Lines of  
 D. L. C. No. 52.

Survey No. Made on  
 In Town. Range Sec.  
 Made for  
 Purpose of

SEE TRIVING'S 1929 SURVEY  
 C.S. 22/39 L.

F.N.L.L.



The survey for N. L. Conn on D. L. C. No. 52 in T. 27 S R. 7 W. W. M. I took as my assistants N. E. Richardson, Ed Jones, Wallace DE Preist & N. L. Conn.

After a search for the S.W. Corner of D. L. C. No. 52 and could not locate same, I went to the N. W. Cor. of D.L.C. No.53, whose North Line is a continuation of the South Line of D.L. C. No. 52. Thence I ran East on the North Line of Claim 52 and at 29.00 chains I make another search for the S. W. Cor. but could not find any evidence of the old corner, Thence I continue East and at 86.25 chains I look for the N. E. Cor. of D. L. C. No. 53, but no indication of the Cor. was found, so I continue East and at 94.15 chains I look for the S. E. Ext. "L" Cor of Claim No. 52, but the Corner was gone. Thence I ran North and at 5.21 chains I found the old witness tree to the Int. "L" Corner of Claim No. 52. Thence I ran South 5.21 chains on the true line and at 94.15 chains East of the N.W. Corner of Claim No. 53, I set the S. E. Ext "L" Cor. of Claim 52. Thence I ran West on the true Line and at 7.90 chains I set the N. E. Corner of Claim No. 53; and at 65.15 chains, I set the S. W. Corner of Claim No. 52.

Thence from the S. W. Corner of Claim No. 52 I ran N 0° - 23' E. and at 74.97 chains I found the witness tree for the N. W. Corner of Claim No. 52. I renew this Corner and at 74.97 chains, find my line to fall 39 links East of said Corner. Thence I ran S. 0° - 05' W. on the true line 74.97 chains to the S.W. Corner of Claim No. 52

*W. L. Epstein*  
 County Surveyor.