

COUNTY SURVEYOR'S RECORD, DOUGLAS COUNTY, OREGON

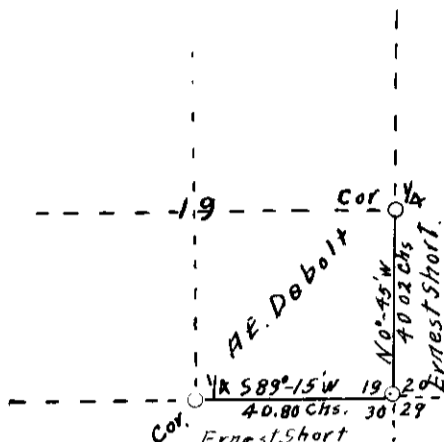
BUSHONG & CO., PORTLAND, ORE. 87545

Survey No **V7E51** Made on **Oct. 17 & 18, 1928.**
 In Town. **24 S. Range 7 W. Sec. 19.**
 Made for **Ernest Short and A. E. Debolt.**
 Purpose of **to establish boundary lines.**
 Chainmen **H. E. Richardson.**
 Axe. **Ernest Short & A. E. Debolt.**

F.N."LL."

Survey No. Made on **Oct. 23rd. to 30th**
1928.
 In Town. **30 S. Range 4 W. Sec. 9.**
 Made for **Earl Sumner and J. W. Montgomery**
 Purpose of **establishing a boundary line.**

ALSO
 C. S. File No. **7/52**
 MAP FILE **14.145**



Legal Notices were sent to Ernest Short and A. E. Debolt by registered mail, calling for a legal survey, six days prior to the time set for the survey.

I began the survey at the Corner common to Sections 19, 20, 29, & 30, T. 24 S. R. 7 W. W. M. which I had set on a previous survey from the two original bearing trees; 12" oak N. 89° E. 665 links & 12" oak S. 89° E 674 links, the other tree gone.

Thence I ran west by the needle and at 40.80 chains, I found the old fir bearing tree for the $\frac{1}{4}$ corner between Secs. 19 & 20, the oak bearing tree was in evidence but down. I set a Studebaker Auto axle for the corner and find that I fell 54 links North of the corner, making the true line bear S. 89° - 15' W 40.80 chains.

Thence I go to the Section Corner common to Sections 19, 20, 29, & 30 the above Township and range, and ran North by the needle and at 40.029 chains I found both the fir & myrtle bearing trees for the $\frac{1}{4}$ corner between Secs. 19 & 20. I place a cedar stake for this corner from the bearing trees, and then find my line falls East of this corner 53 links, making the true bearing N. 0° - 45' W. a distance of 40.02 chains.

These were the two lines called for in this survey. All lines were transit lines and I used a 500 link chain, using slope measurement

[Signature]
 County Surveyor.

Earl Sumner and J. W. Montgomery Survey.

Legal Notices were sent out to J. W. Montgomery and Earl Sumner six days before I began the survey on Oct. 23rd. 1928, by registered mail.

On the 23rd . day of Oct. 1928, I started the survey, taking as my assistants, N. E. Richardson and W. A. Rachor, as chainmen, Henry Rachor as flagman, Earl Sumner as axman. J. W. Montgomery was there on this day.

I began the survey at the Corner common to Sections 9-10-15-16 in T. 30 S. R. 4 W. W. M. This Corner fell in the South Umpqua River and I set Corner in the river from the witness Corners on the Sections lines, East and South of the true corner. Thence I ran west by needle and at 43.56 chains my line fell 45 links South of the $\frac{1}{4}$ Section Corner between Sections 9 and 16, which I set from the Two old Witness Trees. This line I find after taking a sun observation to be S. 89° - 58' W. 43.56 chains.

Thence I ran North by needle on the $\frac{1}{4}$ section line and at transit point 21 I take a sun observation and find my line to be N. 0°-54' W., thence I continue line and at 80.00 chains, I set the $\frac{1}{4}$ Section Corner between Sections 4 and 9 from a Black Oak Bearing Tree, S. 86° W. 1010 links. So the true bearing and distance of $\frac{1}{4}$ section line was N. 3°-15' E. 80.476 chains

Thence I go to the Section common to Sections 9-10-15-16 and ran N 0° - 04' W. 78.99 chains, my line fell 2.065 chains west of the Section Corner common to Sections 3-4-9-10. This line according to the Government field-notes has a bearing of S. 1°- 30' W for 39.69 chains to the $\frac{1}{4}$ Section corner and thence S. 0° -47' W. for 39.19 chains. My distance was a total

" OVER "