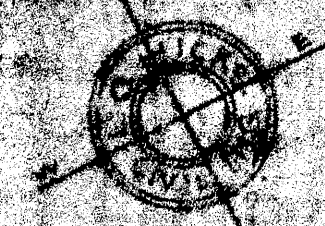


HIGH SCHOOL TRACT ROSEBURG ORE.

SCHOOL DISTRICT No 4.



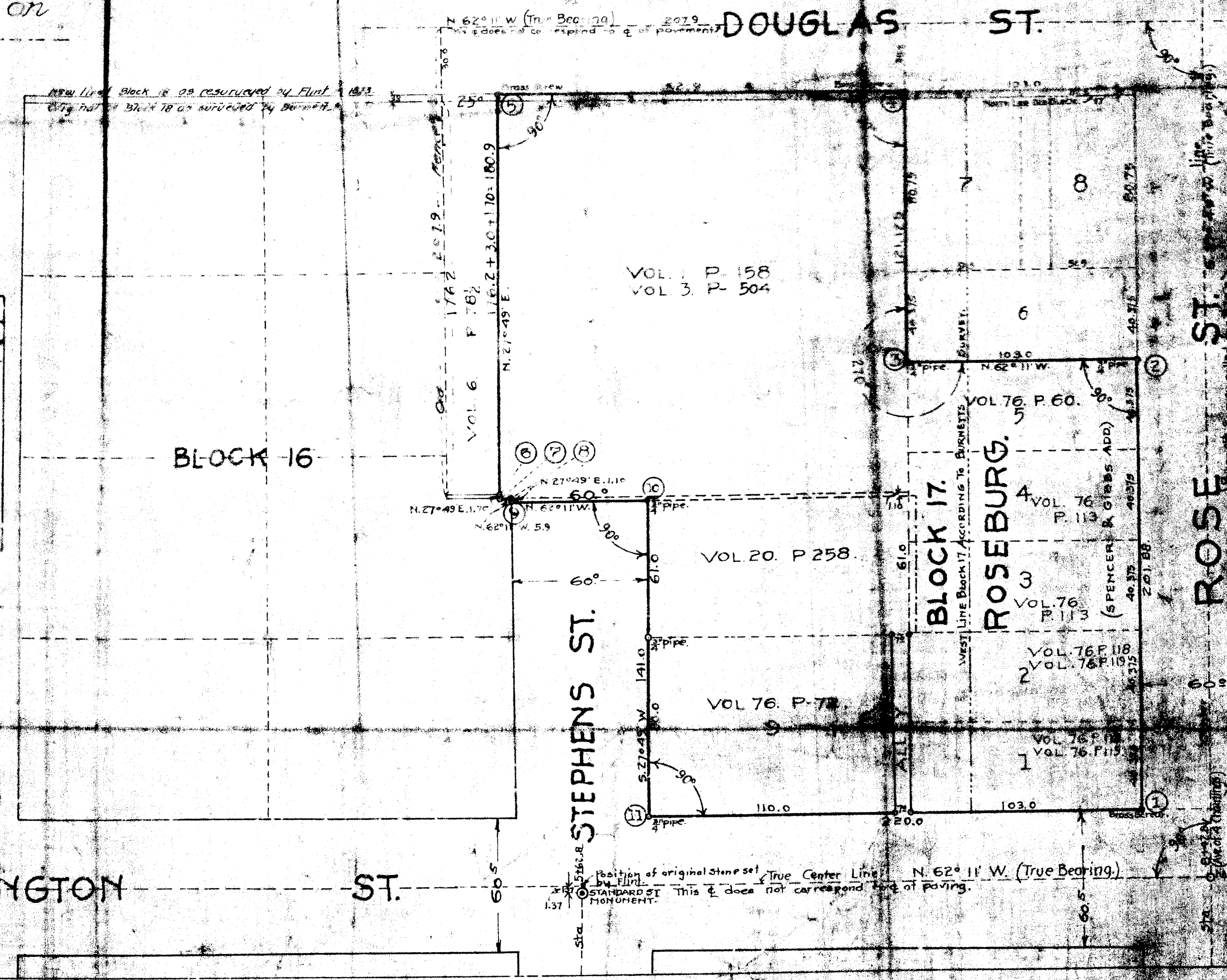
Key shown between Lots 1-2 and 9 in Block 17 vacated by an Ordinance of City Council of Roseburg, Oregon on Ordinance No 668

HIGH SCHOOL TRACT			
STATION	COURSE.	DISTANCE.	DESCRIPTION OF CORNER.
1	N. 27° 49' E.	201.88	BRASS SCREW IN WALL.
2	N. 62° 11' W.	103.00	1/2" PIPE.
3	N. 27° 49' E.	121.125	1/2" PIPE.
4	N. 62° 11' W.	182.90	BRASS SCREW IN WALK.
5	S. 27° 49' W.	179.20	" " "
6	S. 27° 49' W.	1.70	1/2" PIPE.
7	S. 62° 11' E.	5.90	1/2" PIPE.
8	S. 27° 49' W.	1.10	IRON ROD.
9	S. 62° 11' E.	60.00	1/2" PIPE.
10	S. 27° 49' W.	141.00	1/2" PIPE.
11	S. 62° 11' E.	220.00	1/2" PIPE.

Hereby certify that I have surveyed the HIGH SCHOOL TRACT as shown on the accompanying plat and have set the corners as indicated.

L.G. Hicks
Civil Engineer

SCALE 1 IN = 40 FT.



ROSEBURG ST.

WASHINGTON ST.

STEPHENS ST.

DOUGLAS ST.

Position of original stone set by Flint. This does not correspond to center line of paving. True Center Line N. 62° 11' W. (True Bearing)