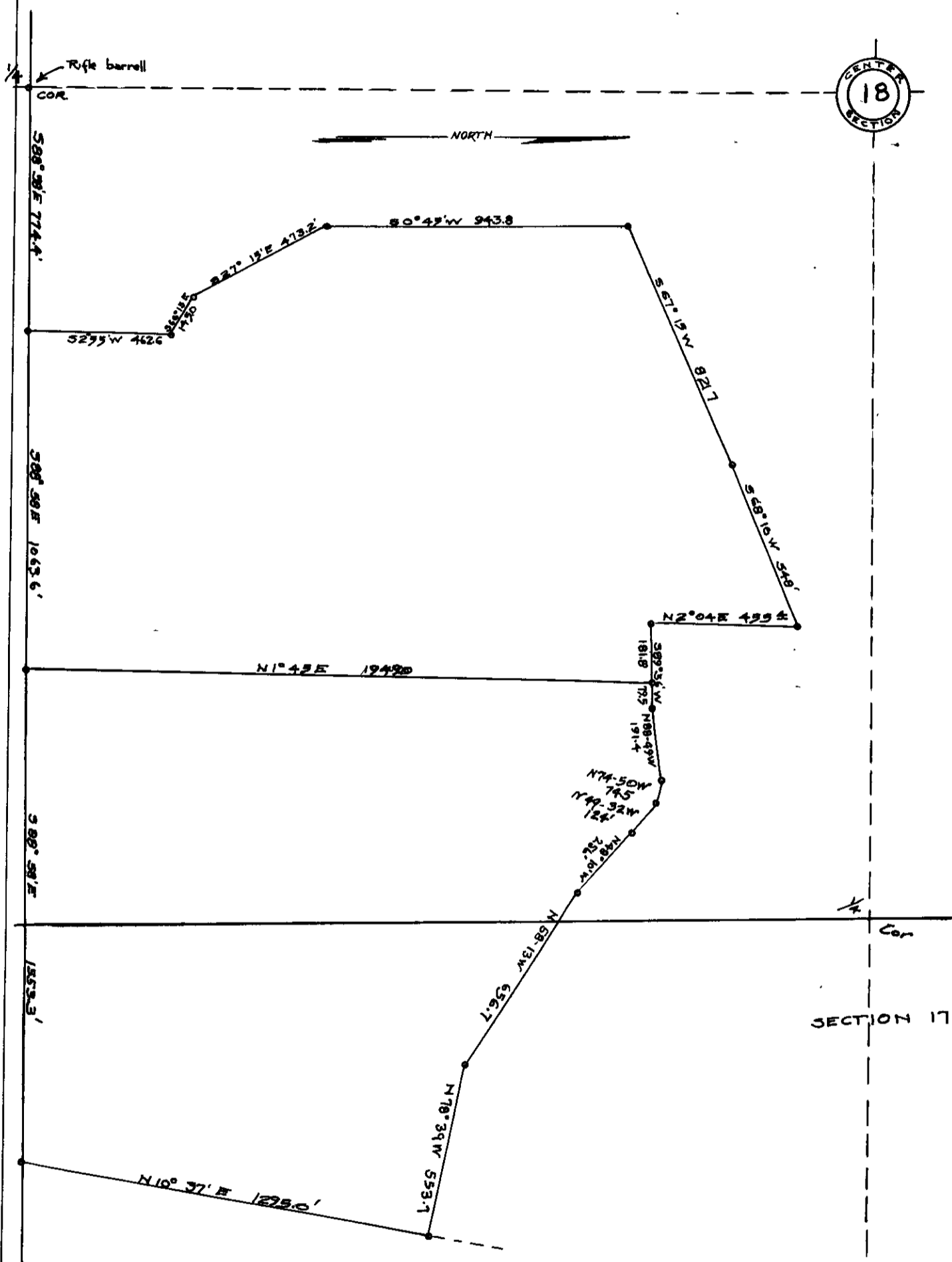


219

COUNTY SURVEYOR'S RECORD, DOUGLAS COUNTY, OREGON

BUSHONG & CO. PORTLAND, ORE. 87345

Survey No. 3-16 Made on Oct 26-1925 In Town. 26 Range 3 Sec. 17-18 Made for BOND BROS. Purpose of Division of property & Descriptions	Survey No. Made on In Town. Range Sec. Made for Purpose of
C.S. 3/16 M6-27 FN L.L.	



Survey by W.H. Woods

A traverse was run around the tract, and a division line run approximately dividing the tract in half. Bearings are true, being obtained by obs. on the sun. Descriptions were prepared. Acreage calculated by double meridian distance method.

Calculations and copy of descriptions in 3-16 (C.S. 3/16)

Record. by. Morris Bowker