

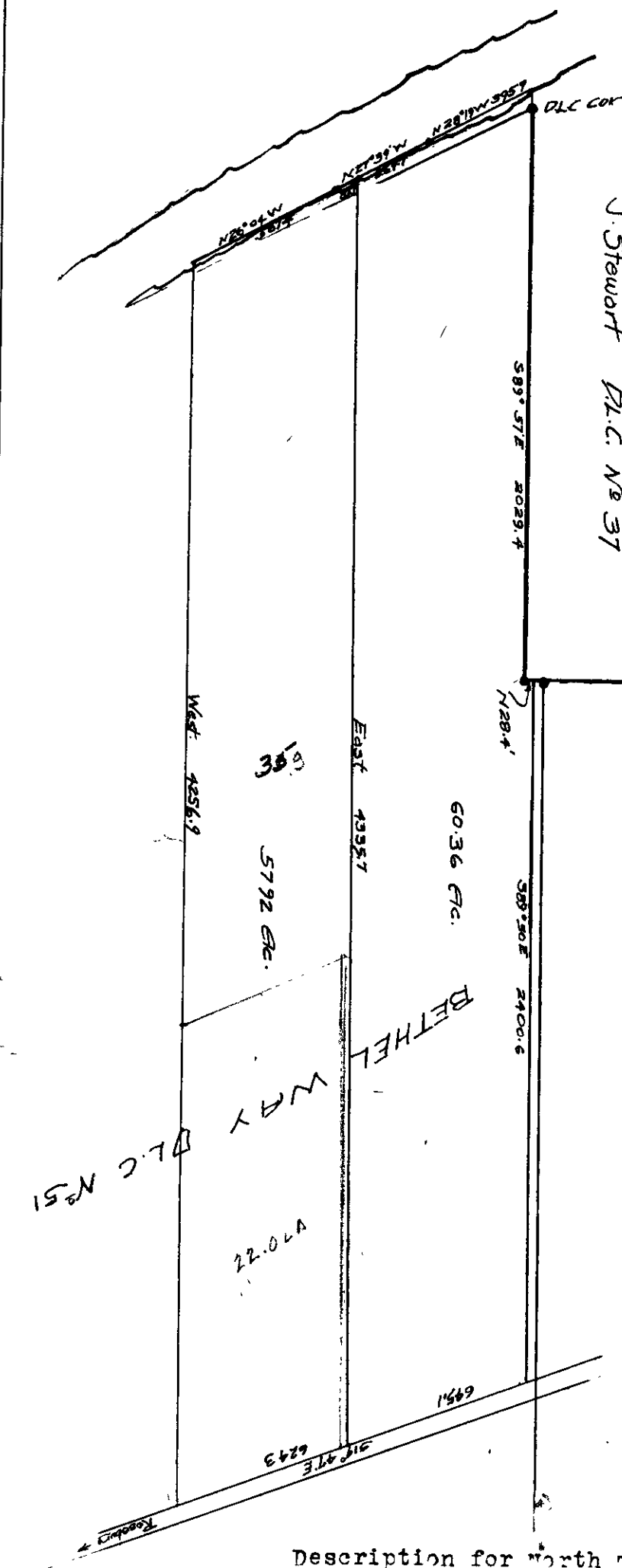
# 213

## COUNTY SURVEYOR'S RECORD, DOUGLAS COUNTY, OREGON

BUSHONG & CO. PORTLAND, ORE. 87545

Survey No. <b>3-8</b> Made on <b>Sept-10-1925</b> In Town. <b>27</b> Range <b>6</b> Sec. <b>3-4</b> Made for <b>Geo. Weber</b> Purpose of <b>Division of tract &amp; Description</b>	Survey No. _____ Made on _____ In Town. _____ Range _____ Sec. _____ Made for _____ Purpose of _____
-----------------------------------------------------------------------------------------------------------------------------------------------------------------------------------------------	---------------------------------------------------------------------------------------------------------------

F.N. "L.L."



J. Stewart D.L.C. No 37

Survey by Epstein  
 A traverse was run around the tract and deed descriptions were made approximately dividing the tract with an east and west line into two equal parts.  
 Accurate by double meridian distance

calculations and field notes and descriptions in env. 8 vault 3

**Description for south tract**  
 Beginning at a point on the west right of way line of the county road 4548.8 feet east and 587.4 feet south of the N.W. corner of D.L.C. No. 51 and the S.W. corner of D.L.C. No. 37, T. 27 S. R. 6 W. Douglas County, Oregon, thence following the west ~~right~~ line of said county road S 19°47'W 624.3 feet, thence west 4,256.9 feet to the center of the south Umpqua river, thence following the center of the said river W 26°04'W 567.4 feet and W 27°39'W 87.7 feet, thence east 4335.7 feet to the place of beginning containing 47.92 acres more or less all in section 3 and 4 of T. 27 S. R. 6 W.

**Description for north tract**

Beginning at a point 100 feet west of the north-west corner of D.L.C. No. 51 and the South west corner of D.L.C. No. 37 T. 27 S. R. 6 W. Douglas County Oregon, thence south 89°57'E 2029.4 to the interior L corner of D.L.C. No. 51, thence north 28.4 feet to the south line of a private Road, thence following the south line of said road S 89°50'W 2400.6 feet to the West right of way line of the county road, the following said line South 19°47'E 645.1 feet, thence west 4335.7 feet to a point in the center of the south Umpqua river, thence following the center of the south Umpqua river north 27°31'W 269.7 feet, and North 28°19'West 395.9 feet to the place of beginning, containing 60.36 acres more or less, all in sections 3 and 4 of T. 27 S. R. 6 W.

Record M.C. Bowker