

# COUNTY SURVEYOR'S RECORD, DOUGLAS COUNTY, OREGON

BUSHONG & CO. PORTLAND, ORE. 87545

<p>Survey No.                      Made on Feb. 18, 19, 20, &amp; 21                  In Town. 26 S.    Range 3W.    1925.    Sec. 11</p> <p>Made for M.L. Kimmel, Earl Vosburg, &amp; Charley Vleck.</p> <p>Purpose of Establishing <math>\frac{1}{4}</math> section line through section 11, and laying off 40. acres being E. <math>\frac{1}{2}</math> of E. <math>\frac{1}{2}</math> of the N.W. <math>\frac{1}{4}</math> of section 11.</p> <p>H.L. Eppstein Surveyor.                  W.S. Greaf, chainman</p> <p>C.S. 140-3</p>	<p>Survey No.                      Made on</p> <p>In Town.                      Range                      Sec.</p> <p>Made for</p> <p>Purpose of</p>
---	---

I began survey at the  $\frac{1}{4}$  corner between Section 2 & 11. T. 26 S. R. 3 W. W. M. From this corner I ran a transit line S. 0° 15' W. using a variation of 21° 15' E. with the needle. ( could not see the sun for observation ) a distance of 5285.6 feet; here I made an attempt to find the  $\frac{1}{4}$  section corner between sections 11 & 14, but could not find said corner.

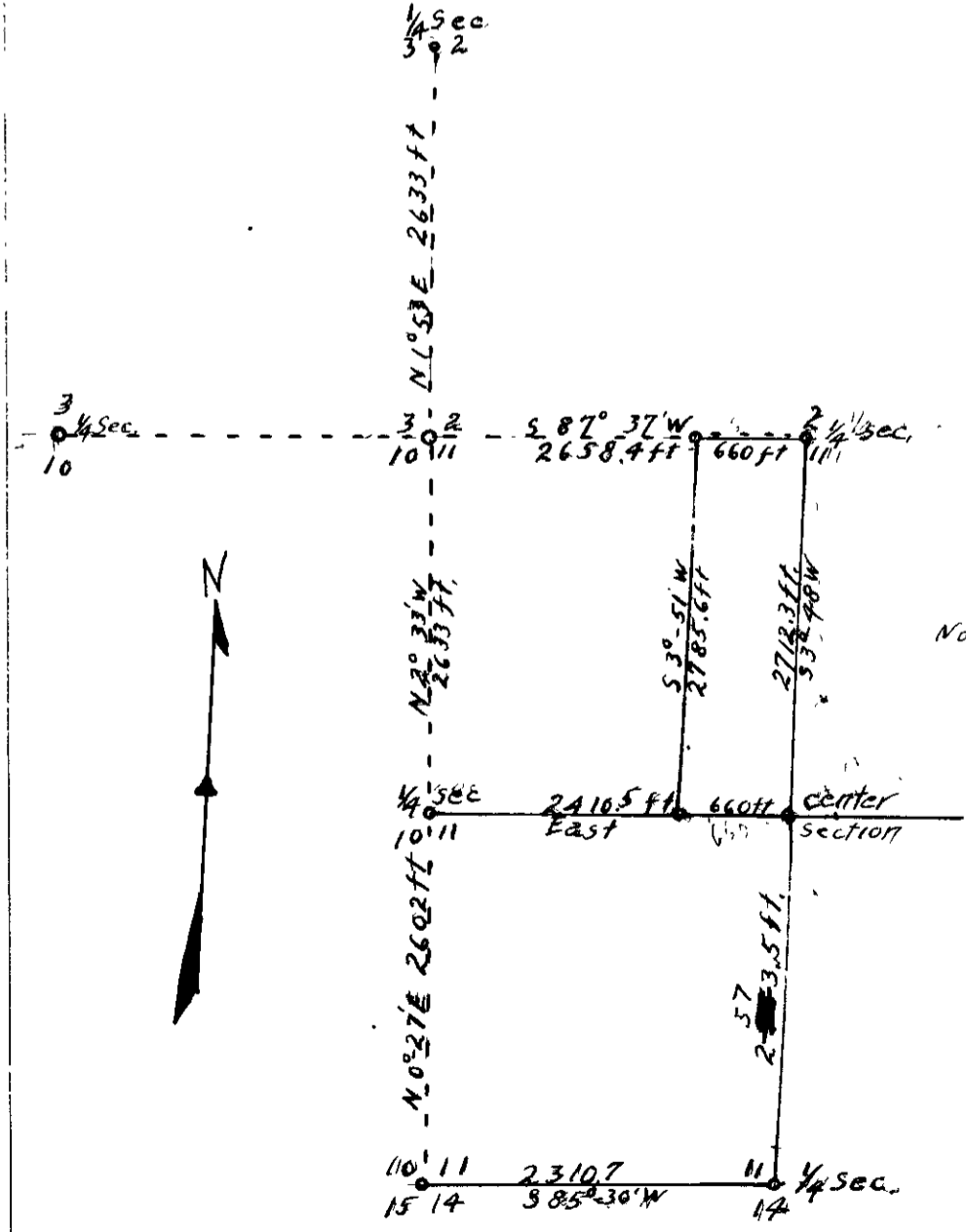
I then ran on from my line, with angles and distances to the section corner common to sections 10, 11, 14 & 15; which was in place. I then compute the location of the  $\frac{1}{4}$  corner between sections 11 & 14 and from the computation I find the old B. T. as called for in the Government field notes and then set  $\frac{1}{4}$  section corner.

I find this corner to be N. 88° 59' " 304.4 feet from my line at the place where I had ran a distance of 5285.8 feet. I then compute the true line and find the length to be 5288.6 feet and bearing S. 3° 48' W. and then set stakes on the true line through section. In getting the new bearing I turned an angle from my line at the  $\frac{1}{4}$  section corner between section 2 & 11 to Cole's line, which still had hub in place, west from the  $\frac{1}{4}$  corner and the bearing on this line of Coles was from sun observation.

I then go to Cole's witness corner to the  $\frac{1}{4}$  section corner between sections 10 & 11 and run East by needle ( no sun ) , turning an angle of 92° 33' from Cole's line, which bears N 2° 53' W. a distance of 2410.5 feet, where I intersect the true line running N. & S. through the section a distance of 2712.3 feet from the  $\frac{1}{4}$  section corner between sections 2 & 11. This point was taken as Vleck S. E. corner. I then set a stake back on this line for Vleck S. W. corner. I then go to the  $\frac{1}{4}$  corner of sections 2 & 11 and using Cole's line I measure West 660 feet for the N. W. corner of Vleck. the bearing of this line as shown by Coles work is S. 87° 37' W. Thence I ran S. 3° 51' W. 2785.6 feet to the S. W. corner of Vleck land as previously set.

Cole's survey is recorded on pages 163 & 4 Vol. 3

The weather was Cloudy and rainy.



Note.  
 Red Line run by Eppstein  
 Black " " " Cole.