

182 COUNTY SURVEYOR'S RECORD, DOUGLAS COUNTY, OREGON

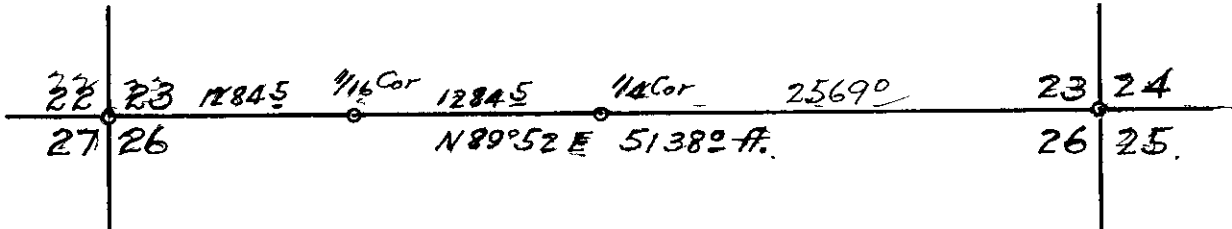
BUSHONG & CO. PORTLAND, ORE. 87545

<p><i>Survey No.</i> <i>Made on</i></p> <p><i>In Town.</i> <i>Range</i> <i>Sec.</i></p> <p><i>Made for</i></p> <p><i>Purpose of</i></p>	<p><i>Survey No.</i> <i>Made on</i></p> <p><i>In Town.</i> <i>Range</i> <i>Sec.</i></p> <p><i>Made for</i></p> <p><i>Purpose of</i></p>
--	--

DESCRIPTION OF J.E.REEVES CONT'D

I then established the one quarter corner on the true line between Section corners and set a one inch x 40 inch drill steel ,also a fir post properly marked for the one quarter corner and marked a ledge rock, $\frac{1}{4}$ CS, B0 which bears S64°00'W 70.0 ft. and a fir tree 36 in dia ,marked with two notches on the East and West faces ,stands 14 ft West of the corner.

I established the one sixteenth corner on the North boundary of the North West one quarter of Section 26, by setting a one in. x 40 in. drill steel and marking trees .A 24 in fir S43°15'E 6.8 ft. and a Fir 22 in dia N15°20'E 26.7 ft. I also set similiar drill steels on the true line at points 1115.0 ft. and 1236.7 ft and 1596.7 ft. East of the beginning point to mark the Section line where it passed over a ledge of mineral ore.



I renewed the corner of Sections 23-24-25-26 from the original bearing trees which I identified ,I set a rock mound for the corner and also a one inch x forty inch drill steel, did not mark new trees as this area had been badly burned and no suitable trees convenient.