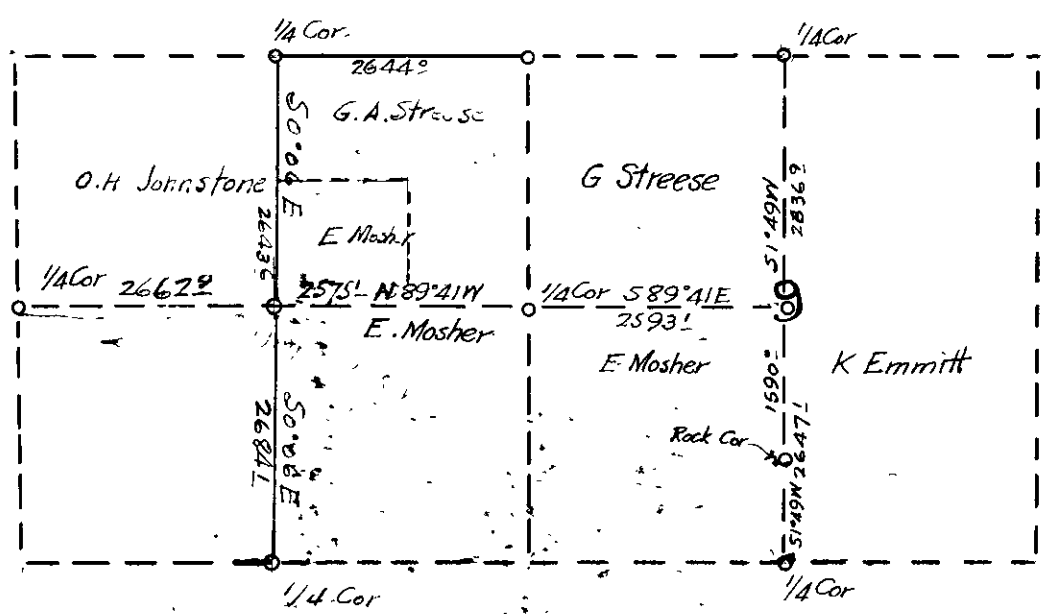


COUNTY SURVEYOR'S RECORD, DOUGLAS COUNTY, OREGON

RUSHOR & CO. PORTLAND, ORE. 87545

Survey No. 1	Made on Jan 28 1924	Survey No.	Made on
In Town. 25 3	Range 7 3	Sec. 9	
Made for Ed Mosher-Kerney Emmitt-Geo. Streese.		Made for	
Purpose of To Establish the true one quar. line North and South through Sec. 9		Purpose of	
Jesse Cole--Surveyor			
Ed Mosher-Kerney Emmitt- Marion Emmitt			
Geo Streese- Herman Streese. Pres nt.			

F.B. 300-52



STATE OF OREGON

COUNTY OF DOUGLAS

I, Jesse J. Cole, County Surveyor for Douglas County Oregon, do hereby certify that heretofore and to-wit: On about Dec 30 1923 AD, I received a written request from Geo J Streese and Kerney Emmitt, to make a level survey, to establish the North and South Quarter line through Section 9 T 25 S R 7 W, in Douglas County, Oregon, that therefore on the 17th day of January 1924, I caused notice of my intention, to survey the said line, to be forwarded by registered mail to Ed Mosher, and that the date named for the survey in said notice was Jan 30 1924 AD, and that on the 31st day of January 1924 I began the survey, that I had assisting me Ed Mosher, Kerney Emmitt, Geo Streese, Herman Streese, and Marion Emmitt, that I measured all angles with the transit plates, and measured all distances with a 300 ft. steel tape, making slope measurements and reducing to horizontal measure by the tables of Cosines, that I read the tape myself in nearly all cases, that all calculations were made by latitudes and departures and the courses of all lines were determined by using a Variation of, 21° 45' which was an assumed variation, there being no sun during the survey, that the lines were run as random traverse lines and the true line marked by large hubs and trees well blazed.

Dated this --- day of February 1924 AD.

DESCRIPTION OF SURVEY

I began the survey at the corner on the North boundary of Sec 9 above township and range, which I renewed from the original Bearing trees which were still standing and alive, the Laurel bore scars which I chopped out but the scribe marks had decayed from the surface, the final Bearing had been burned lightly and no scribe marks showed. I set an Oak post 4"x4"x36" from which the original trees, which I remarked, checked very closely with the government field notes, hence I ran South on a random traverse line and tied to a transit line previously run, by me during December 1923 for Kerney Emmitt and Ed Mosher, this line had been run from the approximate center of Section 9 to the one quarter cor on the South boundary of Sec 9, and both Mr Emmitt and Mr Mosher agreed that they were willing for me to use this line in connection with this survey, as they had both been present when this line was run, from the random traverse line thus run I computed the direction and length of the true one quarter line, to be 21° 49' N 5,284 and I corrected the random line accordingly, I set a Laurel post 3x3 inches from which a Fir tree 8" dia bears 372° 20' E 14.1 ft. at a point on the true one quarter line where it was intersected by a line previously run for Ed Mosher and Geo Streese, I also set a rock 8"x8"x16" from which a Fir tree 16" dia. bears 367° 15' E 21.0 ft., on the North bank of the Umpqua river, to designate the place where the quarter line intersected the river.