

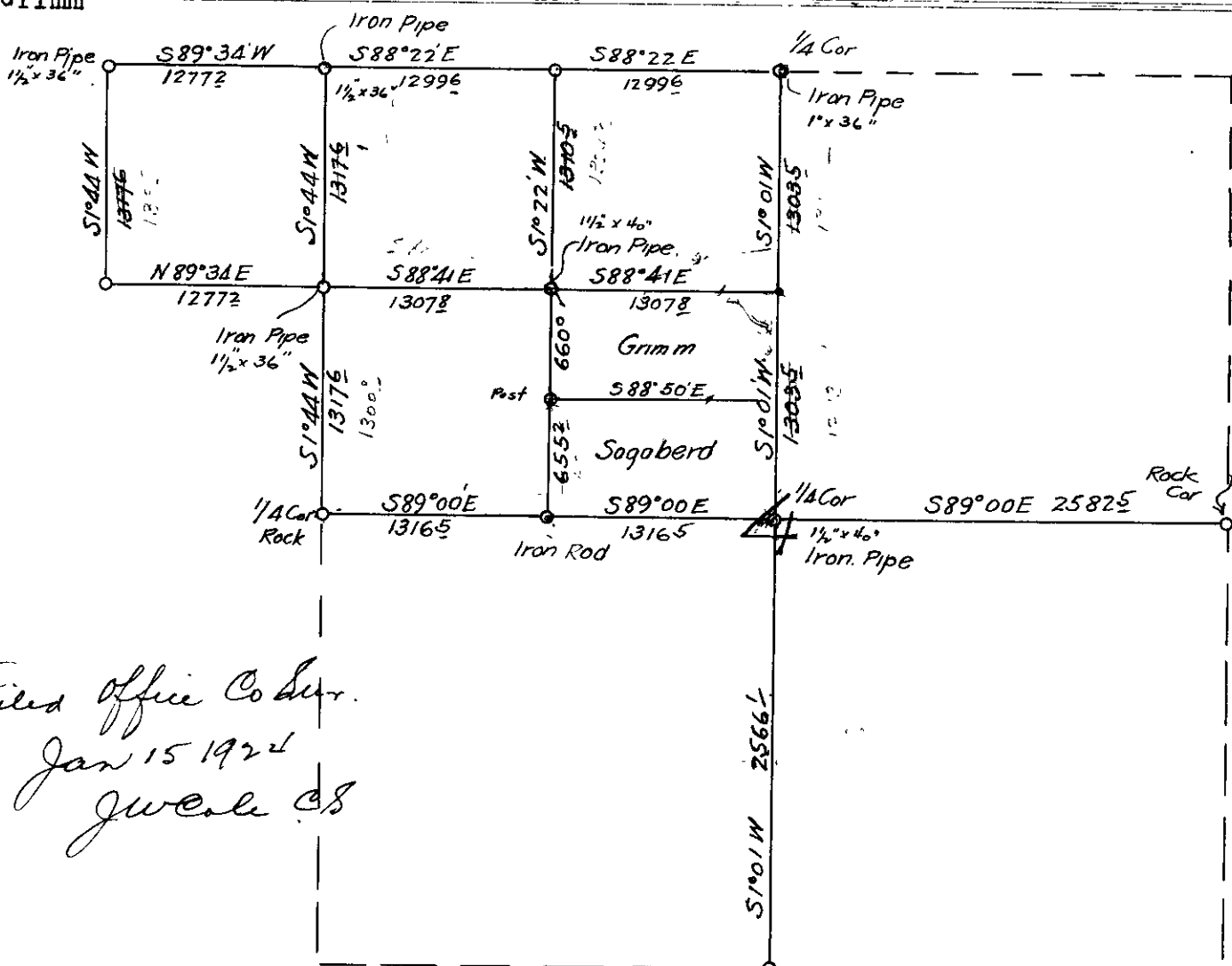
176

# COUNTY SURVEYOR'S RECORD, DOUGLAS COUNTY, OREGON

BUSHONG & CO. PORTLAND, ORE. 87545

F.B. 300-52 Pgs. 18-26 C.S. 1/13

Survey No.	Made on	Began	Jan 4 1924	Survey No.	Made on	
In Town.	22 S Range	5 W	Sec. 4 & 5	In Town.	Range	Sec.
Made for	W.C. Sagaberd and J Grimm			Made for		
Purpose of	determining the boundaries of their properties.			Purpose of		
	J.W. Cole; County Surveyor					
	W.A. Sagaberd					
	J. Sagaberd					
	J. Grimm					
	Helpers.					



*Filed Office Copy  
Jan 15 1924  
J.W. Cole*

I began the survey at the corner to Sections 32-33 4-5 on the South Bdy of Town. 21 South Range 5 W east of the W.M. Douglas Co. I found a post properly marked and Bearing trees marked by Floyd J Cole ,I set an iron pipe 1 1/2 x 36 beside the post, Thence I ran West on a random traverse line with an assumed variation of 21°30'E measuring slope measure with a 300 ft tape and all angles measured with the Vernier and doubled.

I intersected the 1/16 corner as Set by Floyd J Cole ,the bearing trees were cut but the stumps standing and bearing Scribe marks. I set an Iron pipe 1 1/2 x 36 beside post, Thence I ran along the approximate South and West boundaries of the NW 1/4 of Sec 5 ,and thence South to the 1/4 corner between Sections 4-5. This corner had been renewed by M.B. Germond several years before, but I could find no record of it in the County Surveyors Office, The corner as renewed is a sand stone marked 1/4 S ,CS from which a Fir 10" in dia S21°W 14.4 ft. A fir 12 in dia N 24°30'E 13.5 ft. Stump of what might have been an old BT N72°E 63.ft. no trace of other old BT., Thence I ran East approximately 1/4 mile and laid out a base line for triangulation. I then went to the 1/4 cor on the North boundary of Section 4 and renewed that corner from the Stumps of the Original bearing trees, which checked for position but bore no Marks as they were badly decayed, I set an Iron pipe 1 x 36 for the corner and marked A W Oak 10 in dia S50°50'W 140.9 ft. I set up a flag at this corner and triangulated to it from hubs on the approximate East end West 1/4 line, I also set up a flag at the 1/4 corner on the South Boundary of Section 4 and triangulated to it from the same position, I then continued Easterly through Section 4 by triangulation and direct measurement to the 1/4 corner on the East boundary of the Section, which I renewed from One Original Bearing tree which had been chopped open but the scribe marks had rotted off, I also found a fir post at this corner which Mr Germond presumably set, I set a 5x10x16 Sand stone marked 1/4 S CS from which I marked a new tree A Fir 12 in dia S5°E 12.0 ft. The Old BT bears N 45°W 93.0 ft. I then computed the position of the Legal center of the Section and Set a 1 1/2 x 40 Iron pipe for the corner from which A Maple 10" dia 370°W 3.0 ft. and A fir 16 in dia ,Marked by Germond for a BT to the center of the Section as set by him, bears North 112.6 ft. and East 12.6 ft. I could find no trace of the corner as set by Germond nor a record of it. I then divided the North West 1/4 of Sec 4 as shown and set the pipes shown on the sketch. The lines between Grimm and Kruzen ,and Grimm and Sagaberd were run from the West boundary of their places to the county road without measuring them. The Iron rod on the South boundary of the NW 1/4 is buried 10" below the surface of the ground 69.0 ft. South of the old fence line

There was no sun during the survey ,clear enough for solar observation. The lines as surveyed between Grimm and Kruzen was approximately 120 ft. North and parallel with the existing fence, The line between Grimm and Sagaberd had a similar relation.