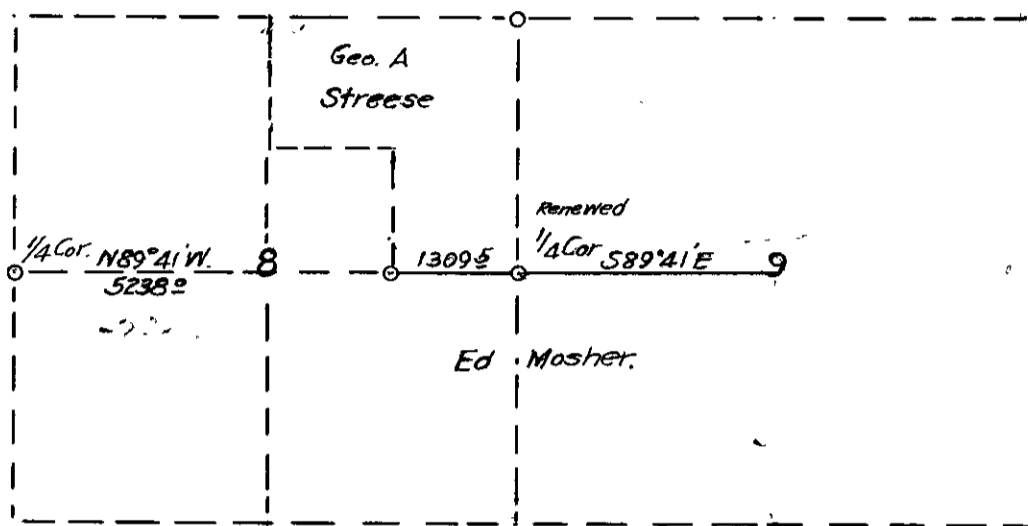


175

COUNTY SURVEYOR'S RECORD, DOUGLAS COUNTY, OREGON

BUSHONG & CO PORTLAND, ORE. 87545

| | |
|--|--|
| <p style="text-align: center;">Dec 18-19 23</p> <p>Survey No. Made on</p> <p>In Town. Range Sec. 8-9</p> <p>Made for Geo A Streese and Ed Mosher</p> <p>Purpose of to establish boundary line</p> <p> J.W. Cole -- Surveyor</p> <p style="text-align: center;">Variation Assumed 71°45'</p> <p style="text-align: center;">No Sun</p> <p style="text-align: center;"><i>c.s. 2/25</i> FB. 300-52</p> | <p>Survey No. Made on</p> <p>In Town. Range Sec.</p> <p>Made for</p> <p>Purpose of</p> <p style="text-align: center;"><i>Filed in Co Surveyors Office</i></p> <p style="text-align: center;"><i>Dec 29 1923 J.W. Cole</i></p> |
|--|--|



I began the survey at the corner between Sections 8 and 9 which I renewed from the Original Boring trees which were both standing and bearing scars but nearly dead. I set an Iron pipe 1 1/2 x 24 inches and a cedar post properly marked for the corner, from which

Old Bt, a 30 inch Oak S10°E 191.4 ft.

" " a 15 inch Oak N1°30' 334.0 ft.

Marked New trees

" " Oak 12 in dia S47°E 109.7 ft.

" " Oak 16 in dia S64°15'W 81.8 ft.

Hence I ran west on a random traverse line and at 5238.0 ft I intersected 27.8 ft. South of the corner between Sections 8 & 9. Both witness trees were standing but the marks were not visible but the trees checked closely for position, and the corner falls in the edge of the river, I set a witness corner by making a mound of rocks 49.3 ft. North of the true corner and marked a Myrtle 10" in dia S66°W 13.2 ft. and a Myrtle S75°30'E 23.3 ft.

I computed the true line as N89°41'W 5238.0 ft. and at a point N89°41'W 1309.5 ft. I set an iron pipe 1 1/2 x 24 inches from which a 24" Oak 24 in dia S21°E 18.6 ft. Marked CS BT, as corner for the property of G.A. Streese and Ed Mosher.

I then returned to the corner between Sections 8 & 9 and ran S89°41'E approximately 2640 ft to mark the approximate line East and West through Section 9 which Mr Mosher and G.A. Streese agreed to, in writing as their property line

The agreements shown below were reduced to writing and are recorded in the Surveyors Office in Field Book No 300 pages 6 and 12

" We the undersigned property owners, hereby agree to accept as a property line, the line surveyed and marked on the ground by J.W. Cole, Dec 20 1923 and described as follows -- Beginning at the corner between Sections 8-9 T 25 S R 7 W N, hence N89°41' 1309.5 ft. to an iron pipe 1 1/2 x 24 inches, from which an Oak tree 24 inches in dia marked CS BT bears S 21°E 18.6 ft., hence North approximately 1320.0 ft.

| | |
|--|--|
| <p>Witnesses</p> <p>Herman Streese</p> <p>-----</p> <p>J. W. Cole</p> <p>-----</p> | <p>Signed</p> <p>Ed Mosher</p> <p>-----</p> <p>Geo. A Streese</p> <p>-----</p> |
|--|--|

" We the undersigned property holders hereby agree to accept as a property line a line surveyed by J.W. Cole, Dec 20 1923 and described as follows "Beginning at the corner between Sections 8-9 T 25 S R 7 W N, hence S89°41'E to its intersection with the North and South line through Section 9

| | |
|---|--|
| <p>Witnesses</p> <p>J.W. Solomon</p> <p>-----</p> <p>J.W. Cole</p> <p>-----</p> | <p>Signed</p> <p>Ed Mosher</p> <p>-----</p> <p>Geo. A Streese</p> <p>-----</p> |
|---|--|