

145148

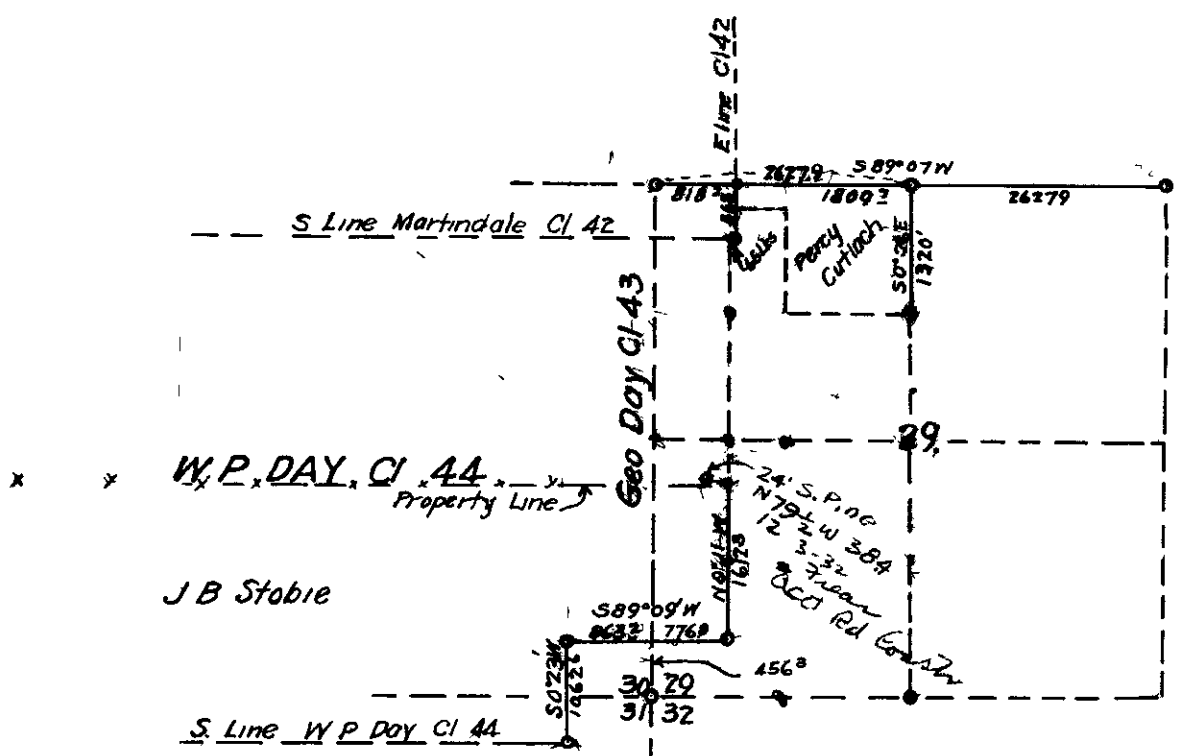
COUNTY SURVEYOR'S RECORD, DOUGLAS COUNTY, OREGON

BEERSON & CO. PORTLAND ORE 87545

Survey No. NO 1 Made on April 23 1923 In Town. 29 3 R Range 8 7 Sec. 29 Made for Percy Cutlach at the request of J C Nicewood Purpose of To Establish the North and East boundary of Cutlach's land	Survey No. No 2 Made on April 23 1923 In Town. 29 3 Range 8 Sec. 30 Made for J B Stobie D L C 'o's 43 44 Purpose of To Establish the East boundary
--	--

EN "LL"

EN "LL"



NO 1 SURVEY FOR PERCY CUTLACH

I began this survey at the Cor to Sections 20-21-28-29 T 29 S 3 R 7 and renewed this corner from the Original bearing trees and cedar and fir line tree called for in the field notes, the Laurel bearing trees were missing

I set a cedar post 4"x4"x36" for the corner from which the Original's A Fir bearing scribe marks bears N22°E 50 lks A fir 15" in dia which I did not open bears S27°E 48 lks Stump of cedar 30' in dia bears North 25 lks Large fir line tree down, bears North 30 lks, shows line blazes

Marked new trees A Fir 26" in dia 349°15' / 410 ft A Chincapin 30' in dia S66°E 470 ft Thence I ran S88°42' 645 1 ft Thence S89°24' 613 2ft. Thence S88°44' 525 3 ft Thence S89°04' 354 8 There I took a solar Observation for directions as follows Set at hub no 5, back sight on no. 4 and deflect left 13°37' to the sun whose measured altitude was 32°30' at 4,00 O'clock P.M. April 23 1923 the magnetic Course to the sun was S76°45' with an assumed variation of 21°35' E

The apparent Dec. of the sun Greenwich noon for latitude 12°16'46.2" Hourly change 50' 30" and for 12 hours 10' 03"

Declination at time of observation	N12°06'49"
Latitude of Roseburg N43°13'	N43°13'
Correction for one mile 869' and for 13 miles	11'

Latitude of Observation	N43°02"
Measured altitude	32°30'
Refraction for 4 hrs	0°01'

Corrected altitude	32°29'
From formula Cos C, Tan Alt x tan Lat - (± sin Dec x cosec Alt x cosec Lat.)	
	.6357 x 9336 - (2156 x 1855 x 13677) = 92448

2448 ss Cos of bearing of sun or 375°50' Deflection angle turned from sun to line 13°37' direction of line S89°27' Thence S89°27' 560 5 ft to Hub No 6 which is temporary 1/4 Corner Thence S89°17' 1820 3 ft to a point in the county road 25 ft west of the center line of same Thence S89°13' 792 3 ft Thence North 40 ft. to the corner of Sections 19-20-28-30 which I renewed from old bearing tree alive and standing bearing front scribe marks, the direction and distance from corner to tree would bring corner 9 ft south of the line of fence which had the appearance of having been the line for many years, I placed the corner on line with fence and marked new trees A Pine 24' in dia (In SE corner of the cemetery) N32°E 537 0 ft A Pear tree 10' in dia hrs S31°30' 164 0 ft A Fir 20" in dia hrs S41°45'E 730 ft an Iron pipe 1 1/2"x36" bears S89°07'E 453 0 ft on the east boundary of the Coast Highway The section corner is a 1 1/2"x36" Iron pipe 16' below the surface of the ground. The true line between Sections corners I computed as N89°07' 5255 8 ft I then returned to temporary 1/4 corner and move it East 12 4 ft and North 4 0 ft and set an Iron mower pitman for the corner and marked trees

A Fir 18' in dia hrs S77°20' 174 3 ft Sugar Pine 26" dia N62°40'E 150 0 ft There was no evidence of the old corner or trees to be found I then ran S0°00'E 1320 ft and set an approximate 1/16 corner from which A B Oak 14" in dia bears 19°15'E 34 0 ft