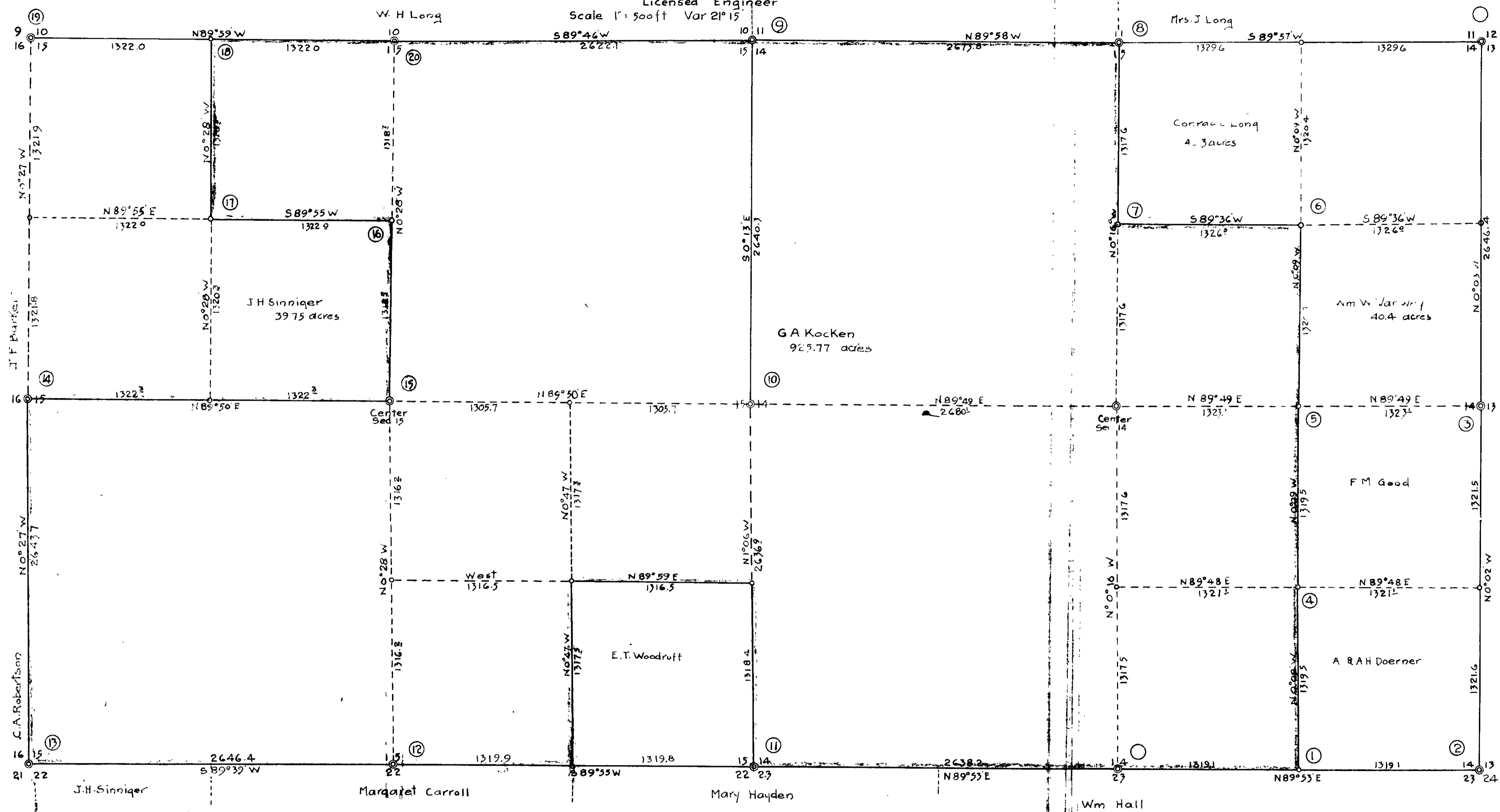


Legal Survey of Sec. 14 & 15  
T. 26 S. R. 7 W.

Surveyed by G.G. Stewart, Dec. 1922  
Licensed Engineer  
Scale 1" = 500ft Var 2° 15'

TRACING  
IN M2-8



Description of Corners			
Cor	Set	Witness Trees	
1	1/16 Stk	18' Fir	S 36° E 23 <sup>5</sup> ft
2	Section Pipe	12' B.O	N 16 <sup>1</sup> / <sub>2</sub> ° W 159 <sup>3</sup>
		18' B.O	N 36 <sup>1</sup> / <sub>2</sub> ° E 176 <sup>5</sup>
3	1/4 Pipe	18' B.O	N 61° W 45°
		18' W.O	N 18° E 39 <sup>2</sup>
4	1/16 Pipe	18' Laurel	N 41° E 34 <sup>2</sup>
5	1/16 Pipe	8' Fir	S 68° E 14 <sup>2</sup>
6	1/16 Stk	12' Fir	N 15° W 7 <sup>5</sup>
7	1/16 Stk	18' Fir	S 55° E 9 <sup>7</sup>
8	1/4 Pipe	18' B.O	N 61° W 119 <sup>3</sup>
		14' Fir	S 43° W 99 <sup>1</sup>
		16' B.O	N 68° W 21 <sup>2</sup>
		24' B.O	S 17 <sup>1</sup> / <sub>2</sub> ° W 60 <sup>5</sup>
		8' Cedar	S 57 <sup>1</sup> / <sub>2</sub> ° E 23 <sup>2</sup>
		4' Laurel	N 71° E 35 <sup>2</sup>
10	1/4 Pipe	30' Fir	N 70° W 24 <sup>5</sup>
		18' Fir	S 46° E 21 <sup>2</sup>
11	Sec. Pipe	30' Fir	N 18° W 27 <sup>2</sup>
		30' Fir	S 63 <sup>1</sup> / <sub>2</sub> ° W 46 <sup>1</sup>
		30' Fir	S 42 <sup>1</sup> / <sub>2</sub> ° E 22 <sup>7</sup>
		12' Fir	East 31 <sup>2</sup>
12	1/4 Pipe	18' W Fir	S 4 <sup>1</sup> / <sub>2</sub> ° W 23 <sup>7</sup>
		10' W Fir	N 54° E 27 <sup>5</sup>
13	Sec. Pipe	24' Hemlock	N 18° E 46 <sup>2</sup>
		20 "	N 37 <sup>1</sup> / <sub>2</sub> ° W 24 <sup>2</sup>
		36' Fir	S 50° W 48 <sup>5</sup>
14	1/4 yew Stk	14' Fir	N 46° E 17 <sup>2</sup>
		14' "	S 27° E 36 <sup>1</sup>
15	1/4 Stk	18' Fir	S 83° W 31 <sup>2</sup>
		16' "	N 42 <sup>1</sup> / <sub>2</sub> ° W 40 <sup>1</sup>
16	1/16 Stk	10' Cedar	S 60° W 23 <sup>2</sup>
17	1/16 Stk	30' Fir	North 6 <sup>2</sup>
18	1/16 Stk	10' Cedar	S 55° W 14 <sup>2</sup>
19	Sec. Pipe	18' Fir	S 88° W 24 <sup>2</sup>
		30' "	S 20° E 27 <sup>2</sup>
		30' "	N 71° E 9 <sup>2</sup>
		20' "	North 21 <sup>7</sup>
20	1/4 Pipe	30' Fir	S 50° W 28 <sup>2</sup>
		30' Fir	N 9 <sup>1</sup> / <sub>2</sub> ° E 28 <sup>2</sup>

# COUNTY SURVEYOR'S RECORD, DOUGLAS COUNTY, OREGON

<p><b>Survey No.</b>                      <b>Made on</b> December 1 1922</p> <p><b>In Town.</b> 26 S      <b>Range</b> 7 W      <b>Sec.</b> 14-15</p> <p><b>Made for</b> G. A. Kocken et al</p> <p><b>Purpose of</b> Legal Survey for corners and fences</p> <p style="text-align: center;">TRACING IN MAP FILE M2-8. EN 44 1/37</p> <p>G. G. Stewart, Deputy</p>	<p><b>Survey No.</b>                      <b>Made on</b></p> <p><b>In Town.</b>                      <b>Range</b>                      <b>Sec.</b></p> <p><b>Made for</b></p> <p><b>Purpose of</b></p>
---	--

I sent Legal Notices by registered mail to E. T. Woodruff, Wm Hall, Margaret Carrol C. A. Robertson, J. F. Barker, J. H. Sinniger, W. H. Long, Mrs. J. Long, C. C. Long Wm Vanwey, F. H. Good, Adam Doerner and Mary Hayden G. A. Kocken and started the survey December 1st, the date set in notices.

In the accompanying map, which is a part of this survey record, the corners are numbered in circles and said numbers also refer to this typed record. I went to the section corner #2 where I found one O.B.T. and I reestablished the corner from this tree drove an iron pipe and witnessed trees as per map notation. This corner is in prune orchard, 33.0 ft South of fence line and 8" below surface of ground. From this corner I ran tacked transit line traverse, doubled deflection angles, to section corner # 11 where I found one old stump and one tree that I assumed were witness trees, as they checked for distance and bearing; No scribe marks visible. I reestablished corner from these two and drove iron pipe and witnessed trees. The quarter corner between sections 14 and 23 is destroyed and I did not reestablish. I continued to 1/4 corner #12 where I found one O.B.T. and one stump. I reestablished corner from these as they checked O.K. with notes and drove iron pipe and witnessed new trees. I continued to section corner # 13 where I found one O.B.T., other trees gone. I reestablished corner by driving iron pipe and witnessing new trees. I returned to starting point and ran to 1/4 corner # 3 where I found both O.B.Ts out open and badly rotted. I reestablished corner by driving iron pipe and witnessing new trees. I continued North and triangulated to section corner between sections 11-12-13-14 which had previously been set and recorded and then continued to 1/4 corner #8 where I found one O.B.T. badly rotted. I reestablished corner by driving iron pipe and marking new trees. From here I continued to section corner #9 where I found stump of tree originally marked for section corner. The tree was blazed on 4 sides but B.Ts gone. I accepted this stump for corner and marked new trees. I continued to 1/4 corner #20 where I found one stump and one O.B.T. I set corner by driving iron pipe and marking new trees. I continued to section corner # 19 where I found one O.B.T. and 2 stumps that checked O.K. I set corner by driving iron pipe and marking new trees. I set sixteenth corner # 18 midway between #19 & #20 set stake and marked tree. I went to corner # 9 and ran to 1/4 corner # 10 where I found one stump with B.T. scribed on it. I set corner from this by driving iron pipe and marking new trees. From section corner # 13 I ran North for 1/4 corner # 14 but could not find this corner so I set new corner by driving yew wood stake and marking new trees, at a point midway between corners #13 & #19. I did not run between # 14 & #19 but computed position from coordinates.

I now had coordinates of all corners necessary to subdivide both sections, so I computed the positions of the sixteenth corners in the interior of the sections and ran to these positions and set corners and marked new trees. I then computed offsets from the traverse lines as run and set stakes for fence line. There had been a survey made of corners #4 & #5 in & #1 in 1884 and recorded but the witness trees had been cut down, evidence of markings destroyed and the positions of the corners as pointed out by property-~~l-nes~~ owners did not check with subdivision of section positions, so I set new corners at these places.

Weather was foggy and dark and no opportunity for solar bearings to be secured. Instrument work and chaining carefully done., using doubled angles and slope measurements corrected to horizontal. Mike Crocker, chainman. Two men of G. A. Kocken acting as back flag and axeman.