

COUNTY SURVEYOR'S RECORD, DOUGLAS COUNTY, OREGON

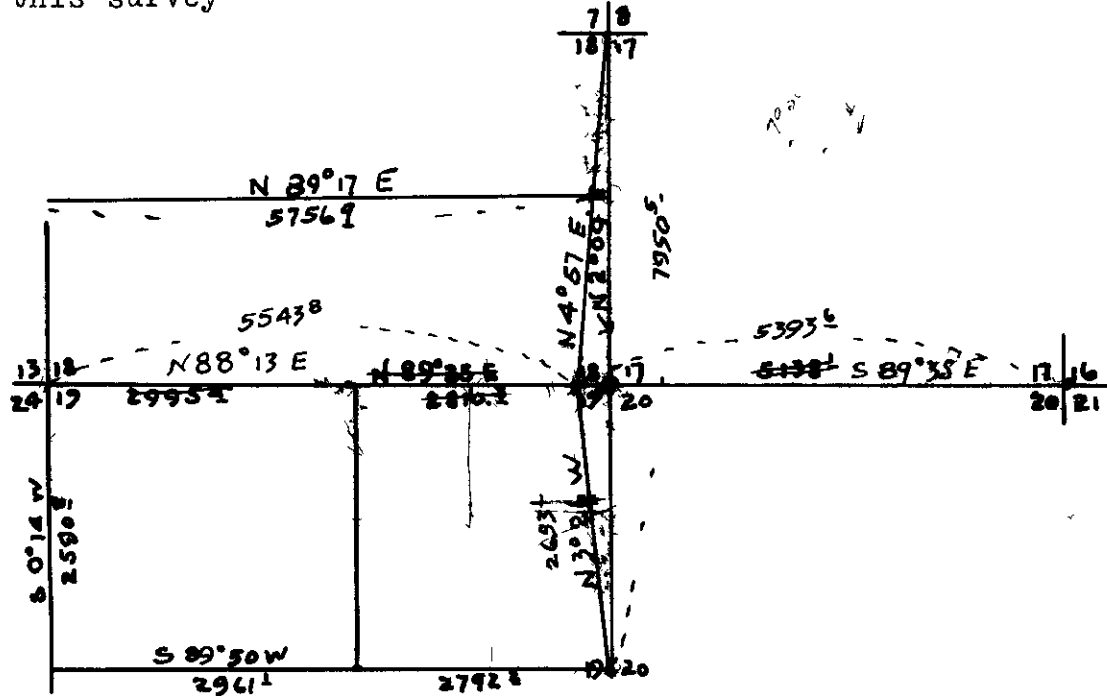
Survey No.	Made on April 11-12 1922	Survey No.	Made on
In Town. 30 S	Range 5 Y	In Town	Range
	Sec. 19		Sec.
Made for J M Yocum and Edwin Weaver,		Made for	
Purpose of Continuing survey on page 104		Purpose of	

G G Stewart, Deputy

EX. 11"

It was decided to set the section corner common to 17-18-19-20 legally and so I started at traverse line that I had run North from the quarter section between 19 and 20 and continued to the section corner common to 7-8-17-18 as set by previous Co Surveyor I compute the length of this line as N 2° 09' E, ~~7850.5~~ ^{7950.5} feet I then placed two hubs on the true line as found, near the location where the corner 17-18-19-20 would come I then continued the traverse line as run East from the corner at NW cor of sec 19 as set Easterly to the corner common to 16-17-20-21 I found one O B T at this location, and as it was Marked S 21, I set the section corner from this ~~point~~ From traverse as run I compute the length of line from the NW corner of section 19 to NE corner of section 20 as ~~line from~~ N 89° 25' E 10943.8 feet I set two hubs on this line and at the point of intersection with the north line as run I set the section corner for 17-18-20-22 Drive an iron pipe and mark

I set the quarter corner between 18 and 19 and drive an iron pipe and mark The location for this corner as set was computed as follows
 40 0 ch 82.64 ch x 5805.7 ft making x equal to 2810.3 feet from NE corner section 19 I take a needle bearing sight from this corner as set South across section 19 and it coincided with an old fence line supposed to run to quarter corner on the South side section 19 This threw the gravel bar to the west of the line and on land owned by J M Yocum A solar observation gave 21° 49' E as the variation, but the needle is not at all reliable in this locality
 The following plat is marked with corrected distances and bearings as found by this survey



Note. Latitude and Departure method used in computations of traverses run but the several traverses were not tied together in bearings Each traverse was started with a needle bearing, as the weather was cloudy and no sun

available. This accounts for apparent errors shown on map.
 The above survey is in error due to wrong field notes being uses for corner 16-17-20-21 Corrected Dec 22 1922 I set this corner correctly from one O B T and drive iron hat and compute length of line to corner 13-18-19-24 to be 10,937.4 ft N 89° 25' E I compute length of line from 1/4 between 19 and 20 to 7-8-17-18 to be N 2° 09' E 7950.5 ft I set stake for corner 17-18-19-20 as per Govt instructions but did not set section corner and mark trees per Mr Weavers wishes Also did not set the 1/4 bet 17-18 for same reason but drove stake for this corner I ran a traverse line from the 1/4 bet 13-18 to the position of 1/4 corner bet 17-18 and compute length to be N 89° 17' E 5756.9 ft giving gravel bar in question to Mr Moore

See page 105

*2761
2792
2793*