

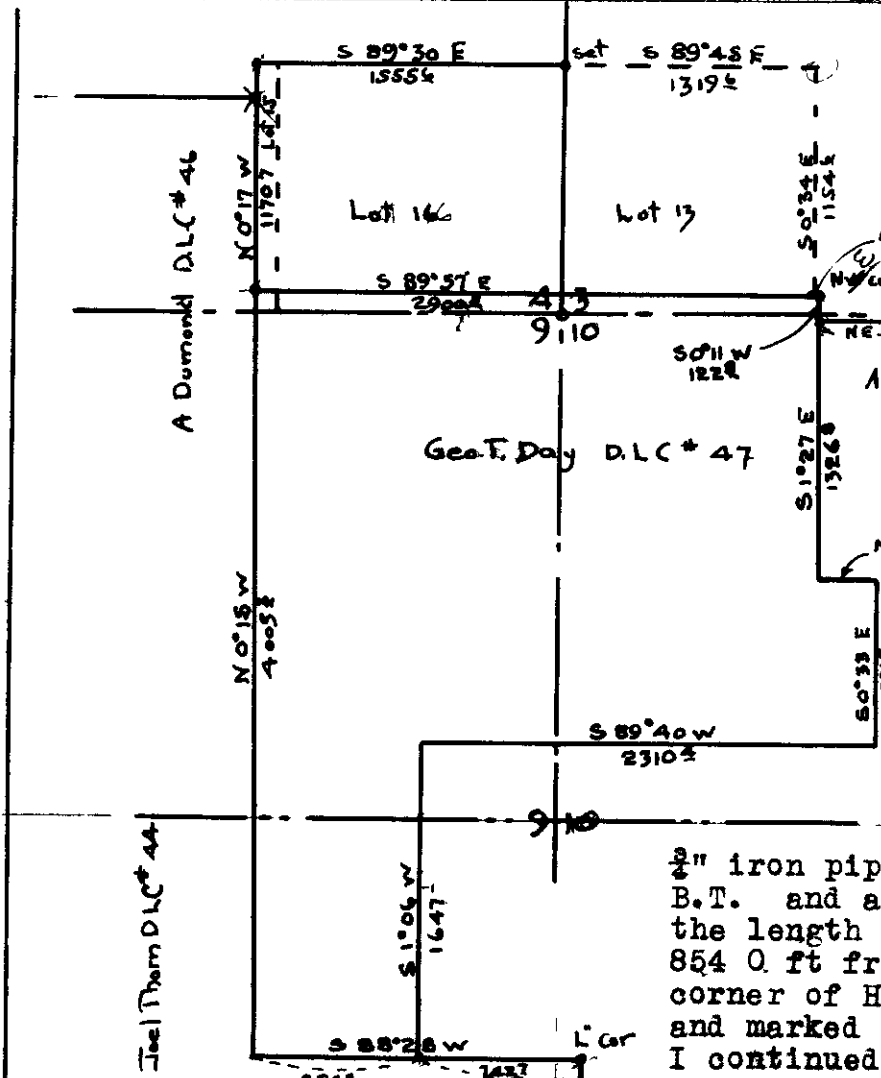
# COUNTY SURVEYOR'S RECORD, DOUGLAS COUNTY, OREGON

**Survey No**                      **Made on** April 3-7 1922  
**In Town** 30 S    **Range** 4N    **Sec.** 3-4-9-10  
**Made for** H. A. Hill,  
**Purpose of** Registering title

**Survey No.**                      **Made on**  
**In Town**                      **Range**                      **Sec.**  
**Made for**  
**Purpose of**

G. G Stewart, Deputy

*EX. 11"*



I began at the SW cor D.L.C. 47, where I found the O.B.T. I set an 1 1/2" iron pipe and marked a 14" W.O. N58°W 78.0 18" W.O. N86 1/2°E 91.0 ft. I ran a transit traverse line East to the interior "L" cor of said Claim and found the O.B.T. badly rotted. I set a 3/4" iron pipe for corner and remarked the O. B.T. and a 16" W.O. S 73°W 194.0 ft. Compute the length of line as S88°28'W 1596.7 ft. At 854.0 ft from beginning point, I set the SE corner of Hills land. Set a pipe with post and marked a 12" B.O. N 22°W 24.0 ft. I continued the traverse North to the NE cor. of D.L.C. No. 46 where I found the O.B.T. I set an I.P. for corner and marked a 24" B.O. S 15° E 9.2 ft, a 20" B.O. N 7°E 44.0 ft. The NW cor. D.L.C. No 47 was not set

and could not be found, so I went to the sec. cor common to 4-3-9-10 which I reset from two O.B.Ts. I set an I.P. for cor and marked a 24" B.O. N 82°W 36.6 18" B.O. N 35° E 12.5 ft. a 22" B.O. S 7 1/2° E 130.8 ft. No other tree available. From cor. as set I run North, needle line, to the quarter corner between 3&4. I find a 24" B.O. instead of a W.O., that is very well marked and is evidently the O.B.T. tho its bearing does not check. I reset corner from this tree using distance called for, 30.0 ft, and facing blaze on tree. This position checks with blaze on a 6" W.O. N41° E 42.0 ft. I set an iron pipe for cor. and marked a 24" B.O. S 32° W 30.0 ft, (O.B.T.) and an 18" Pine S 42° E 23.5 ft. I compute length of line to be 2566.1 ft and I set the sixteenth corner midway between on true line, needle line, I set an iron pipe for cor and blazed a 12" pine South 30 ft. I set an iron pipe on section line between 3 & 4, 137.3 ft North of the sec. Cor as set. and marked a 12" B.O. N 47 1/2°W 17.3 ft as point of intersection of sec. line and Claim line #47. From this point as set I run needle line, sun bearing, West 1559.0 ft and set I.P. for NW cor Cl. No 47. Marked a 24" Cedar N 1°W 74.6 ft. I tie into this corner as set, with my traverse and compute length of West line of claim as N 0°15'W 4005.3 ft and the distance from this corner to the NE cor Cl. 46 as N 0°17' W 1170.7 ft. and I continue this course of N 0°17'W 143.2 ft for approx. location of north line lot 15. Set an iron pipe and mark a 24" B.O. S 81°E 28.0 ft. I did not locate the NE cor lot 13 but computed its approx. position, also its SE position, from Govt. Field notes. I continued traverse to the NE cor Cl 47. Found a stake rotted, and the B.T. is down. I drove an oak stake, scribed and marked a 24" B.O. S 48°E 17.8 ft and a 12" Laurel S 65° W 38.0 ft. Compute North line Cl 47 as S 89°57'E 2900.5 ft. I tie into NW cor of Cl. 48 as set by previous surveyor. From here I continue South taking the fence corners as established corners, and placing white quartz boulder at these corners. Traverse checked out 14' in angle and about 3.9 ft in closing. Weather dark. Only had opportunity for one solar observation and no chance to check it. It gave variation as 21°02'E. W.S. Greerer, chainman H A Hill present part of time.