

COUNTY SURVEYOR'S RECORD, DOUGLAS COUNTY, OREGON

<p>Survey No. Made on December 16 1921</p> <p>In Town 30 S Range 5 W Sec 19</p> <p>Made for J M Yocum and Edwin Weaver</p> <p>Purpose of Establishing line between the NW$\frac{1}{4}$ and NE$\frac{1}{4}$ of section 19</p> <p style="text-align: center;">G G. Stewart, Deputy <i>Field Note, Lease Leaf, DWK 17, NV. 14.</i></p>	<p>Survey No. Made on</p> <p>In Town Range Sec</p> <p>Made for</p> <p>Purpose of</p>
-------------------------------------------------------------------------------------------------------------------------------------------------------------------------------------------------------------------------------------------------------------------------------------------------------------------------------------------------------------------------------------------------------------------------------------------	------------------------------------------------------------------------------------------------------------------------------------------------------------------------------------------------------

Legal Notices having been sent to J M Yocum and Edwin Weaver by registered mail I start the survey on Friday, December 16th 1921

I go to the section corner ($\frac{1}{4}$ corner) between sections 20 and 19 Find a mound of rocks and the B Ts as marked by previous surveyor and recorded The B Ts are badly burned and almost destroyed. I put in iron pipe for corner and mark new B Ts A 36" B.O. bears S 13° E 72.0 feet. A 20" B O bears N 69° E 46 5 feet Corner set in presence of J M Yocum, Edwin, Wm, and Vernon Weaver. From this corner as set I run a tacked transit West, Magnetic Bearing, using slope measurements and vertical arc and triangulate across river. I run as far as the West line of Sec 19 but can not find the quarter corner. I then go to the Northwest corner of section 19 but could find no corner established. I found a B O. Stump on edge of creek that had scribe marks "B T." on it and assume that it was stump of original B T No other B Ts could be found so I set the corner for sections 18, 19, 13, 24 from this stump according to original Gov't field notes I put in iron pipe for the corner and mark new witness trees. 12" B O. bears N 63° W 68.3 feet 12" W O. bears S 72° W 25 0 feet 18" W O bears N 42° E 72 5 feet and 12" W. O bears S 69° E 220 0 feet Witness J R. Bates, B Bates, J M Yocum From this corner as set I run tacked transit line South, Magnetic bearings, and found the witness tree for the quarter corner between section 19 and 24. I put in I Pipe for corner and marked new B T 30# Laurel bears S 43° E 25 5 feet 18" B O bears S 85° W 38 5 feet Corner set in presence of B. Bates and J M Yocum I continue transit line as run from quarter corner between 20 and 19 to this corner and from traverse as run I compute length across section 19 as being 5753 2 feet and bearing as S 89°50' W, Magnetic and the length of the line from the Northwest corner of sec 19 to this quarter corner as 2590 8 feet and bearing of S 0° 14' W Magnetic

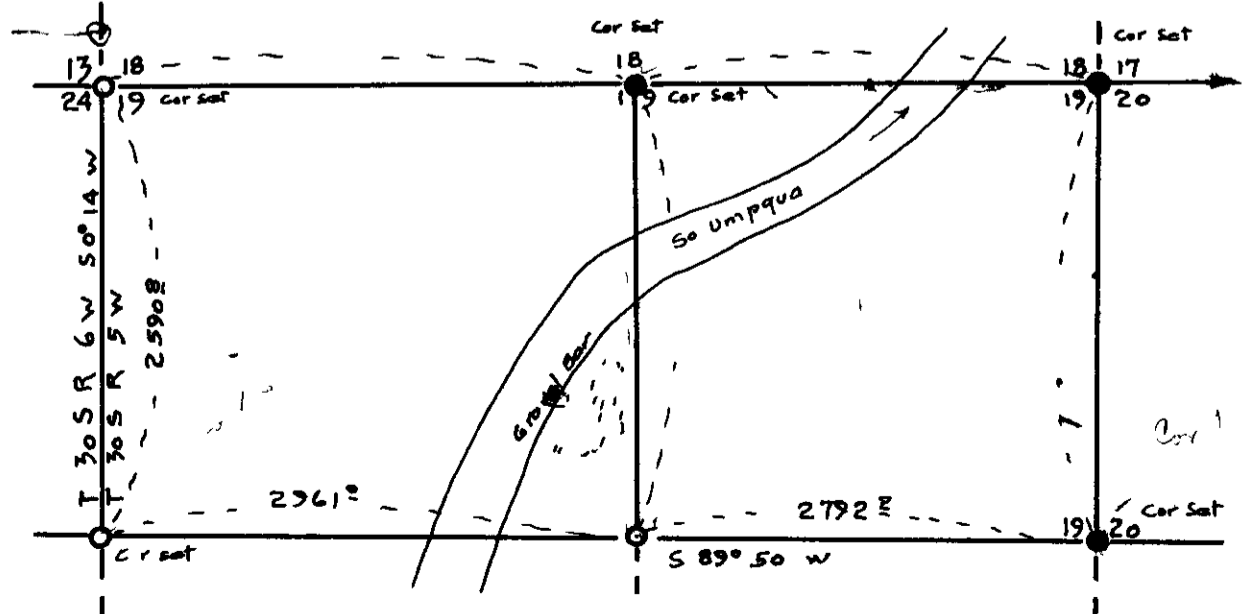
C 1/4
S 19

I set the approximate center of section from the line run across section 19, as follows 82 42 40.00 5753 2, x which makes x equal to 2792 2 feet from the East boundary of sec 19 I put in stake for corner and marked a 24" Pine bearing S 79° E 75 feet, a 8" W O. bears N 78° E 103 feet Witnessed by J M Yocum B Bates Vernon Weaver

The quarter corner between 18 and 19 cannot be found, so I run a transit line from the Northwest corner sec 19 East, carrying the bearings as determined from the line run South from this corner, to a point as computed being the section corner common to 17, 18, 19, 20 and drive a hub at this point The section corner cannot be found, after long search, so I go to the quarter corner between 19 and 20 and run transit line North, Magnetic bearings, the computed distance as called for in Field Notes and drive hub at this point The two hubs as driven do not coincide so to save expense, I establish an approximate corner by dividing the difference between the two hubs and setting a 4" squared stake I mark new B Ts

From traverse as run I compute distance from this section corner to quarter corner between 19 and 20 as feet and bearing
I then compute the position of the quarter corner between 18 and 19 as follows, 82.62 40 00 x, making x equal to feet from Northeast corner of 19 I set an iron pipe for corner and mark B.Ts

From traverse as run I compute length of North line section 19 as feet and bearing as
From the center of section as set I run a transit line north to the quarter corner as set, and compute this course as
This line as run then throws the gravel pit on the Right Bank of the South Umpqua river on the West side of the said line and onto land owned by J M Yocum All chaining was done with 300 feet steel tape, slope measurements used and vertical arc readings taken, and these measurements then reduced to horizontal distances Chaining was carefully done, and the tape was read at instrument head, I checked every reading taken Weather was dark, with snow and rain and no sun J M Yocum axeman, Jesse Davenport and Miles Jones Chainmen, Vernon or Wm Weaver present most of the time.



Continuation
PAGE 107