

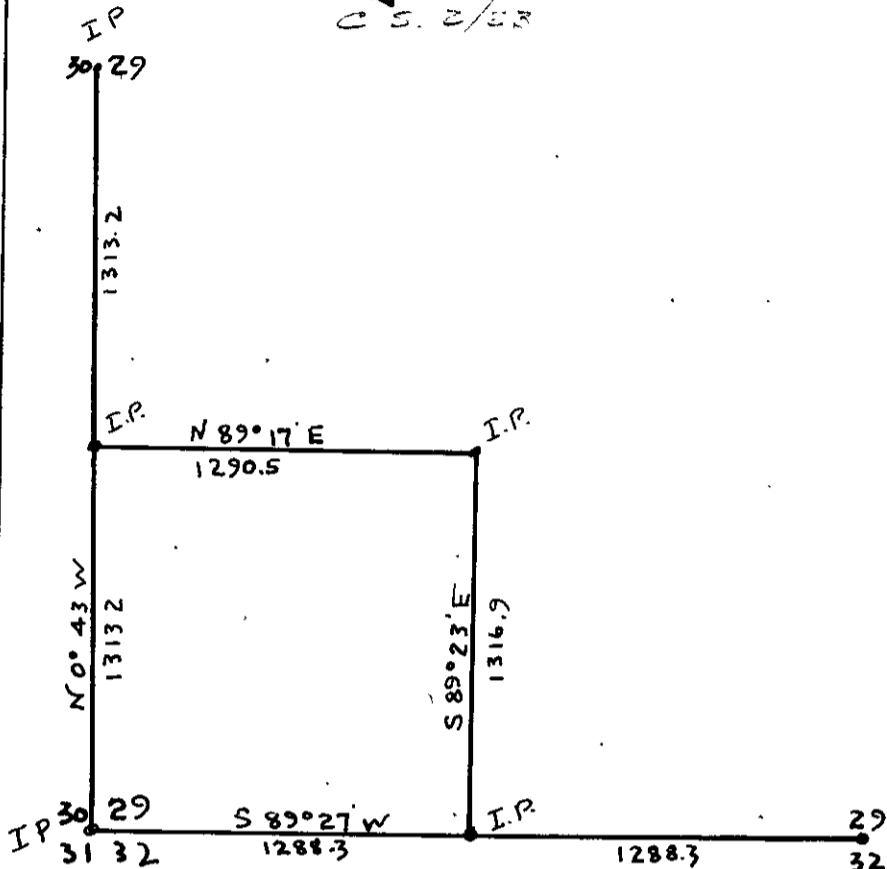
COUNTY SURVEYOR'S RECORD, DOUGLAS COUNTY, OREGON

Survey No. Made on Nov. 14 1921
 In Town. 25 S Range 7 W Sec. 29
 Made for H.F. Roeder, Millwood, Ore
 Purpose of Establishing lines and corners
 for fences

Survey No. Made on December 15, 1921
 In Town. 30 S Range 3 W Sec. 30
 Made for V. N. Poole, Days Creek Ore.
 Purpose of Irrigation Ditch
 See File Envelope

Douglas Co. Book 1913 Vol. 10 ³³⁵ Pg 44

Field Note Loose Leaf.



I began at the quarter corner between sec 29 and 30, as set by M.J. Germond. It is a rotted cedar post from which an 18" Fir bears N45°E 57 links. I reset corner by putting in 1" by 4' round bar with eye in end. A new B.T. a 24" Fir bears S 43°W 35 links.

I went to corner common to sections 29, 30, 31, 32 which was a pile of rocks, pointed out as correct corner by J.S. Germond, who said he had put rocks around the original corner stake. Witness trees destroyed by fire, so I reset this corner with a 1" iron pipe.

30" Fir N34°E 59.5 feet
 12" Alder S 25°30'E 42.0 ft
 10" Maple S 50°W 5.7 ft
 10" Maple N38°W 9.1 ft.

I then ran a transit line between these two corners and found the distance to be 2626.4 ft and the bearing to be S 0°43'W Magnetic (No sun)

I then established the quarter corner between section 29 and 32. I found a 6" Laurel, ant eaten, scribed $\frac{1}{4}$ B.T. ~~I reset the corner by driving an iron pipe.~~ I also found a blaze on a 6" Fir, as noted in field notes as being the corner, but no scribe mark. I marked the fir and set new B.T. a 10" Fir bears S 7° E 35.2 feet and a 24" Fir bears N 86° E 17.0 feet. I ran a transit line between the quarter corner as established and the section corner and found the distance to be 2576.7 feet and bearing to be N 89°27'E. On this line as established, I set the sixteenth corner 1288.3 ft from either corner driving an iron pipe from which a 14" Laurel bears N 20° E 30 ft.

I established the sixteenth corner on the West line of sec 29 by driving an iron pipe 1313.2 feet from the Sec cor and on true line between quarter and section corner. A 4" Laurel bears N 34° E 37 feet. From this sixteenth corner as set I ran N 89°17' E 1290.5 feet to an iron pipe from which a 12" Fir bears S 62°W 6 feet. From this interior sixteenth corner as set I ran a traverse to sixteenth corner on south line of sec 29., which did not close the piece, so I disregarded this last traverse as being in error and computed closing line. Acreage is 38.9 more or less.

Weather, dark and rainy, heavy brush, vertical angles and slope measurements used. One experienced chainman.

- G.G. Stewart, Deputy
- N. E. Richardson, Chainman
- H. F. Roeder, chainman.
- J. S. Germond, present part of time

I began the survey at the quarter corner between sec 30 and 31, T30 s R 3 W which was a yew wood post scribed $\frac{1}{4}$. Corner was pointed out by Mr. Poole as the correct corner, all Bearing Trees down. I reset corner with an iron pipe and marked new B.T. A 16" Maple bears N 69° W 24.0 feet and a 30" Fir bears S 46° E 60.0 feet. From this corner as set, I ran a traverse to the point of diversion on West fork of Poole Creek, computing the distance to be N 76°44'W 244.8 feet. I continued the traverse, locating the ditch and ran to the point of diversion on East fork of Poole creek, computing the distance from $\frac{1}{4}$ corner to be N 31° 41' W 621.0 feet. I also ran traverse for this ditch to the field to be irrigated. I filled out form for State Engineer for water filing and mailed same to V. N. Poole on Dec 23 1921. Bearings Magnetic. Chaining done with 300 ft steel tape.

G. G. Stewart, Deputy J. Davenport Chainman V. N. Poole, axeman.