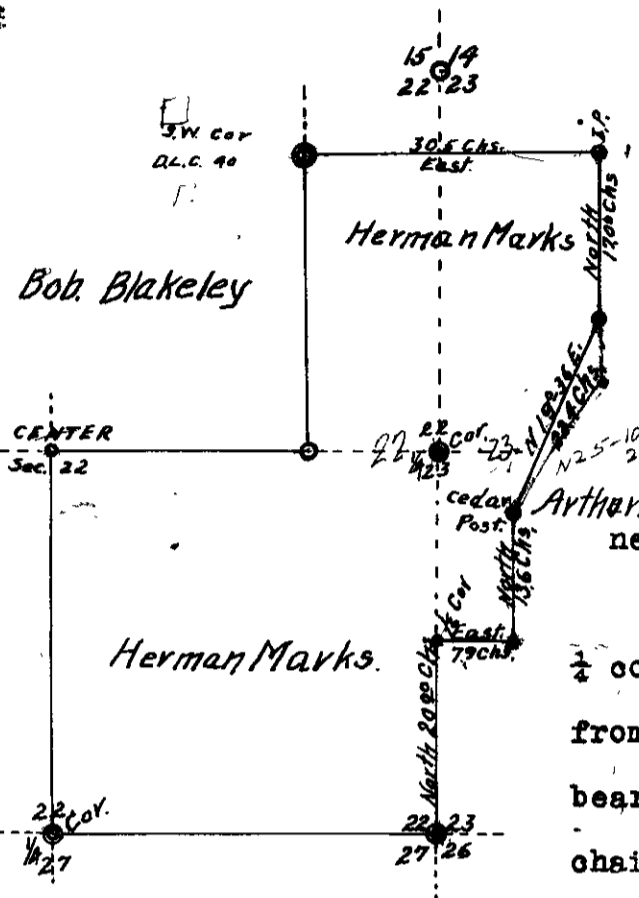


COUNTY SURVEYOR'S RECORD, DOUGLAS COUNTY, OREGON

Survey No. Made on Mar 2 1946
 In Town. 26 S. Range 4 W. Sec.s 22 & 23
 Made for Herman Marks
 Purpose of Establish East Boundary.
 EB 17-54, C.S. 1/46

Survey No. Made on
 In Town. Range Sec.
 Made for
 Purpose of



I began survey at the Section Corner common to Sections 22, 23, 26, & 27, T. 26 S. R. 4 W. W. M. This corner I renewed from old bearing tree, which bears S. 27° E. 37 links, and in section 26. The other trees were gone. I marked new trees as recorded in book on renewed Government corners.

From this corner I ran North 40.00 chains to the 1/4 corner between sections 23 & 22, which I renewed from one old bearing tree, which was a 30 inch W. oak bearing S. 18 E 313 links. This line ran North 40.00 chains from the section corner given above to the 1/4 corner. I then set the one sixteenth corner post and from there I ran East 7.9 chains, where I set an oak post. Thence I ran North 13.6 chains to a point, where I placed a cedar post. Thence I ran a line N. 25° 10' E 21.18 chains.

I then ran a line East 30.5 chains from the S.W. Corner of D. L. C. No. 40; which was sworn to be the said corner by Robert Blakeley and Arthur Blakeley, to a point on the south boundary of D. L. C. No.40 and the N. E. corner of Herman Marks property. Thence I ran South 17.00 chains. There I tied to the line I ran from the cedar post, as stated above. The distance and bearing of this tie line was S. 27° 42' E. 3.36 chains. Then I figured the tie line from this point to the cedar post and found the bearing to be S. 19° 36' W. and the distance 22.4 chains. I then ran this line and checked on the cedar post.

AL Eppstein
D.C.S.