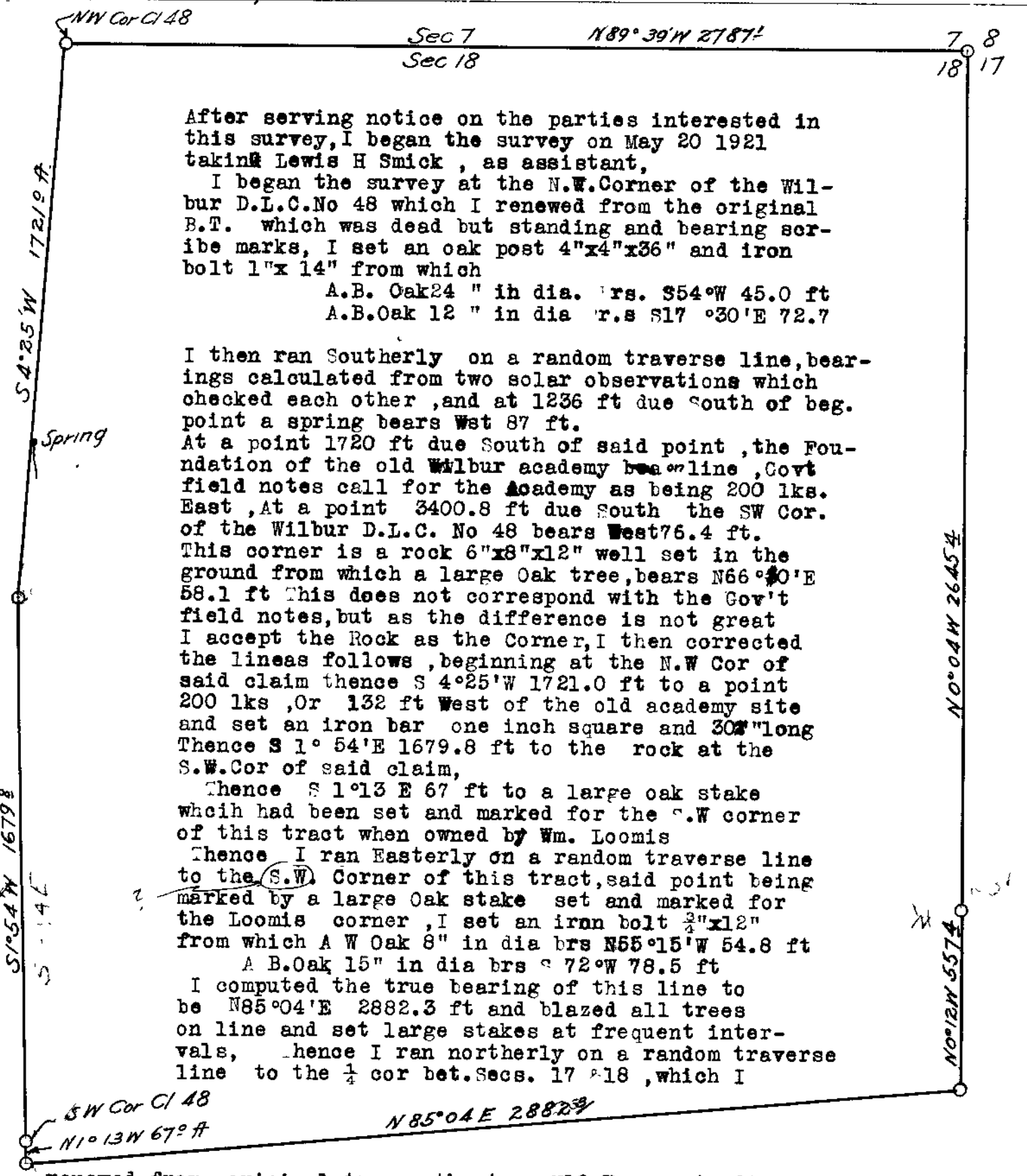


92

COUNTY SURVEYOR'S RECORD, DOUGLAS COUNTY, OREGON

Survey No. Made on May 20 1921
 In Town. 26 S Range 5 W Sec. 18
 Made for B. Irving
 To establish the West Boundary of
 Purpose of the Wilbur D.L.C.No 48 and the
 boundaries of Irvings land.
 True Var 21°40 E
 CS 1/52 FB No 21⁵¹ P. 19

Survey No. Made on
 In Town. Range Sec.
 Made for
 Purpose of



After serving notice on the parties interested in this survey, I began the survey on May 20 1921 taking Lewis H Smick, as assistant, I began the survey at the N.W. Corner of the Wilbur D.L.C.No 48 which I renewed from the original B.T. which was dead but standing and bearing scribe marks, I set an oak post 4"x4"x36" and iron bolt 1"x 14" from which
 A.B. Oak 24 " in dia. brs. S54°W 45.0 ft
 A.B. Oak 12 " in dia brs S17 °30'E 72.7

I then ran Southerly on a random traverse line, bearings calculated from two solar observations which checked each other, and at 1236 ft due South of beg. point a spring bears West 87 ft. At a point 1720 ft due South of said point, the Foundation of the old Wilbur academy bearing line, Govt field notes call for the Academy as being 200 lks. East, At a point 3400.8 ft due South the SW Cor. of the Wilbur D.L.C. No 48 bears West 76.4 ft. This corner is a rock 6"x8"x12" well set in the ground from which a large Oak tree, bears N66°30'E 58.1 ft This does not correspond with the Gov't field notes, but as the difference is not great I accept the Rock as the Corner, I then corrected the lines follows, beginning at the N.W Cor of said claim thence S 4°25'W 1721.0 ft to a point 200 lks, Or 132 ft West of the old academy site and set an iron bar one inch square and 30" long Thence S 1° 54'E 1679.8 ft to the rock at the S.W. Cor of said claim,
 Thence S 1°13 E 67 ft to a large oak stake which had been set and marked for the S.W corner of this tract when owned by Wm. Loomis
 Thence I ran Easterly on a random traverse line to the (S.W) Corner of this tract, said point being marked by a large Oak stake set and marked for the Loomis corner, I set an iron bolt 2"x12" from which A W Oak 8" in dia brs N55°15'W 54.8 ft
 A B. Oak 15" in dia brs S 72°W 78.5 ft
 I computed the true bearing of this line to be N85°04'E 2882.3 ft and blazed all trees on line and set large stakes at frequent intervals, hence I ran northerly on a random traverse line to the 1/4 cor bet. Secs. 17 & 18, which I

renewed from original trees, the tree N10°E was standing and alive the tree West was entirely gone but a pit remained where it had stood I set an iron R.R. Spike and a large oak post from which
 A B. Oak 18" in dia brs S40°30'W 35. ft
 A B. Oak 14 In dia brs. N 73°W 24.2 ft
 I computed the true line between these points to be N0°12 ' W 557.4 ft. Thence Northerly on a random traverse line to the corner of sections 7&8-17&18 which I renewed from the decaying remains of the original bearing trees, which checked closely, I set a large oak stake from which marked new trees
 A fir 18" in dia S29°W39.2 ft
 A fir 24" in dia S56°10'E 35.1 ft
 A fir N 33°40'E 36.2 ft
 A fir N59°W 45.5 ft
 The true bearing and length of this line, I computed to be N0°04'W 2645.4ft Thence Westerly by a random traverse line to the beginning point and computed the true bearing to be N80°39'W2787.ft
 I corrected and blazed all travers lines run.

J. W. Cole
 Dep Co Surveyor.