

90 COUNTY SURVEYOR'S RECORD, DOUGLAS COUNTY, OREGON

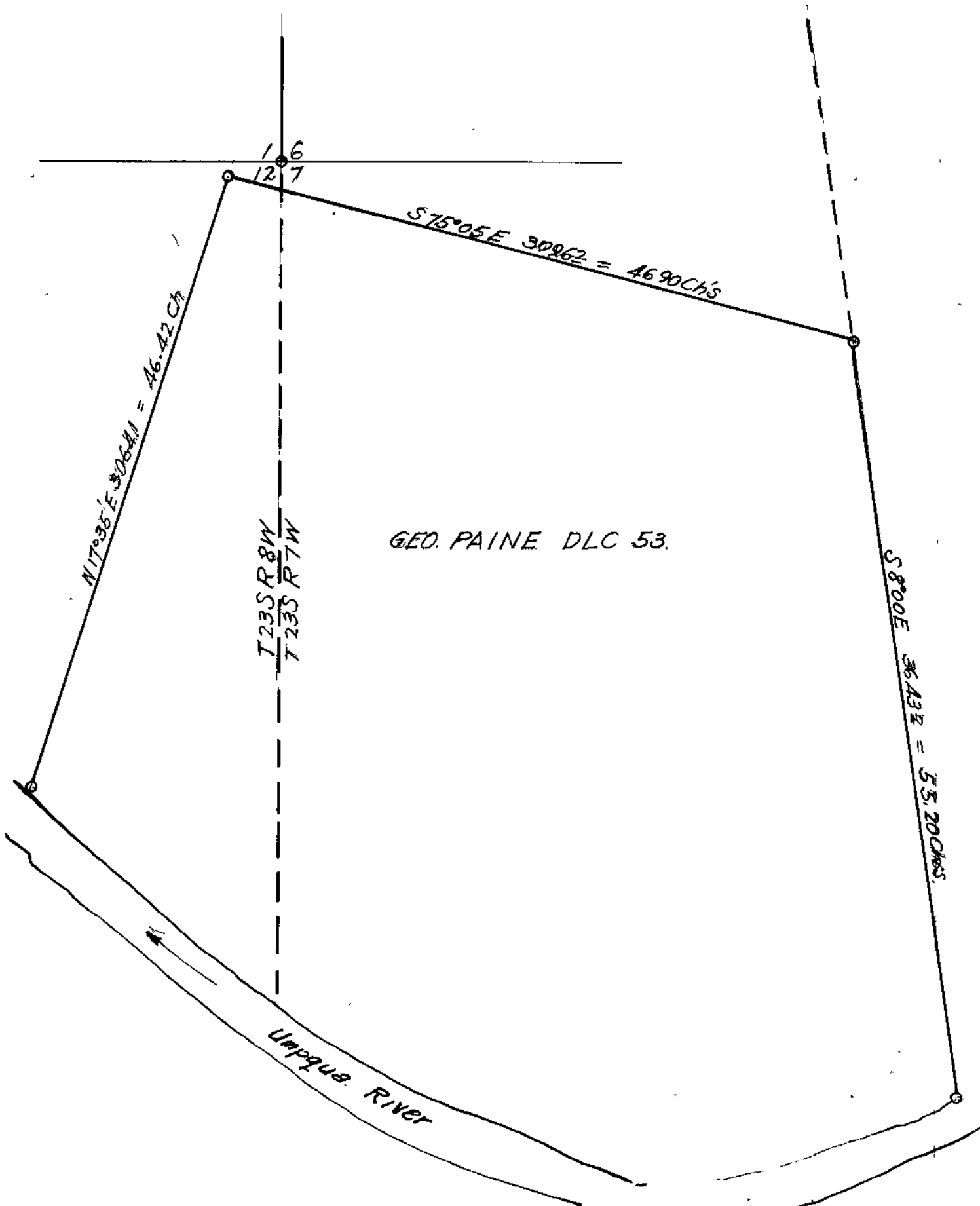
Survey No. Made on Feb 25-28 1921  
 In Town. 23 S Range 7&8 Sec. D.LC 53  
 Made for Warren Cheever  
 Purpose of To establish the boundaries of Claim 53

Survey No. Made on  
 In Town. Range Sec.  
 Made for  
 Purpose of

J.W.Cole Deputy C.S.

c.s. 1/20

Field Book NO 20 Page 28



(continued from previous page)

Thence N89°34'E 2119.4 ft to the South East corner of the Levins Cl. 50  
 Thence N0° 50' W. 699.5 ft to the South West corner of the Snyder Cl No. 51  
 which was defined by a fence corner and from which an oak bearing tree checked  
 with the Government field notes,

Then from the rock at the North East corner of Claim 53 I ran S 8°00'E  
 36.42.3 ft and looked for evidence of the South East corner of Claim 53  
 I could find no trace of this corner as the bank of the river had washed  
 out and carried the bearing trees with it, I ran N8°00'W 100 ft and set a  
 witness corner to the true corner, said witness corner being an Oak post  
 4"x4"x40", also an iron pipe 1"x 30" and marked new trees An Oak 10" in dia  
 66°E 27 ft. an Oak 12" in dia 20°30'W 40 ft.

Witnesses  
 Warren Cheever  
 Alfred Haines  
 L.H. Smick