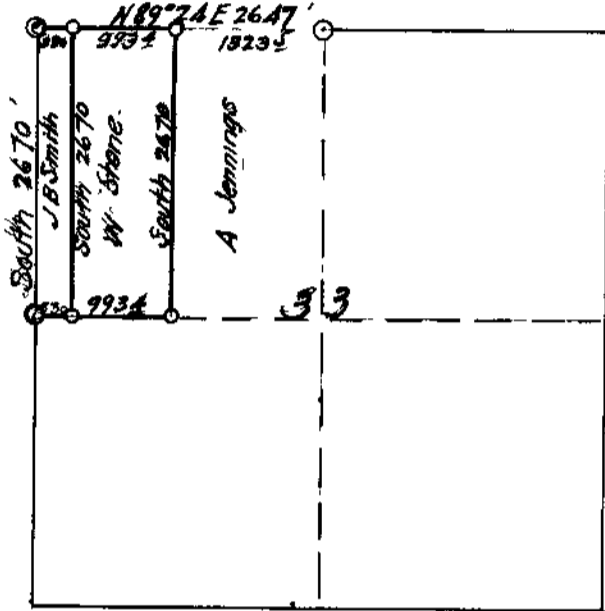


# COUNTY SURVEYOR'S RECORD, DOUGLAS COUNTY, OREGON

<b>Survey No.</b>	<b>Made on</b>	March 15 1921	<b>Survey No.</b>	<b>Made on</b>	
<b>In Town.</b>	28 S	<b>Range</b> 5 W	<b>Sec.</b>	33	
<b>Made for</b>	J, B. Smith, W. C. Stone & A. Jennings		<b>Made for</b>		
<b>Purpose of</b>	to establish the East and West boundaries of W. C. Stone's Property		<b>Purpose of</b>		
	J. W. Cole Deputy F. B. 20-34 150				

I began the survey at the North West Corner of Section 33 which I established from two of the Original bearing trees, I chopped open the large oak bearing tree North 13° W and found the scribe marks, I then sat at the tree and ran S13°E 273.4 ft and set a stake thence S29° W 490 ft to a large Black Oak which I believed to be on of the original bearing trees, but which I did not chop open,



I set a large oak post for corner also an iron pipe 2"x 30 " and marked new trees as follows,  
 A B Oak 15 in dia N40°E 74 ft  
 A W Oak 42 I" dia. N 28°W 185

Thence East 330 ft .Thence South 2670 ft. to a stake from which a Fir 8" East 3.5 ft.  
 Thence West 333 ft to the 1/4 Sec Corner between Sections 32&33 which I established from the original bearing trees, which were alive and standing, I did not chop them open as it would kill them, I set an oak post and made a mound of rock for the corner.

I then returned to the stake 330 ft East of the North West corner of Section 33 and continued East on a random line to the 1/4 Corner between 28&33, which I established from the original bearing trees which were alive and standing, scribe marks were visible on that I chopped open, I set an oak post and an iron plow share for the corner, thence S89°24'W on the true line and at 1323.5 ft I set a post for the NE corner of Stones property, thence South 2670 ft to a stake from which a fir 12" in dia. N51°E 11.3 ft Marked CS B T

Stone Jennings and Smith all verbally agreed to these lines as marked on the ground, and the East and West boundary of Stones land as marked by me were approximately 160 ft. West of old fence lines running North and South and evidently intended for the property lines at some time