

81

COUNTY SURVEYOR'S RECORD, DOUGLAS COUNTY, OREGON

Survey No. <i>Made on:</i> Dec 6 1920 In Town. 30 Range 4 Sec. 22 Made for J.S. Moore Purpose of To determine the location of the East and West 1/16 line through the NE 1/4 of Section 22 F.B.L9 ⁴⁴⁹ Page 36	Survey No. <i>Made on:</i> In Town. Range Sec. Made for Purpose of
--	---

I began the Survey on the Corner to Sections 15-16-22-23 T30S R 4 W W.M. I renewed this corner from 3 small Oak bearing trees, which are alive and standing (See record book of Renewed Government Corners), I then went to the 1/4 Sec. Corner on the East Boundary of Section 22, and ran N1°55'E 1185.6 ft with Mag. Var of 21°15'E I set a hub No 1. and turned 91°02' to the right and laid off a base line 500 ft in length, I went to the East end of this base line and measured the angle to the Section Cor. which I found to be 69°38' Solving the triangle, I made the distance from hub No 1 to the Sec Corner 1413.4 ft I deflected 0° 25' to the Left from line South of hub No. 1 making bearing of line from hub No.1 to the Section Corner, N1°30'E I then computed the true line from the 1/4 Corner to the Sec. Corner to be N1°40'E 2600.0 ft.

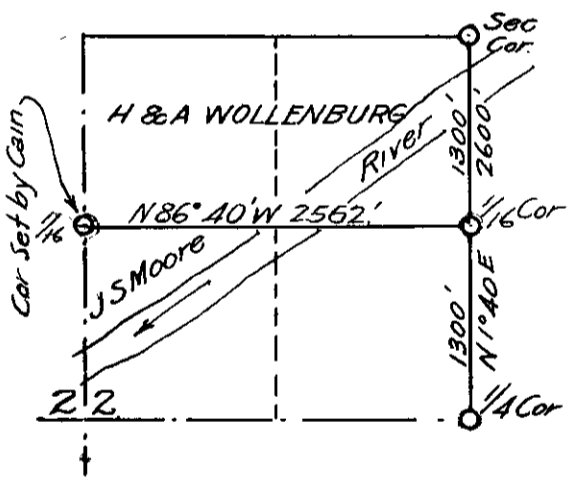
At hub No . 1. I set over to the West 4.7 ft and ran N1°40'E 114.4 ft. and Established the 1/16 Corner as Follows,

Set an iron bolt 5/8 x 30 inches 2 ft. in the ground also a Cedar stake 3x4x 40 inches, and erected a mound of rock, from which I marked Bearing trees, a Cottonwood 36 " in dia N66°W 180.3 ft
 An Oak 50" in dia N72°E 381.8 ft.

 Thence on a random, traverse line N88°20'W 300.0 ft. Thence N87°50'W 200 ft. Thence N86°02' W 1864.7 ft to the 1/16 Cor previously established by former County Surveyor, Frank Cain I computed the true line to be N86°40'W 2562.0 ft and set stakes on the true line, True line falls exactly on the fence, built on an unofficial survey made by Charles Roberts

 There was no sunshine during the time of the survey and a Solar observation was impossible.

J.W. Cole
 Deputy County Surveyor
L.V. Smith Chain
P.D. Wolford Chain



Copy of This. furnished County Clerk.