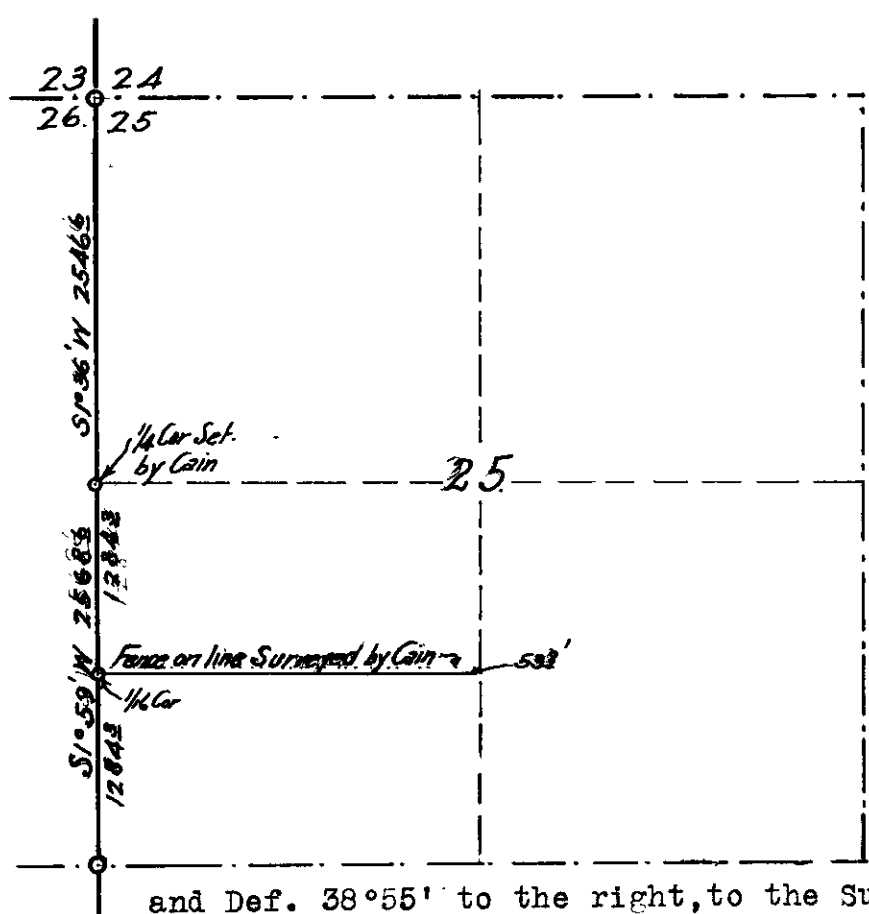


COUNTY SURVEYOR'S RECORD, DOUGLAS COUNTY, OREGON

77

<p>Survey No. Made on Oct. 24-28-1920</p> <p>In Town. 29 Range 6 Sec. 25</p> <p>Made for Pearl Johnson and J.M. Ledgerwood</p> <p>Purpose of To determine the property line</p> <p>Between Johnson and Ledgerwood.</p> <p>Field Book No. 19 ⁴⁹ Page 4-10</p>	<p>Survey No. Made on</p> <p>In Town. Range Sec.</p> <p>Made for</p> <p>Purpose of</p>
---	--



I began the survey at the Corner to Sections 23-24-25-25-26 and found an Oak stake, properly marked and standing in proper position according to two witness trees, which were standing, I ran a traverse south, deflecting small angles to avoid the large trees. At a hub 879.4 ft. South of the Section Corner, I took a Solar Obs. as follows, Set on hub No 6, BS. on No 5

and Def. 38°55' to the right, to the Sun, and measure the altitude angle which was 27°19' Time 2:20 PM Oct 24 1920 Dec computed as follows.

Dec. at Greenwich apparent noon,	11°42' 42.6"
H.C. 52.20" x 10.3 hrs.	8 58 "

	11°53 40.6"
Corr for refraction	- 40.6

	11°53' 00.0"

Computed latitude to be N 43°01'
 Using formula $\cos Q = \frac{\cos L \times \cos A}{\cos P}$ (tan Lat x tan Alt.) - (-sin Dec.)

equals .7989 eq $\cos 36°58'$ giving S 1°57' ^E as course of line from which Obs. was taken. Var of Needle was used as 21°15'E and Mag Course of the line was S 2°15 E, At 2546.6 ft. I intersected 68.8 ft. East of a qr Sec. Corner established by Frank Cain in 1913, and At 51153 ft. I intersected 159.9 ft. East of the Corner to Sec, s 25-26-35-36-which I renewed from the remains of two original bearing trees, One of which J. M. Ledgerwood testified by a sworn statement, that it was the remains of an Original bearing tree. I also checked the point set by me, with the witness trees marked by Frank Cain, and it agreed closely, I renewed the corner in the manner described, in the record book of Gov, t Corners

I computed the course of the first one half mile run, as S 1°56' W 2546.6 and the one half mile south of the qr. post as S 1°59' W 2568.6 ft.

I then located the $\frac{1}{4}$ corner N 1°59' E 1284.3 ft. from the Sec Corner and established this corner by setting an iron pin 1 1/2" in dia an 20" long, also a cedar post 4"x4"x 40" marked C S 1 1/16 from which

- A W Oak 8" in dia brs N 7° W 29.5 ft.
- A W Oak 8" in dia brs S 30° E 126.6 ft

I found this corner to be 53.8 ft. South of a point marked by Frank C