

68 COUNTY SURVEYOR'S RECORD, DOUGLAS COUNTY, OREGON

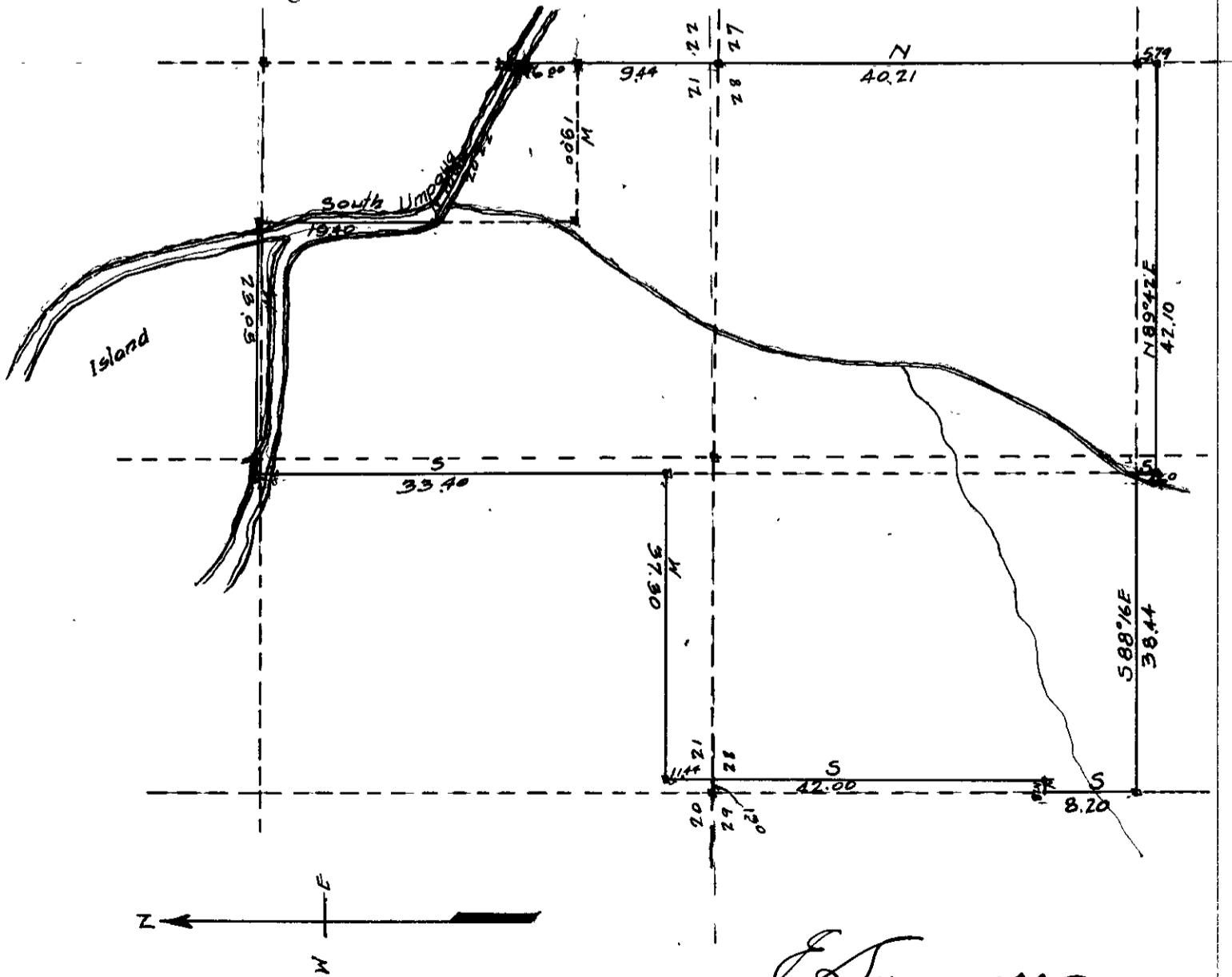
Survey No. Made on April, 2, 1920
 In Town. 30, S. Range 5, W. Sec. 28, 21,
 Made for Ballenbough, Estate,
 Purpose of Establishing Corners and getting
 acreage, land sold to M.E. Manley

Survey No. Made on
 In Town. Range Sec.
 Made for
 Purpose of

F.B. 16 = A7

Beginning survey at section corner common to sections, 21, 22, 27, 28, Township, 30, South, Range, 5, West, of the Willamet Meridian.
 Thence, South 9.44 chains to corner of D.L.C. No. 48, 15.44 chains corner in South Umpqua River, common to both D.L.C.'s Nos 48 and 50
 Thence, N. 70° 00' W. 20.22 chains along the South fork Umpqua River to corner in river.
 Thence, South 19.40 chains to North East corner of D.L.C. No. 50 Set stone.
 From which, a Maple 20' diameter bears S. 22° 30' W. 209 links
 a Blok Oak 36' " " N. 56° 30' W. 116 "
 Thence, W. 23.05 chains to North West corner of D.L.C. No. 50 Set stone 255 links South of true corner, which is in river
 From which, an Alder 4' diameter bears S. 80° 00' W. 82 links
 " " 8' " " N. 77° 30' E. 179 "
 Thence, S. 33.40 chains to S.E. corner D.L.C. No. 47. Set stone.
 From which a Laurel 8' in diameter bears S 81° 00' W 24 links
 White Oak 22' " " S 00° 00' W. 124 "
 Thence, W. 37.30 chains to S.E. corner D.L.C. No. 47. Set stone.
 From which a Laurel 24' diameter bears S. 19° 00' E. 21 Links
 " " 36' " " N. 69° 00' W. 29 "
 Thence, S. 42.00 chains to S.E. corner D.L.C. No. 46. Set stone.
 From which B. Oak 12' diameter bears S. 16° 00' E. 78 links
 B. " 18' " " N. 5° 00' W. 16 "
 Thence W. 118 links to a point on West line section 29 being a point 8.20 chains N. of quarter corner between sections 28 and 29
 Thence, S. 8.20 chains to W. quarter corner of section 28. Set stone.
 From which a B. Oak 12' diameter bears S. 7° 30' W. 75 links
 " B. " 30' " " N. 28-00'E 124 "
 Thence S. 88° 16' E 38.44 chains to West line of D.L.C. No. 50. 450 links North of S.W. corner of D.L.C. No. 50.
 Thence, South 4.60 chains to S.E. corner of D.L.C. No. 50. Set stone.
 From which a B. Oak 36' diameter bears N. 72° 00' E. 177 links
 Thence N. 89° 42' E. 42.10 chains to S.E. corner of D.L.C. No. 50 on East line of section 28. Set stone
 From which a Laurel 8' diameter bears N. 58° 00' E. 8 links
 " " 10' " " N. 84° 00' W. 13 links
 Thence N. 579 chains to E. quarter corner section 28.
 N. 46.00 chains to place of beginning
 Containing 521.95 acres

NE COR D.L.C. 50
NW COR D.L.C. 50
SE COR D.L.C. 47
SW COR D.L.C. 47
SE COR D.L.C. 46
1/4 COR 27/28
SW COR D.L.C. 50
SE COR D.L.C. 50



E. Summer