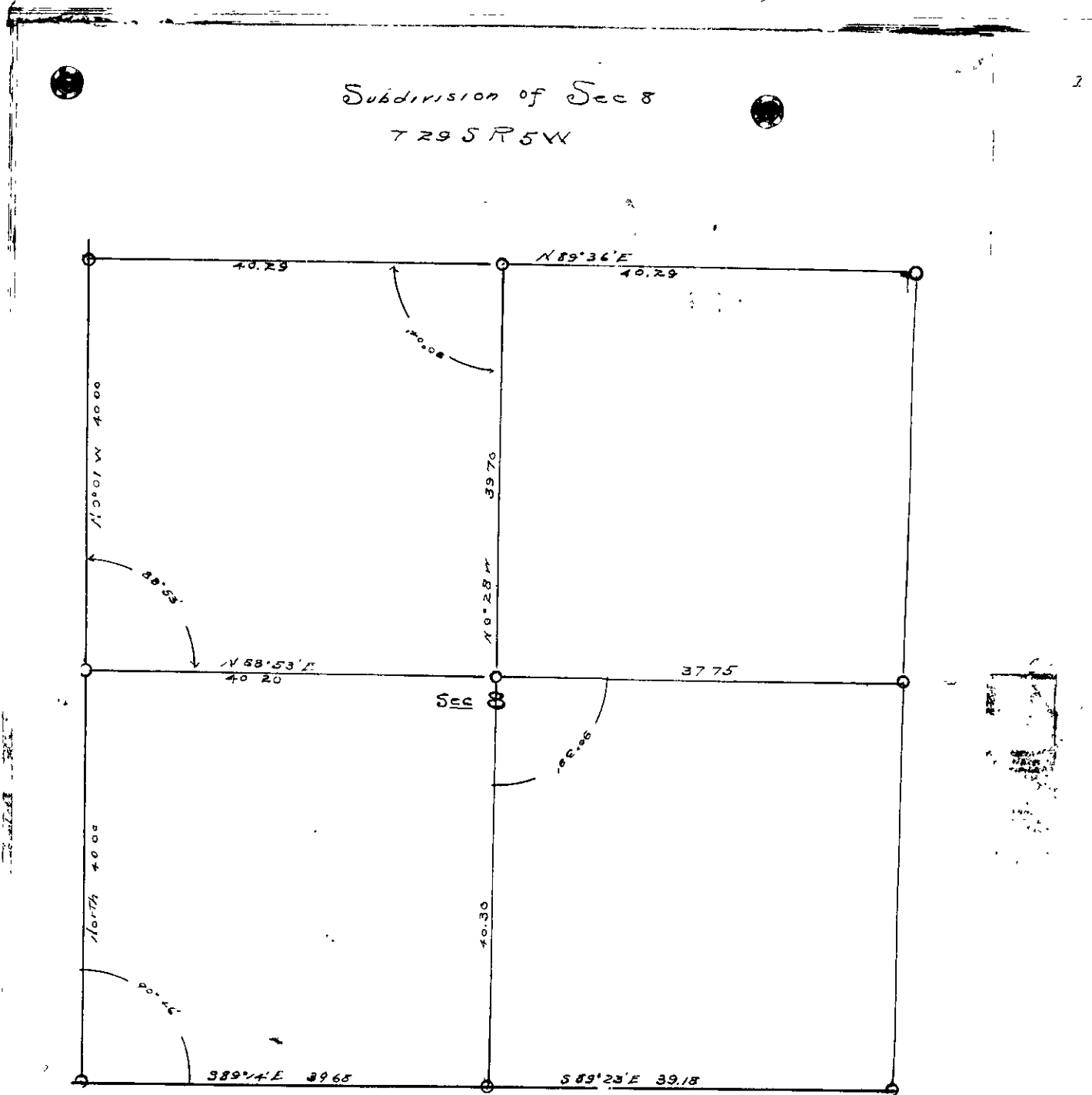


Survey No.

Made for *Fred Johnson et al.*



From the $\frac{1}{4}$ post between Sections 8 & 17 I run a true line to the $\frac{1}{4}$ post between Sections 5 & 8 and establish the center of Sec 8 at the intersection of this line with the true line running from the $\frac{1}{4}$ post between Sections 7 & 8 to the $\frac{1}{4}$ post between Sections 8 & 9

For the center of Sec 8 Set a pitch pine post $3\frac{1}{2}'' \times 4'' \times 13\frac{1}{2}''$
From which;

A pine 36" in dia, marked 1/16S CS bears, S.80°35'E.264 links;
" " 36" " " " " " N.80°35'E.314"
SW Face of a rock 7'x12'x4' high " S.41°W -237 "
No tree near in NW $\frac{1}{4}$ of Section.
Var used in taking bearings to these BTs --20°E--

Note-----Formation in Section 8 largely Serpentine and its associated rocks, which makes much local attraction and very little if any dependence can be placed on magnetic bearings

Frank Cain Sup. Co. Des. V.

al.

Page 2

Subdivision of Sec 8 Tp 29 S R 5 W

Begin at the Corner of Secs 7, 8, 17 & 18 take foresight on true line between Secs 7 & 8 and turn 89°57'R. and run N.89°57'E. random between Secs 8 & 17

" " " " 39.60 Intersect 57 links north of $\frac{1}{2}$ post which I establish by original BT, to wit A Laurel 24" in dia, bears S.35°E.401ks.

Establish $\frac{1}{2}$ post a pitch pine 4"X4"X3 $\frac{1}{2}$ ' marked $\frac{1}{2}$ S CS.

From which;
A Pine 24" in dia marked $\frac{1}{2}$ S os bears N.54°W.63 links;
A Cedar 13" " " " $\frac{1}{2}$ S S " S.85°30'W, 67 "

Continue random line

N.89°57'E, 78.86 Intersect 48 links North of Cor. which I renew from original BTs, raise mound of rock 4'X4'X2' and remark BT in Sec 17 as old markings are grown over.

From the $\frac{1}{2}$ post between Sections 8 & 17 I run a true line to the $\frac{1}{2}$ post between Sections 5 & 8 and establish the center of Sec 8 at the intersection of this line with the true line running from the $\frac{1}{2}$ post between Sections 7 & 8 to the $\frac{1}{2}$ post between Sections 8 & 9

For the center of Sec 8 Set a pitch pine post 3 $\frac{1}{2}$ "X4"X3 $\frac{1}{2}$ '
From which;

A pine 36" in dia, marked 1/16S CS bezms, S.80°35'E.264 links;
" " 36" " " " " " N.80°35'E.314 $\frac{1}{2}$ "

SW Face of a rock 7'X12'X4' high " S.41°W 237 "

No tree near in NW $\frac{1}{4}$ of Section.

Var used in taking bearings to these BTs --20°E--

Note-----Formation in Section 8 largely Serpentine and its associated rocks, which makes much local attraction and very little if any dependence can be placed on magnetic bearings

Frank Cain Rep. Co. Surv.
Recorded By F.C. Fear Co. Surv.