

Survey No. ....

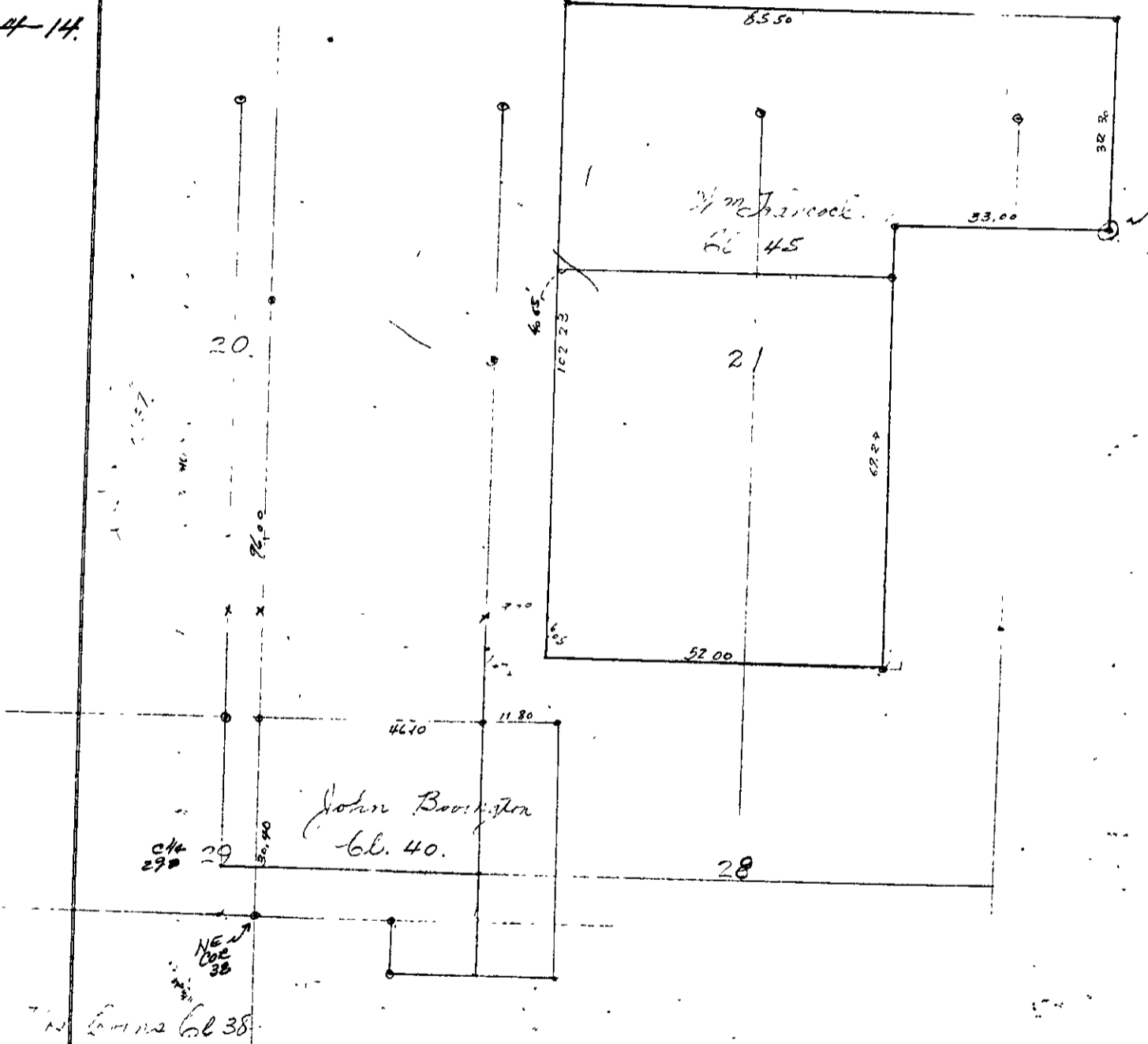
Made for *Ed Hancock*

J. 22 SRW  
Feb 5 1913.

Survey made to locate boundaries  
of Hancock's land.

Chairman { *Lillie Hancock*  
              { *Ed. Hancock*

Field Book 13-39  
Page 4-14.



Begin at the SE Cor of Cl. 45.

On random line

Set temporary stake and search for corner  
find no traces of corner

Go to NE "L" Corner find for witness trees standing  
on offset line.

Intersect previous random line 4610.7 ft north of SE Cor  
Established Cor. South 41.5 ft and East 76 ft of  
intersection of random line

North

West  
3254.