

Survey No.

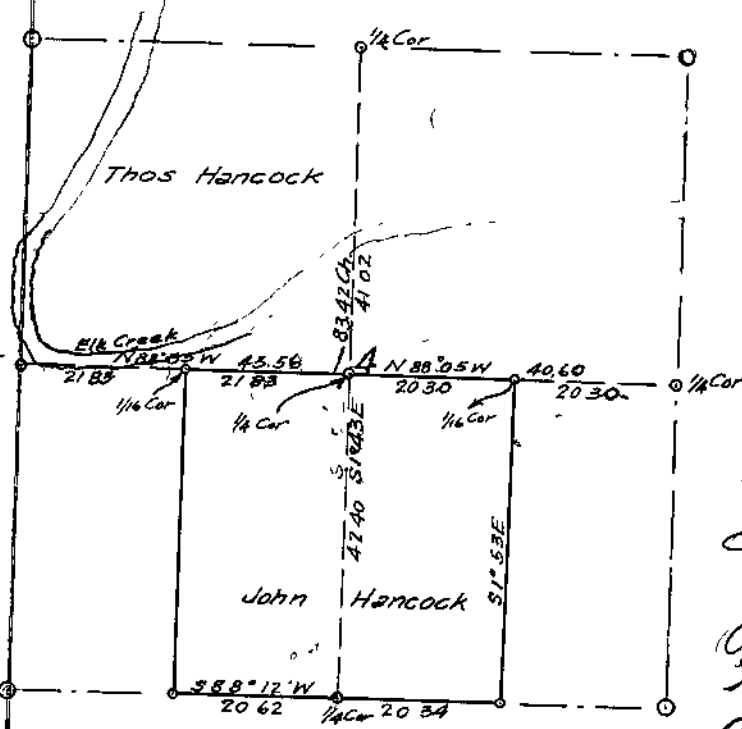
Made for *John Hancock*

T22SR7N
Sec 14

Dec 16-22 1915
Corners Recorded

J. W. Cole
deputy.
Shawmen.
Oscar Hancock
Jim
Armen
John Hancock

Survey made to determine boundaries of John Hancock land in the S 1/2 of Sec 14 T22SR7N. N.M.



Could get no sure observation during entire Survey
Begin at the 1/4 Corner on the East side of Sec 14
First remains of 30" cedar which John Hancock testifies is a Witness tree and which checks N 1° E 26 lks with old fence

Field Book 19=64
Pages 17-25.

Corner renewed by setting a 4" x 4" x 3 1/2 cedar post mks B D, C 13, A 14, 1/4 D on S, E, N and W sides and mark Witness trees as follows
A fir 72" in dia mks 1/4 A B C. bearing N 5° 15' E 142 lks.
" " 72 " " " " " " S 58° 30' E 154 lks.
Thence S 89° 50' W On Random line Var 21° 45' E.

20.00
40.00
60.00
80.00

Set temporary 1/16 Sec Cor.
" " 1/4 Sec Cor
" " 1/16 " "
Set stake and look for 1/4 corner on W boundary of Sec 14. Find stumps of Witness trees which I identify by and old scars on the smaller one, by their relations to each other and to the perpendicular cliff mentioned in field notes. Set an iron pipe 2" x 4' for corner from which the top of RR Tunnel is N 14° E about 75 lks could not get any Witness trees as corner is on face of cliff. Continue Random. Intersect 3.07 lks South of Cor. True bearing N 88° 05' W (corner).

84.27.