

Survey No.

Made for W. W. Love & R. L. Allen

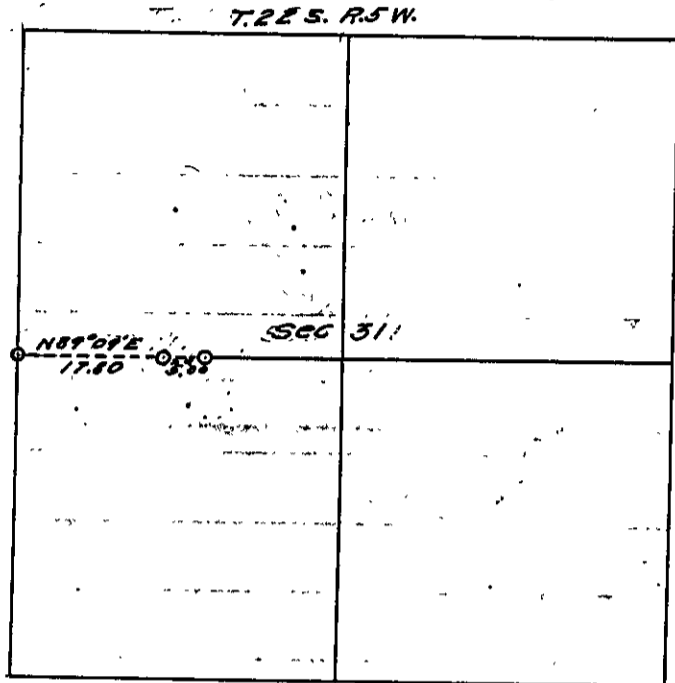
T. 22 S. R. 5 W.

Sec-31.

Oct 20, 1915.

Field Book No 9-1649

Page 4



To establish the boundary line between the properties of W. W. Love and R. L. Allen

Love's deed is a metes and Bounds description of which call for this line is as follows. Beginning at the 1/4 corner on the West side of sec 31, thence East 17.80 chains.

Allen's deed gives him the west half of the S.W. 1/4 of Sec 31. M. Moor, sworn, and myself acting as chainmen. Beginning at the 1/4 corner on the West side of sec 31 T. 22 S. R. 5 W. I took a solar observation and ran East.

22.81

Intersect 34 1/2 South of point indicated, at fence corner, by R. L. Allen and J. T. Miller. This point is said by Allen and Miller to be the corner set by G. Hefty, when he subdivided the section. Later C. E. Roberts, subdivided the section and arrived at the same point.

As W. W. Love R. L. Allen and J. T. Miller agree to a line which will intersect the point indicated as Roberts corner, and have signed their names in Field Book No 9 1915. of Land Surveys, I return and correct my line from 1/4 corner on West of Sec 31.

N. 89° 09' E. 17.80 chains set a sandstone rock 10x10x12 inches in diameter marked + for corner. From which

A Fir 56 in dia brs N. 30° W. 40 lks.

" Maple 16 " " " S. 39° W. 87 "

This is the corner of the Land of W. W. Love, on the line indicated as the line run by C. E. Roberts as County Surveyor.

F. J. Cole, deputy Co. Surveyor