

County Surveyor's Record, Douglas County, Oregon

Survey No.

Made for *Laura Shuman & J.F. Fisher*

*T. S. R. 7 W.
Sec. 2.
July 23, 1915*

*Chairman
A. Tompkins
Frank Royer*

*Field Book 18 = 37
Pages 63-64*

*See Vol 2, page 200
for cor. loc. work
5/11/64*

To locate the East line of the S.W. 1/4 of the N.W. 1/4 also the East line of the W 1/2 of the S.W. 1/4 of Sec. 2.

Beginning at the 1/16 corner of in the center of the N.W. 1/4 of Sec 2. I find a stake set by Mr. Cain, the parties having failed to set a rock as they had been let off by Mr. Cain to do. I replace Cain's stake, (which Al Tompkins and S. Bolinger identify and agree is satisfactory) with a Rock 4 x 10 x 12 in. and mark

A. Laurel 36 in N. 78° W. 58 lks.
" Pine 36 " S. 59° E. 45 "

Thence S. 00° 34' E. 61.49 Intersect Section line 46 lks East of 1/16 corner.

True line N. 00° 08' E. 61.49 to 1/16 corner in N.W. 1/4.

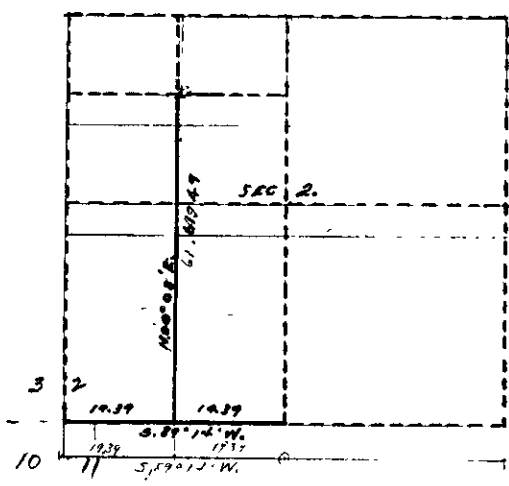
To locate 1/16 corner on South boundary of Sec 2. I began at the corner to Secs 2, 3, 10 & 11. Find three trees standing, willows called for in Original notes gone. Renew corner with Rock 6 x 8 x 12 inches.

Thence (East, needle reading later S 89° 45' E.)
38.78 intersect 77 lks South of 1/4 corner, both trees still O.K. Renew corner with a Yew Wood post.

Course S. 89° 14' W. 19.39 Set quarter post.
and Marks.

A. Pine 24 in S. 36° E. 03 lks.
" Fir 10 " N. 30 1/2° W. 40 "

F. J. Cole Deputy Surveyor.



Solar Computation

July 24, 1915 Lat 42° 59', Hr. Ch. 30.79"
Dec. 4 - A.M.
+ 20° 03' 12.9"
- 04' 52.0"

19° 58' 20.4" + Ref 28" =
Solar Setting 19° 58' 48"

30.79 x 9.62 = 292.5
292.5 ÷ 60 = 4' 52.5"