

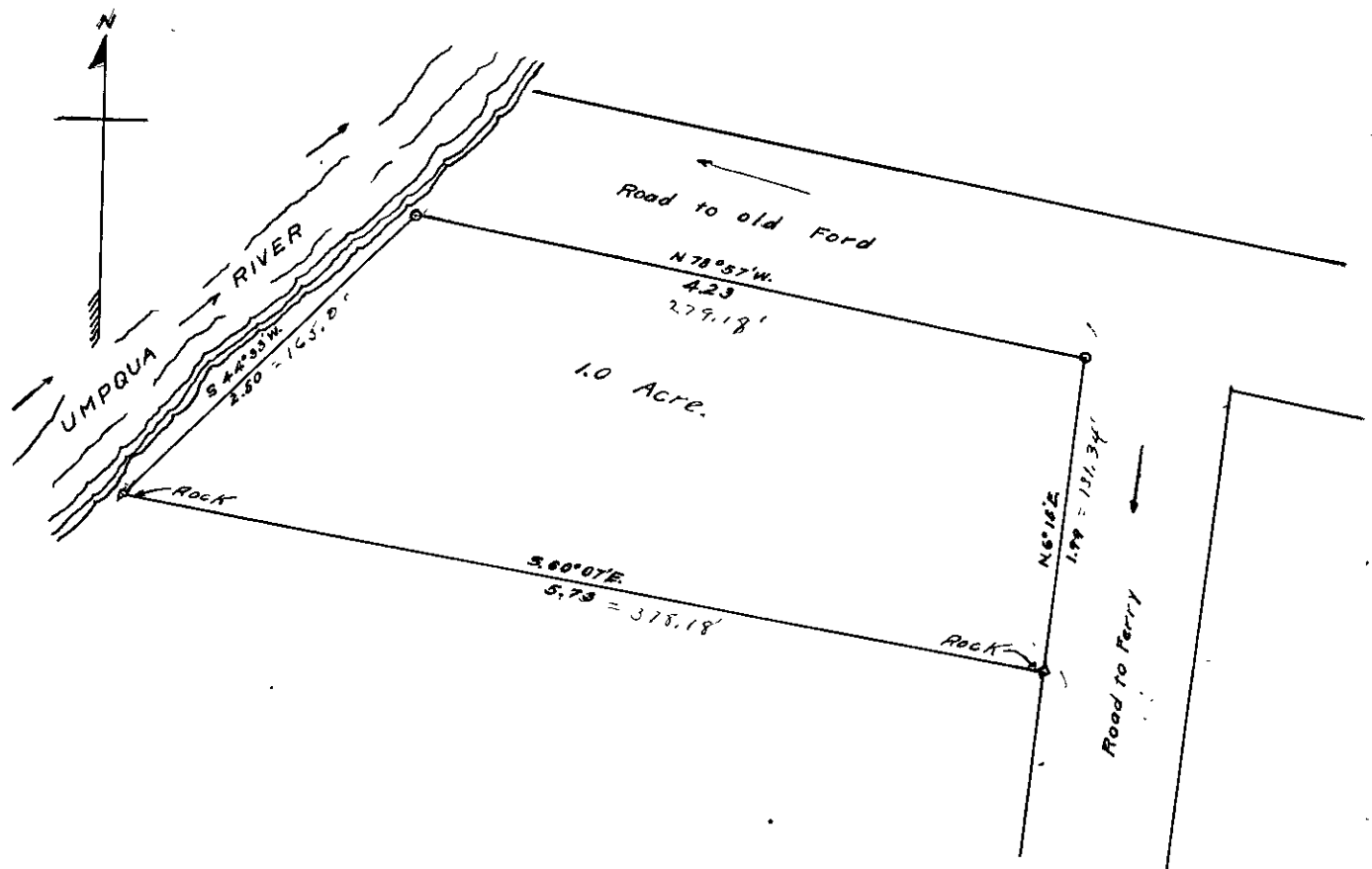
County Surveyor's Record, Douglas County, Oregon

Survey No.

Made for *M. M. Vanhorn*

T. 28 S. R. 6 W. To cut one acre off from the north side of Lot 43.
 April 9th. 1915 Plat H. of the Roelberg Home Orchards Tracts.

Field Book 18-378
 Page 26 26



I began at the Original Stake set at the N.E. corner of Lot 43. Thence following the fence on North boundary N 78° 57' W. 4.23 chains to the river bank. Thence S 44° 33' W. 2.50 chains, I buried 3 river boulders for corner; Thence from the N.E. corner of Lot 43. I ran S 60° 15' W. 1.99 chains, and buried a sandstone 6x8x10 inches in the fence line for S.E. corner.