

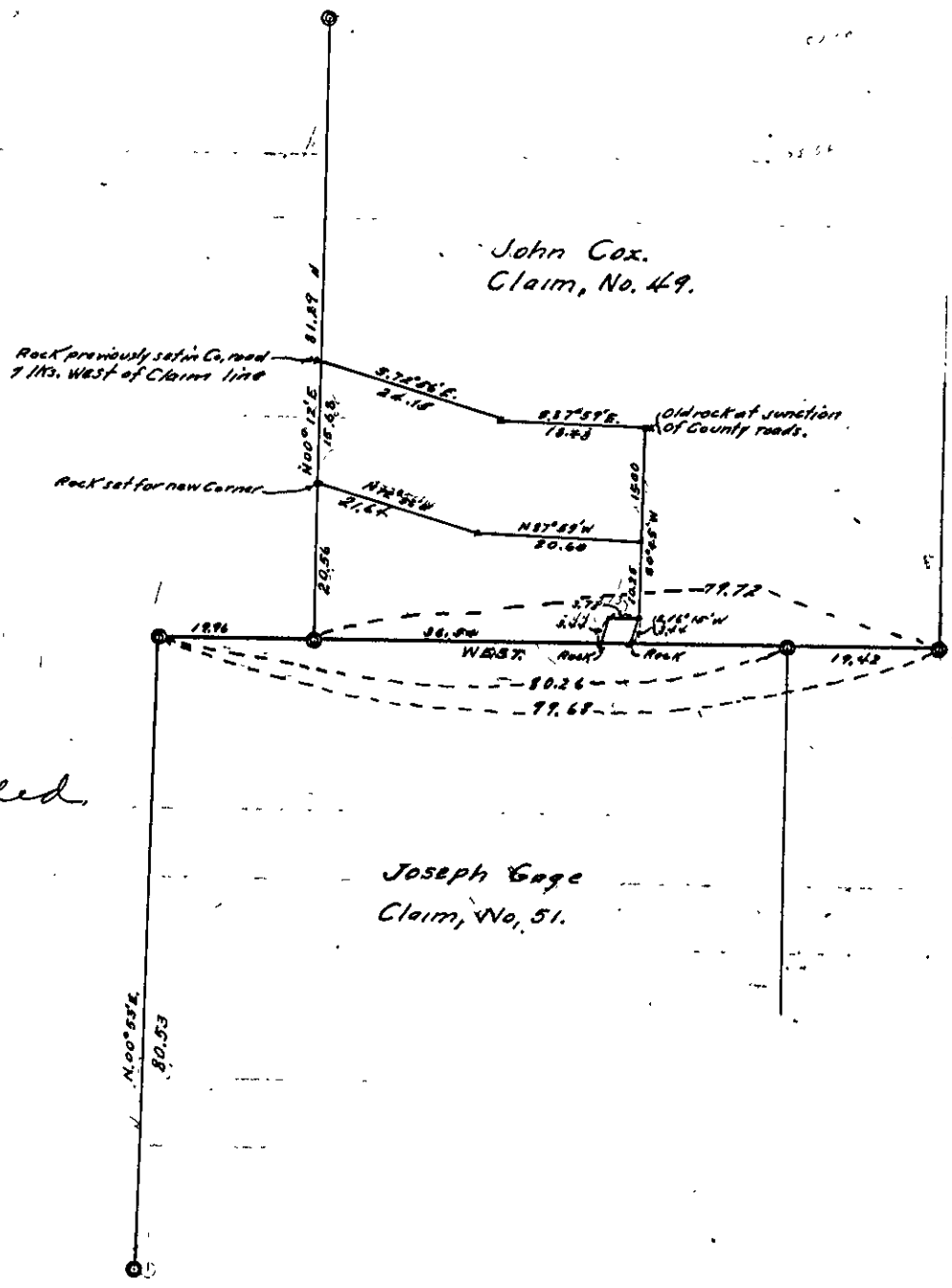
County Surveyor's Record, Douglas County, Oregon

Survey No.

Made for *C. M. Bunnell, C. F. Anderson & A. S. Fry*

*Plat No. 610.
April 5, 1915.*

To relocate the S.W. corner of the John Cox Claim No 49. To locate the line between C. F. Anderson and A. S. Fry, and to locate C. M. Bunnell's one acre tract.



*Field Bk. 18=37
Page 17.*

corners Recorded.

Cor recorded

From the S.E. corner of Claim 49 I took a Solar bearing and run a transit line well, which crossed the present fence at many places.

19.42

Intersect present fence line on the east of C 51. find a tree to correspond to call for tree on Southside of East and West line, as C. E. Roberts ignored this tree because no scribe marks were visible after blaze had been chopped out, and Nicholas wished to abide by Mr Roberts work. I do not consider this tree. If tree were considered my line would intersect 18. lbs north of corner. Cross fence on west line of C 49, 3 lbs north of present corner of fence.

79.74