

Survey No

Made for H. R. Parks, Letson & Morris

March 3, 1915
T.S.S.R. & W.

To locate the lines shown on sketch,
Marked with distances and bearings.

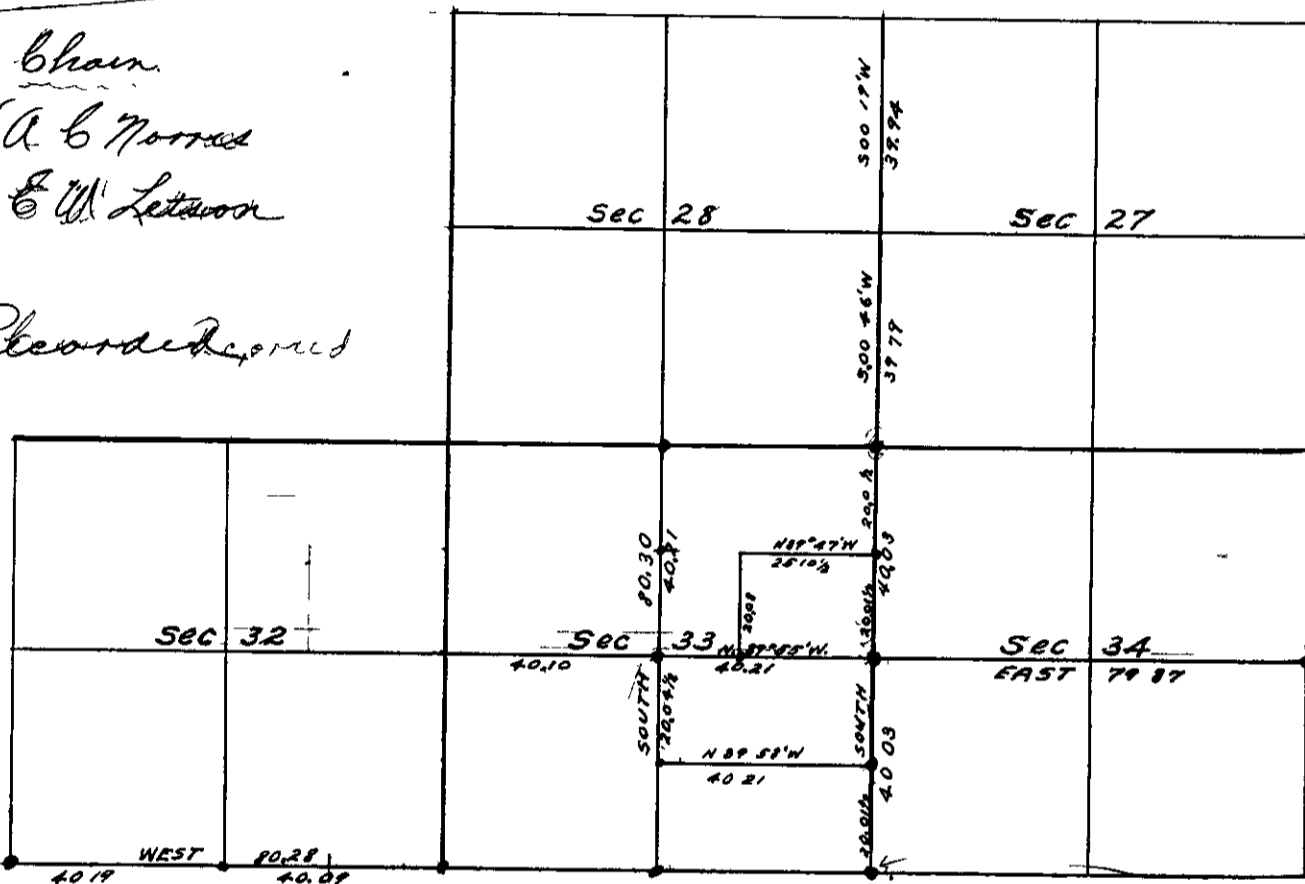
Field bk No 14
pages 14-15
19, 20
22, 23

New B. k. 240

Chain

A. B. Morris
E. W. Letson

Corners Re-established



Beginning at the corner to Secs 27, 28, 33 & 34
I ran South 8006 to Top line. Set corner in
place from the tree standing in Sec 34
The other three original trees are uprooted but
in good condition. I marked new trees

a Cedar 16 in	S. 51° 15' W	19 lks.
Fir 18	N 25° 50' W	55 "
Double Maple 14	S 75° 45' E	55 "

North from Sec cor recet.

20 01 1/2	Set 1/6 corner and mark
a Fir 20 in	N 15° E. 22 lks
10	S. 6° 15' W. 15 "

40.23 Set fr. corner, as original could not
be located, and mark
a Maple 24 in S. 74 1/2° W. 83 lks