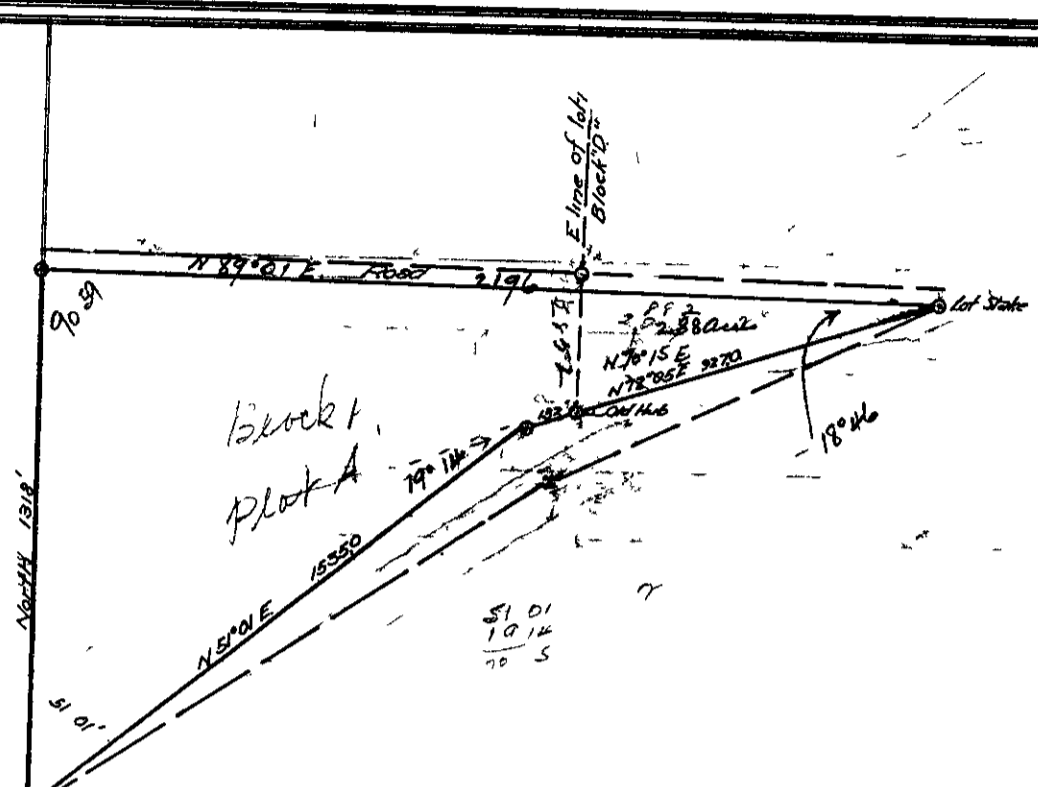


County Surveyor's Record, Douglas County, Oregon

Survey No

Made for *W F Kernum*



Point designated by Kernum as the SW corner of lot 1 Block B of Umpqua Park

Survey for the purpose of determining the South boundary of lot 1 Block "B" in Umpqua Park
 There being no evidence on the ground of the South boundary being located as shown on the map, I began at the End of lot 1 Block "B" and extend a line over a ^{old} hub which is on a North and South line coinciding with the E line of lot 1 Block "D" and make the distance as near as can be scaled from the Recorded map of Umpqua Park Making this course S 72° 05' E 10 59 ft Thence S 51° 01' W 1535 ft to a point designated by W F Kernum as the point where the original S W Corner of Lot 1 Block "B" of Umpqua Park had been placed The distance to the N W Cor of lot 1 then was 1318 ft instead of 1270 as shown on the recorded map but as the S W Corner falls at the bottom of a rocky bluff and a point 1270 ft South of the N W Cor falls out of the bluff I decided that the point designated by W F Kernum to be nearer correct

FB 1873 37 18
 Page 13 13
 FB 1874 40 14
 Page 37 37