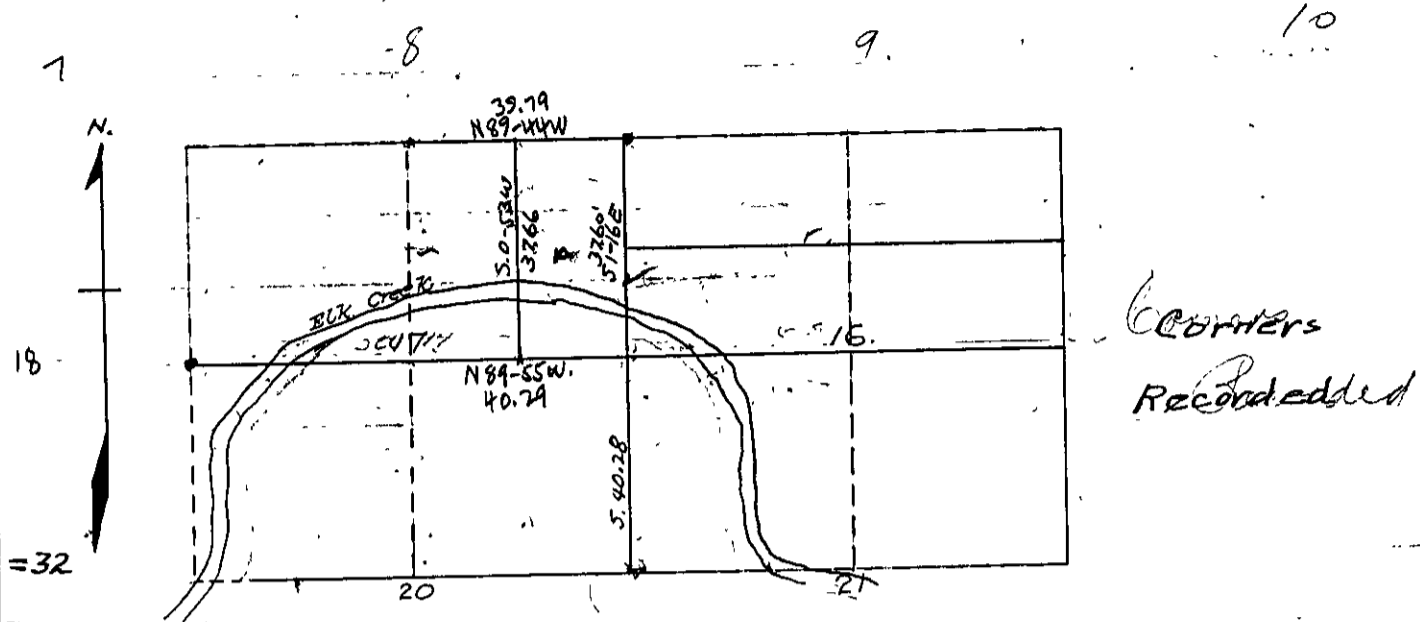


S 22.87 70.
June 6, 1913.



Field book M 172 = 32
page 172-28, 29.

Survey to determine the South & West boundaries of the E 1/2 of N 1/4 of Sec. 17, also the Sec. line bet. Secs. 16 & 17, also the 1/4 line through Sec 16, and the 1/4 line East and West through the N 1/2 of Sec. 17.

Beginning at the corner of Secs. 8-9-16-17. N 89° 44' W.

39.79

1/4 Cor. which I renew from original tree. Return and set 1/4 corner on line and in correct place. From corner to Sec 8-9-16-17.

37.60

S 1° 16' E 37.60
1/4 Cor. as set by Frank Cain from original trees. Thence South.

40.28

Sec. Cor. 16-17-20-21 stake renewed and tree marked by M B. Sturmond.

40.27

From 1/4 Cor. bet. Secs 16-17. N 89° 55' W.
1/4 post set and tree marked by Frank Cain. I return and set 1/4 corner in correct place. Then I began at the 1/4 Cor west of Sec Cor. to 8-9-16-17. Thence S 0° 33' E.

37.66

1/4 Cor. West of 1/4 Cor bet. Secs 16 & 17. From the corner to Secs 9-15-16-17 which I establish from the original tree. Thence S 0° 06' W.

71.21

Cor. Secs 16-20-21-22. where I find three of the original trees. Then I return and set 1/4 Cor. at 39.61 on true line and mark. A 24" iron pipe 1/4" dia. N 10° E 1/4 Sec 16-17.